

Human MBL2/Mannan Binding Lectin Protein



Cat. No. MBL-HM102

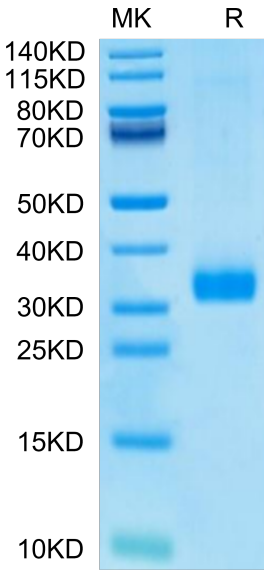
Description	
Source	Recombinant Human MBL2/Mannan Binding Lectin Protein is expressed from HEK293 with His tag at the C-Terminus. It contains Glu21-Ile248.
Accession	P11226
Molecular Weight	The protein has a predicted MW of 25.11 kDa. Due to glycosylation, the protein migrates to 30-40 kDa based on Bis-Tris PAGE result.
Endotoxin	Less than 1 EU per µg by the LAL method.
Purity	> 95% as determined by Bis-Tris PAGE

Formulation and Storage	
Formulation	Lyophilized from 0.22µm filtered solution in PBS (pH 7.4). Normally 8% trehalose is added as protectant before lyophilization.
Reconstitution	Dissolve the lyophilized protein in distilled water. Please refer to the Certificate of Analysis for detailed instructions.
Storage	-20 to -80°C for 12 months as supplied from date of receipt.-80°C for 3 months after reconstitution.Recommend to aliquot the protein into smaller quantities for optimal storage. Please minimize freeze-thaw cycles.

Background	
Mannan-binding lectin (MBL) is a vital element in the host innate immune system, which is primarily produced by the liver and secreted into the circulation.It is present in serum and may bind to a plethora of microbial pathogens and mediate opsonization of these by complement-dependent and/or independent mechanisms.	

Assay Data

Bis-Tris PAGE



Human MBL2 on Bis-Tris PAGE under reduced condition. The purity is greater than 95%.