

Biotinylated Human MCP-1/CCL2 Protein



Cat. No. MCP-HM401B

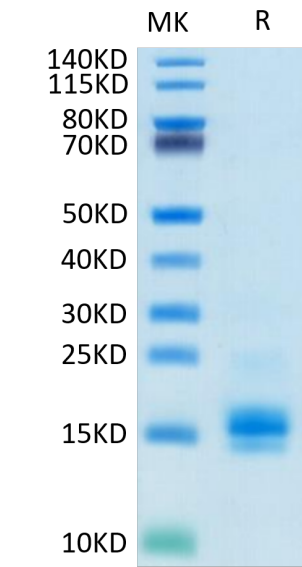
Description	
Source	Recombinant Biotinylated Human MCP-1/CCL2 Protein is expressed from HEK293 with His tag and Avi tag at the C-Terminus. It contains Gln24-Thr99.
Accession	P13500
Molecular Weight	The protein has a predicted MW of 11.5 kDa. Due to glycosylation, the protein migrates to 15-20 kDa based on Bis-Tris PAGE result.
Endotoxin	Less than 1 EU per µg by the LAL method.
Purity	> 95% as determined by Bis-Tris PAGE > 95% as determined by HPLC

Formulation and Storage	
Formulation	Lyophilized from 0.22µm filtered solution in PBS (pH 7.4). Normally 8% trehalose is added as protectant before lyophilization.
Reconstitution	Dissolve the lyophilized protein in distilled water. Please refer to the Certificate of Analysis for detailed instructions.
Storage	-20 to -80°C for 12 months as supplied from date of receipt. -80°C for 3 months after reconstitution. Recommend to aliquot the protein into smaller quantities for optimal storage. Please minimize freeze-thaw cycles.

Background	
Monocyte chemotactic protein-1 (MCP-1) (also referred to as chemokine (C-C motif) ligand 2 (CCL2) is expressed by mainly inflammatory cells and endothelial cells. MCP-1 has been reported to play an important role in the pathogenesis of atherosclerosis and considerable evidence supports that the monocyte containing MCPs and macrophage influences the growth of other cell types within the atherosclerotic lesion. This review will focus on the general structure features of MCP-1 and its role in atherosclerosis.	

Assay Data

Bis-Tris PAGE



Biotinylated Human MCP-1 on Bis-Tris PAGE under reduced condition. The purity is greater than 95%.

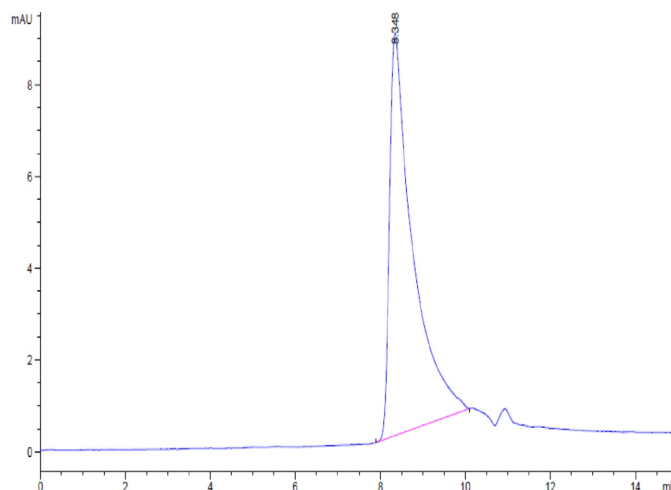
SEC-HPLC

## Biotinylated Human MCP-1/CCL2 Protein

Cat. No. MCP-HM401B



### Assay Data



The purity of Biotinylated Human MCP-1 is greater than 95% as determined by SEC-HPLC.