

Human HGF R/c-MET Protein



Cat. No. MET-HM401

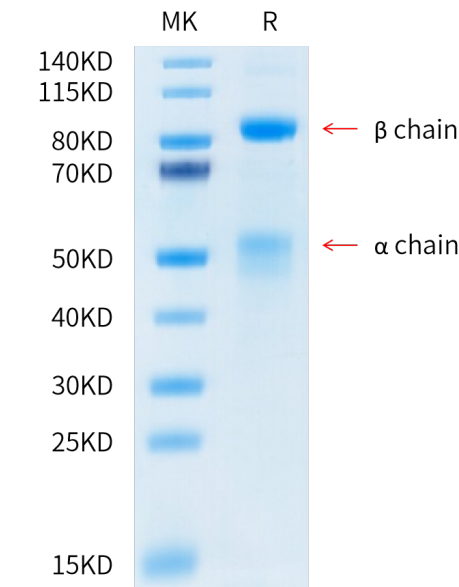
Description	
Source	Recombinant Human HGF R/c-MET Protein is expressed from HEK293 with His tag and Avi tag at the C-Terminus It contains Glu25-Thr932.
Accession	P08581-1
Molecular Weight	The mature form of HGF R is a heterodimer which can be cleaved into $\alpha$ and $\beta$ chain. The protein has a predicted MW of 32.5 kDa ( $\alpha$ chain) and 72.1 kDa ( $\beta$ chain). Due to glycosylation, the protein migrates to 45-60 kDa ( $\alpha$ subunit) and 80-100 kDa ( $\beta$ subunit) based on Bis-Tris PAGE result.
Endotoxin	Less than 1 EU per $\mu$ g by the LAL method.
Purity	> 95% as determined by Bis-Tris PAGE > 95% as determined by HPLC

Formulation and Storage	
Formulation	Lyophilized from 0.22 $\mu$ m filtered solution in PBS (pH 7.4). Normally 8% trehalose is added as protectant before lyophilization.
Reconstitution	Dissolve the lyophilized protein in distilled water. Please refer to the Certificate of Analysis for detailed instructions.
Storage	-20 to -80°C for 12 months as supplied from date of receipt. -80°C for 3 months after reconstitution. Recommend to aliquot the protein into smaller quantities for optimal storage. Please minimize freeze-thaw cycles.

Background	
c-Met, also called tyrosine-protein kinase Met or hepatocyte growth factor receptor (HGFR), is a protein that in humans is encoded by the MET gene. The protein possesses tyrosine kinase activity. The primary single chain precursor protein is post-translationally cleaved to produce the alpha and beta subunits, which are disulfide linked to form the mature receptor. Following activation by ligand, interacts with the PI3-kinase subunit PIK3R1, PLCG1, SRC, GRB2, STAT3 or the adapter GAB1.	

Assay Data

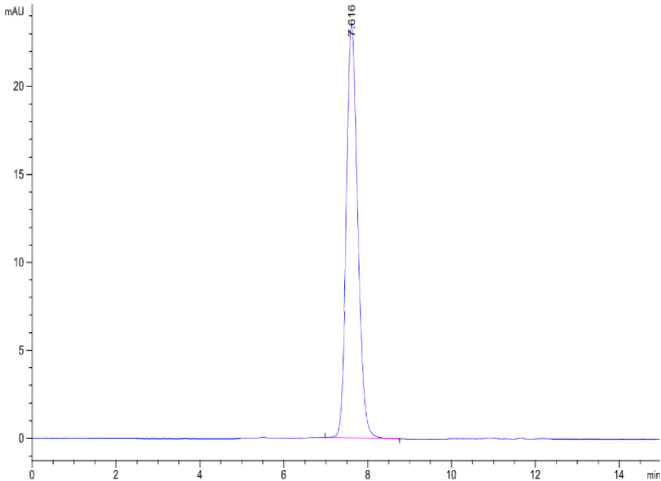
Bis-Tris PAGE



Human HGF R on Bis-Tris PAGE under reduced condition. The purity is greater than 95%.

SEC-HPLC

Assay Data

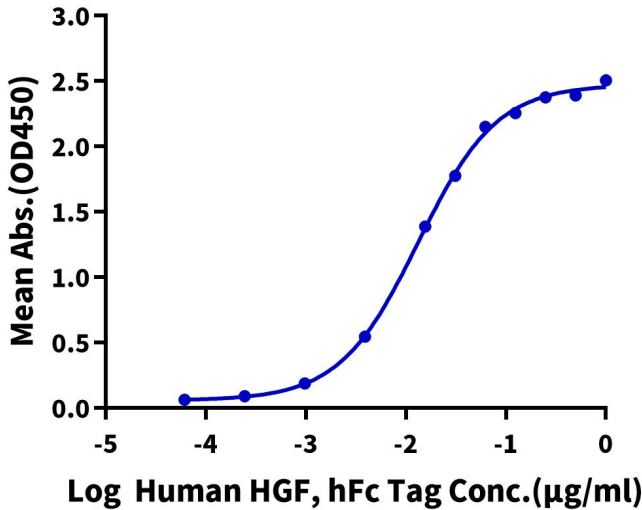


The purity of Human HGF R is greater than 95% as determined by SEC-HPLC.

ELISA Data

Human HGF R, His Tag ELISA

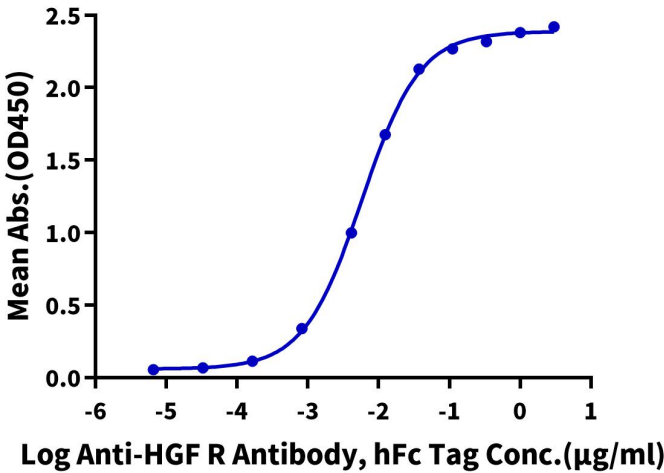
0.2µg Human HGF R, His Tag Per Well



Immobilized Human HGF R, His Tag at 2 µg/ml (100 µl/Well). Dose response curve for Human HGF, hFc Tag with the EC50 of 13.3 ng/ml determined by ELISA (QC test).

Human HGF R, His Tag ELISA

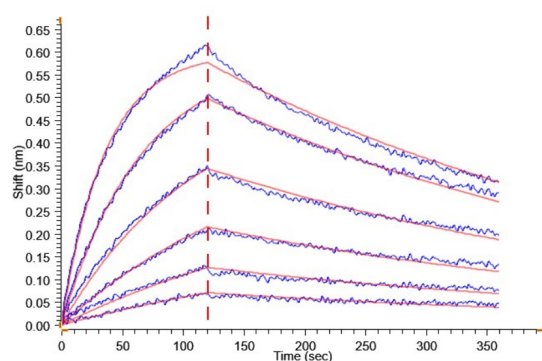
0.5µg Human HGF R, His Tag Per Well



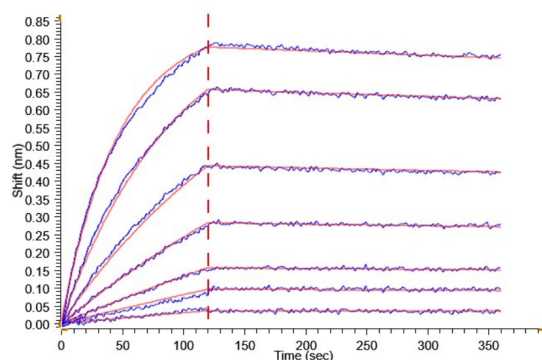
Immobilized Human HGF R, His Tag at 5 µg/ml (100 µl/Well) on the plate. Dose response curve for Anti-HGF R Antibody, hFc Tag with the EC50 of 5.8 ng/ml determined by ELISA.

## Assay Data

## BLI Data



Loaded Human HGF, hFc Tag on ProA-Biosensor, can bind Human HGF R, His-Avi Tag with an affinity constant of 9.93 nM as determined in BLI assay (Gator® Prime).



Loaded Anti-HGF R Antibody, hFc Tag on ProA-Biosensor, can bind Human HGF R, His-Avi Tag with an affinity constant of 0.79 nM as determined in BLI assay (Gator® Prime).