

# Mouse HGF R/c-MET Protein

Cat. No. MET-MM101



## Description

Source	Recombinant Mouse HGF R/c-MET Protein is expressed from HEK293 with His tag at the C-terminus.
	It contains Glu25-Ala931.
Accession	P16056
Molecular Weight	The mature form of HGF R is a heterodimer which can be cleaved into $\alpha$ and $\beta$ chain. The protein has a predicted MW of 32.1 kDa ( $\alpha$ chain) and 69.8 kDa ( $\beta$ chain). Due to glycosylation, the protein migrates to 40-50 kDa ( $\alpha$ subunit) and 78-98 kDa ( $\beta$ subunit) based on Bis-Tris PAGE result.
Endotoxin	Less than 1 EU per $\mu$ g by the LAL method.
Purity	> 95% as determined by Bis-Tris PAGE
	> 95% as determined by HPLC

## Formulation and Storage

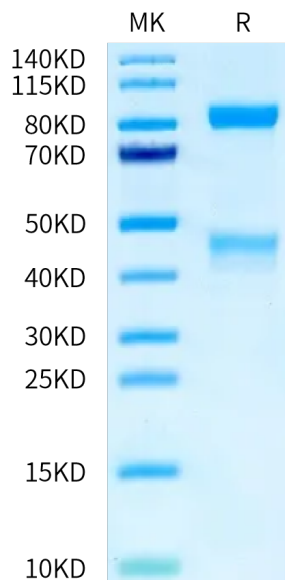
Formulation	Lyophilized from 0.22 $\mu$ m filtered solution in PBS (pH 7.4). Normally 8% trehalose is added as protectant before lyophilization.
Reconstitution	Dissolve the lyophilized protein in distilled water. Please refer to the Certificate of Analysis for detailed instructions.
Storage	-20 to -80°C for 12 months as supplied from date of receipt. -80°C for 3 months after reconstitution. Recommend to aliquot the protein into smaller quantities for optimal storage. Please minimize freeze-thaw cycles.

## Background

c-Met, also called tyrosine-protein kinase Met or hepatocyte growth factor receptor (HGFR), is a protein that in humans is encoded by the MET gene. The protein possesses tyrosine kinase activity. The primary single chain precursor protein is post-translationally cleaved to produce the alpha and beta subunits, which are disulfide linked to form the mature receptor. Following activation by ligand, interacts with the PI3-kinase subunit PIK3R1, PLCG1, SRC, GRB2, STAT3 or the adapter GAB1.

## Assay Data

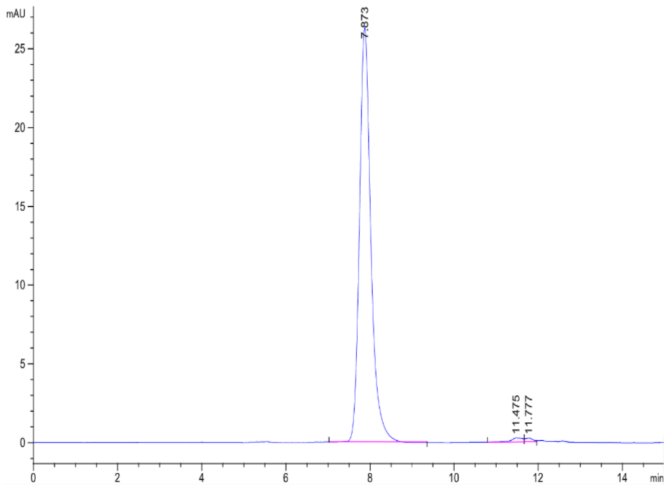
### Bis-Tris PAGE



Mouse HGF R on Bis-Tris PAGE under reduced condition. The purity is greater than 95%.

### SEC-HPLC

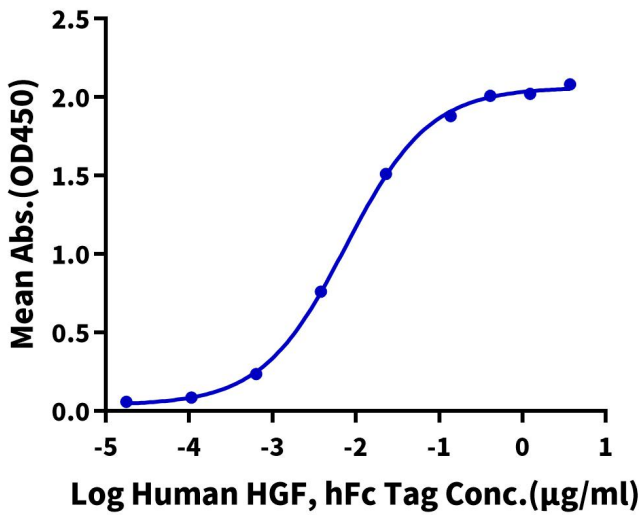
Assay Data



The purity of Mouse HGF R is greater than 95% as determined by SEC-HPLC.

ELISA Data

**Mouse HGF R, His Tag ELISA**  
0.1µg Mouse HGF R, His Tag Per Well



Immobilized Mouse HGF R, His Tag at 1µg/ml (100µl/well) on the plate. Dose response curve for Human HGF, hFc Tag with the EC50 of 7.6ng/ml determined by ELISA.