

Biotinylated Human HLA-A\*11:01&B2M&KRAS WT (VVVGAGGVGK) Monomer Protein



Cat. No. MHC-HE001B

Description	
Source	Recombinant Biotinylated Human HLA-A*11:01&B2M&KRAS WT (VVVGAGGVGK) Monomer Protein is expressed from E.coli with His tag and Avi tag at the C-Terminus. It contains Gly25-Thr305(HLA-A*11:01), Ile21-Met119(B2M) and VVVGAGGVGK peptide.
Accession	AAV53343.1(HLA-A*11:01)&P61769(B2M)&VVVGAGGVGK
Molecular Weight	The protein has a predicted MW of 35.36 kDa (HLA-A*11:01) and 11.9 kDa (B2M) same as Bis-Tris PAGE result.
Endotoxin	Less than 1 EU per µg by the LAL method.
Purity	> 95% as determined by Bis-Tris PAGE > 95% as determined by HPLC

Formulation and Storage	
Formulation	Lyophilized from 0.22 µm filtered solution in PBS (pH 7.4). Normally 8% trehalose is added as protectant before lyophilization.
Reconstitution	Dissolve the lyophilized protein in distilled water. Please refer to the Certificate of Analysis for detailed instructions.
Storage	-20 to -80°C for 12 months as supplied from date of receipt. -80°C for 3 months after reconstitution. Recommend to aliquot the protein into smaller quantities for optimal storage. Please minimize freeze-thaw cycles.

Background	
Kirsten rat sarcoma 2 viral oncogene homolog (KRAS) is the most commonly mutated oncogene in human cancer. The developments of many cancers depend on sustained expression and signaling of KRAS, which makes KRAS a high-priority therapeutic target.	

Assay Data

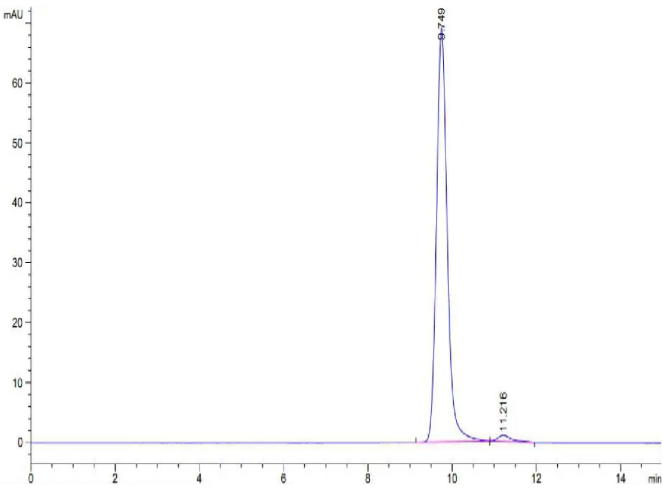
Bis-Tris PAGE



Biotinylated Human HLA-A\*11:01&B2M&KRAS WT (VVVGAGGVGK) Monomer on Bis-Tris PAGE under reduced condition. The purity is greater than 95%.

SEC-HPLC

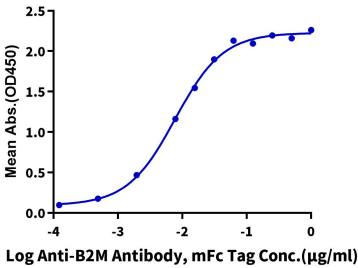
Assay Data



The purity of Biotinylated Human HLA-A\*11:01&B2M&KRAS WT (VVVGAGGVGK) Monomer is greater than 95% as determined by SEC-HPLC.

ELISA Data

**Biotinylated Human HLA-A\*11:01&B2M&KRAS WT (VVVGAGGVGK) Monomer, His Tag ELISA**  
0.05µg Biotinylated Human HLA-A\*11:01&B2M&KRAS WT (VVVGAGGVGK) Monomer, His Tag Per Well



Immobilized Biotinylated Human HLA-A\*11:01&B2M&KRAS WT (VVVGAGGVGK) Monomer, His Tag at 0.5µg/ml (100µl/Well) on streptavidin (5µg/ml) precoated plate. Dose response curve for Anti-B2M Antibody, mFc Tag with the EC50 of 7.7ng/ml determined by ELISA (QC Test).