

Cat. No. MHC-HE002B

Description	
Source	Recombinant Biotinylated Human HLA-A*11:01&B2M&KRAS WT (VVGAGGVGK) Monomer Protein is expressed from E.coli with His tag and Avi tag at the C-Terminus. It contains Gly25-Thr305 (HLA-A*11:01), Ile21-Met119 (B2M) and VVGAGGVGK peptide.
Accession	AAV53343.1 (HLA-A*11:01)&P61769 (B2M)&VVGAGGVGK
Molecular Weight	The protein has a predicted MW of 35.36 kDa (HLA-A*11:01) and 11.9 kDa (B2M) same as Bis-Tris PAGE result.
Endotoxin	Less than 1 EU per µg by the LAL method.
Purity	> 95% as determined by Bis-Tris PAGE > 95% as determined by HPLC

Formulation and Storage	
Formulation	Supplied as 0.22 µm filtered solution in 20 mM Tris, 200 mM NaCl (pH 8.0).
Storage	Valid for 12 months from date of receipt when stored at -80°C. Recommend to aliquot the protein into smaller quantities for optimal storage. Please minimize freeze-thaw cycles.

Background	
Kirsten rat sarcoma 2 viral oncogene homolog (KRAS) is the most commonly mutated oncogene in human cancer. The developments of many cancers depend on sustained expression and signaling of KRAS, which makes KRAS a high-priority therapeutic target.	

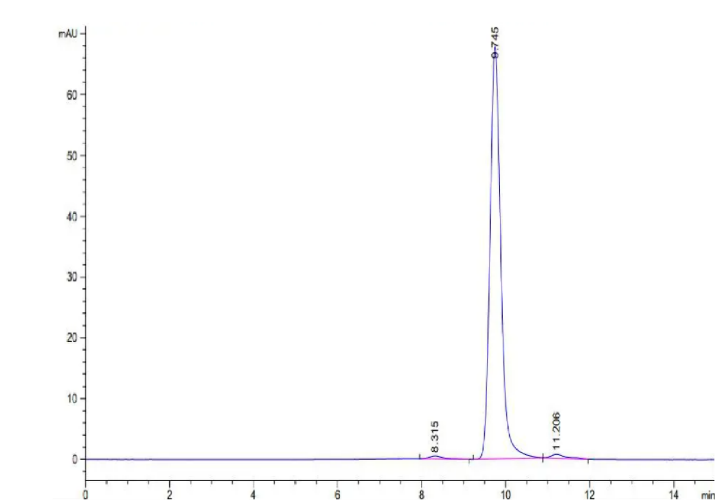
Assay Data

Bis-Tris PAGE



Biotinylated Human HLA-A*11:01&B2M&KRAS WT (VVGAGGVGK) Monomer on Bis-Tris PAGE under reduced condition. The purity is greater than 95%.

SEC-HPLC



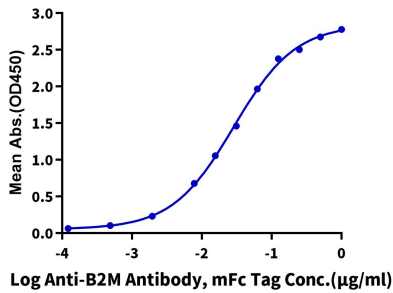
The purity of Biotinylated Human HLA-A*11:01&B2M&KRAS WT (VVGAGGVGK) Monomer is greater than 95% as determined by SEC-HPLC.

Cat. No. MHC-HE002B

Assay Data

ELISA Data

Biotinylated Human HLA-A*11:01&B2M&KRAS WT (VVGAGGVGK), His-Avi Tag ELISA
0.1µg Biotinylated Human HLA-A*11:01&B2M&KRAS WT (VVGAGGVGK), His-Avi Tag Per Well



Immobilized Biotinylated Human HLA-A*11:01&B2M&KRAS WT (VVGAGGVGK) Monomer, His-Avi Tag at 1 µg/ml (100 µl/Well) on streptavidin(5 µg/ml) precoated plate. Dose response curve for Anti-B2M Antibody, mFc Tag with the EC50 of 28.6 ng/ml determined by ELISA (QC Test).