

Human HLA-A*02:01&B2M&WT-1 (RMFPNAPYL) Monomer Protein

Cat. No. MHC-HE010

Description

Source	Recombinant Human HLA-A*02:01&B2M&WT-1 (RMFPNAPYL) Monomer Protein is expressed from E.coli with His tag and Avi tag at the C-terminus.
	It contains Gly25-Thr305 (HLA-A*02:01), Ile21-Met119 (B2M) and RMFPNAPYL peptide.
Accession	A0A140T913(HLA-A*02:01)&P61769(B2M)&RMFPNAPYL
Molecular Weight	The protein has a predicted MW of 35.6 kDa (HLA-A*02:01) and 11.9 kDa (B2M) same as Bis-Tris PAGE result.
Endotoxin	Less than 1 EU per µg by the LAL method.
Purity	> 95% as determined by Bis-Tris PAGE
	> 95% as determined by HPLC

Formulation and Storage

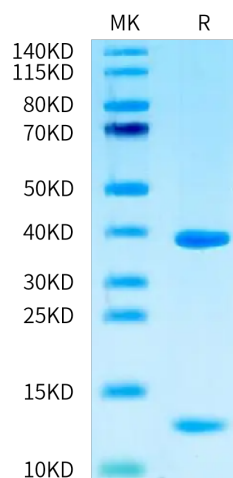
Formulation	Supplied as 0.22 µm filtered solution in 20mM Tris, 200mM NaCl (pH 8.0).
Storage	Valid for 12 months from date of receipt when stored at -80°C. Recommend to aliquot the protein into smaller quantities for optimal storage. Please minimize freeze-thaw cycles.

Background

The WT1 protein plays a role in cell growth, the process by which cells mature to perform specific functions (differentiation), and the self-destruction of cells (apoptosis). WT1 is differentially expressed in serous, endometrioid, clear cell, and mucinous carcinomas of the peritoneum, fallopian tube, ovary, and endometrium. The Human HLA-A*0201 WT-1 (RMFPNAPYL) complex Protein is a complex of HLA-A*0201 of the MHC Class I, B2M and RMFPNAPYL peptide of the WT-1.

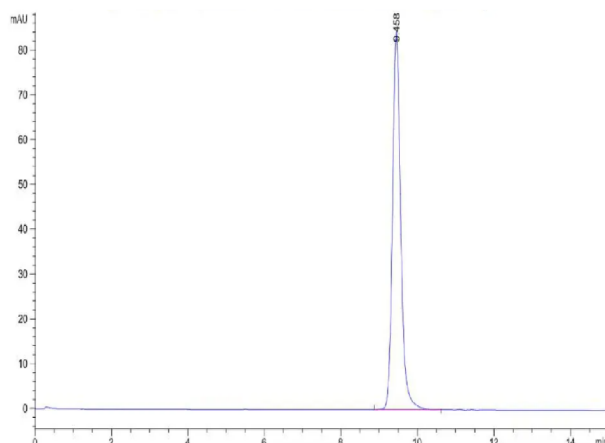
Assay Data

Bis-Tris PAGE



Human HLA-A*02:01&B2M&WT-1 (RMFPNAPYL) Monomer on Bis-Tris PAGE under reduced condition. The purity is greater than 95%.

SEC-HPLC



The purity of Human HLA-A*02:01&B2M&WT-1 (RMFPNAPYL) Monomer is greater than 95% as determined by SEC-HPLC.

Human HLA-A*02:01&B2M&WT-1 (RMFPNAPYL) Monomer Protein

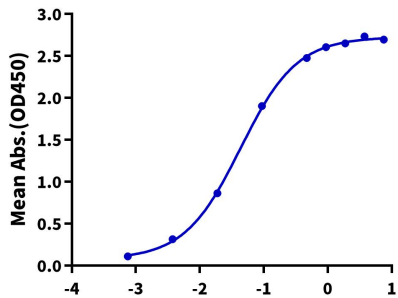


Cat. No. MHC-HE010

Assay Data

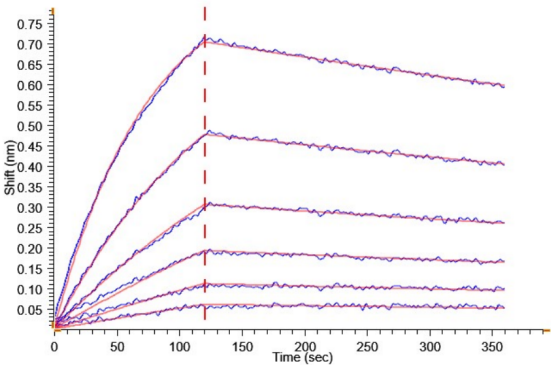
ELISA Data

Human HLA-A*02:01&B2M&WT-1 (RMFPNAPYL) Monomer, His Tag ELISA
0.5µg Human HLA-A*02:01&B2M&WT-1 (RMFPNAPYL) Monomer, His Tag Per Well



Immobilized Human HLA-A*02:01&B2M&WT-1 (RMFPNAPYL) Monomer, His Tag at 5µg/ml (100µl/well) on the plate. Dose response curve for Anti-HLA-A*02:01&B2M&WT-1 (RMFPNAPYL) Antibody, hFc Tag with the EC50 of 43.4ng/ml determined by ELISA.

BLI Data



Loaded Anti-HLA-A*02:01&B2M&WT-1 (RMFPNAPYL) Antibody, hFc-Avi Tag on ProA-Biosensor can bind Human HLA-A*02:01&B2M&WT-1 (RMFPNAPYL) Monomer, His Tag with an affinity constant of 53.70 nM as determined in BLI assay (Gator® Prime).