

Human HLA-A\*02:01&B2M&P53 R175H (HMTEVVRHC) Monomer Protein



Cat. No. MHC-HE011

Description	
Source	Recombinant Human HLA-A*02:01&B2M&P53 R175H (HMTEVVRHC) Monomer Protein is expressed from E.coli with His tag and Avi tag at the C-terminus. It contains Gly25-Thr305 (HLA-A*02:01), Ile21-Met119 (B2M) and HMTEVVRHC peptide.
Accession	A0A140T913(HLA-A*02:01)&P61769(B2M)&HMTEVVRHC
Molecular Weight	The protein has a predicted MW of 35.6 kDa (HLA-A*02:01) and 11.9 kDa (B2M) same as Bis-Tris PAGE result.
Endotoxin	Less than 1 EU per µg by the LAL method.
Purity	> 95% as determined by Bis-Tris PAGE > 95% as determined by HPLC

Formulation and Storage	
Formulation	Lyophilized from 0.22 µm filtered solution in 20mM Tris, 200mM NaCl (pH 8.0). Normally 8% mannitol is added as protectant before lyophilization.
Reconstitution	Dissolve the lyophilized protein in distilled water. Please refer to the Certificate of Analysis for detailed instructions.
Storage	-20 to -80°C for 12 months as supplied from date of receipt.-80°C for 3 months after reconstitution.Recommend to aliquot the protein into smaller quantities for optimal storage. Please minimize freeze-thaw cycles.

Background	
p53 is a tumor suppressor protein. Under stressful conditions, p53 tightly regulates cell growth by promoting apoptosis and DNA repair. When p53 becomes mutated, it loses its function, resulting in abnormal cell proliferation and tumor progression. Depending on the p53 mutation, it has been shown to form aggregates leading to negative gain of function of the protein.p53 mutant associated aggregation has been observed in several cancer tissues and has been shown to promote tumor growth.	

Assay Data

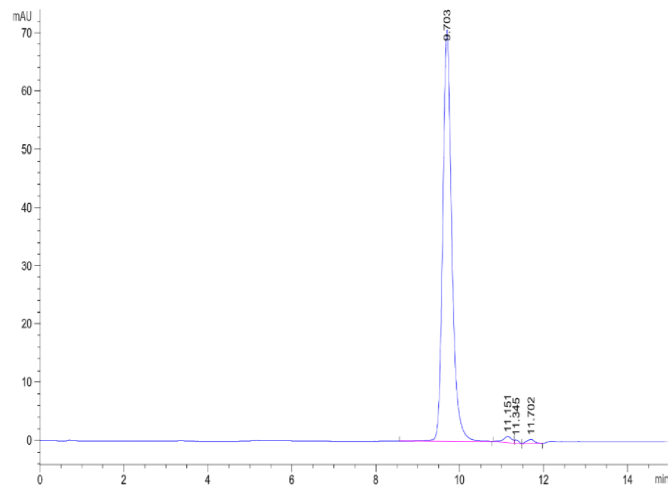
Bis-Tris PAGE



Human HLA-A\*02:01&B2M&P53 R175H (HMTEVVRHC) Monomer on Bis-Tris PAGE under reduced condition. The purity is greater than 95%.

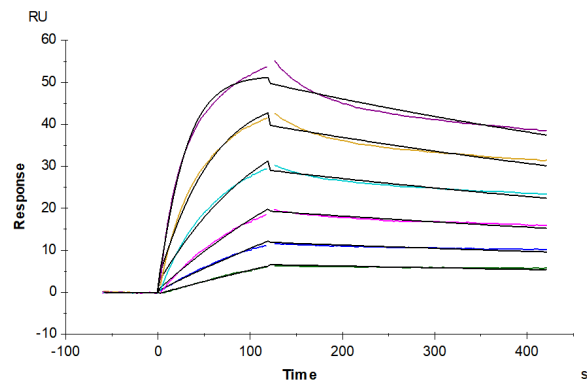
SEC-HPLC

Assay Data



The purity of Human HLA-A\*02:01&B2M&P53 R175H (HMTEVVRHC) Monomer is greater than 95% as determined by SEC-HPLC.

SPR Data



Human HLA-A\*02:01&B2M&P53 R175H (HMTEVVRHC) Monomer, His Tag captured on CM5 Chip via Anti-His Antibody can bind Anti-HLA-A\*02:01&B2M&P53 R175H (HMTEVVRHC) Antibody, hFc Tag with an affinity constant of 2.35 nM as determined in SPR assay (Biacore T200).