

Human HLA-A*02:01&B2M&AFP (FMNKFIYEI) Monomer Protein



Cat. No. MHC-HE017

Description	
Source	Recombinant Human HLA-A*02:01&B2M&AFP (FMNKFIYEI) Monomer Protein is expressed from E.coli with His tag and Avi tag at the C-terminus. It contains Gly25-Thr305(HLA-A*02:01), Ile21-Met119(B2M) and FMNKFIYEI peptide.
Accession	A0A140T913(HLA-A*02:01)&P61769(B2M)&FMNKFIYEI
Molecular Weight	The protein has a predicted MW of 35.6 kDa (HLA-A*02:01) and 11.9 kDa (B2M) same as Bis-Tris PAGE result.
Endotoxin	Less than 1 EU per µg by the LAL method.
Purity	> 95% as determined by Bis-Tris PAGE > 95% as determined by HPLC

Formulation and Storage	
Formulation	Supplied as 0.22 µm filtered solution in 20mM Tris, 200mM NaCl (pH 8.0).
Storage	Valid for 12 months from date of receipt when stored at -80°C. Recommend to aliquot the protein into smaller quantities for optimal storage. Please minimize freeze-thaw cycles.

Background	
Alpha-fetoprotein (AFP), a specific liver cancer marker, T cells expressing AFP-CAR selectively degranulated, released cytokines, and lysed liver cancer cells that were HLA-A*02:01 /AFP while sparing cells from multiple tissue types that were negative for either expressed proteins.CAR T-cell immunotherapy targeting intracellular/secreted solid tumor antigens can elicit a potent antitumor response.	

Assay Data

Bis-Tris PAGE



Human HLA-A*02:01&B2M&AFP (FMNKFIYEI) Monomer on Bis-Tris PAGE under reduced condition. The purity is greater than 95%.

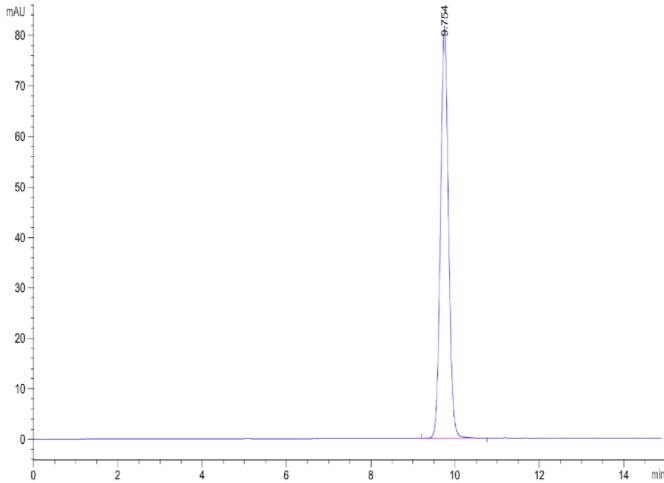
SEC-HPLC

Human HLA-A*02:01&B2M&AFP (FMNKFIYEI) Monomer Protein



Cat. No. MHC-HE017

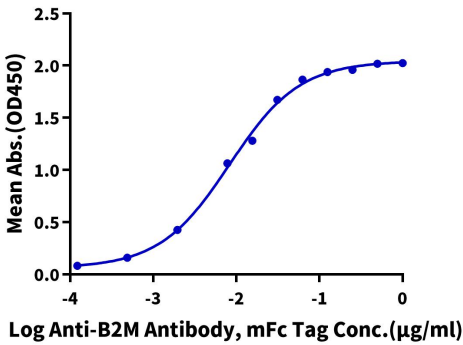
Assay Data



The purity of Human HLA-A*02:01&B2M&AFP (FMNKFIYEI) Monomer is greater than 95% as determined by SEC-HPLC.

ELISA Data

Human HLA-A*02:01&B2M&AFP (FMNKFIYEI) Monomer, His Tag ELISA
0.05µg Human HLA-A*02:01&B2M&AFP (FMNKFIYEI) Monomer, His Tag Per Well



Immobilized Human HLA-A*02:01&B2M&AFP (FMNKFIYEI) Monomer, His Tag at 0.5µg/ml (100µl/well) on the plate. Dose response curve for Anti-B2M Antibody, mFc Tag with the EC50 of 8.3ng/ml determined by ELISA.