

Human HLA-A*02:01&B2M&ARF (AAPGAPAAV) Monomer Protein



Cat. No. MHC-HE024

Description	
Source	Recombinant Human HLA-A*02:01&B2M&ARF (AAPGAPAAV) Monomer Protein is expressed from E.coli with His tag and Avi tag at the C-terminus. It contains Gly25-Thr305(HLA-A*02:01), Ile21-Met119(B2M) and AAPGAPAAV peptide.
Accession	A0A140T913(HLA-A*02:01)&P61769(B2M)&AAPGAPAAV
Molecular Weight	The protein has a predicted MW of 35.6 kDa (HLA-A*02:01) and 11.9 kDa (B2M) same as Bis-Tris PAGE result.
Endotoxin	Less than 1 EU per µg by the LAL method.
Purity	> 95% as determined by Bis-Tris PAGE > 95% as determined by HPLC

Formulation and Storage	
Formulation	Supplied as 0.22 µm filtered solution in 20 mM Tris, 200 mM NaCl (pH 8.0).
Storage	Valid for 12 months from date of receipt when stored at -80°C. Recommend to aliquot the protein into smaller quantities for optimal storage. Please minimize freeze-thaw cycles.

Background	
Auxin Response Factors (ARFs) are a family of plant-specific transcription factors that play crucial roles in regulating plant growth and development. ARFs bind to auxin response elements (AuxREs) in the promoters of auxin-responsive genes, where they activate or repress transcription. They also recruit a second family of transcription factors, the Aux/IAA repressors, which confer an auxin response to the genes.	

Assay Data

Bis-Tris PAGE



Human HLA-A*02:01&B2M&ARF (AAPGAPAAV) Monomer on Bis-Tris PAGE under reduced condition. The purity is greater than 95%.

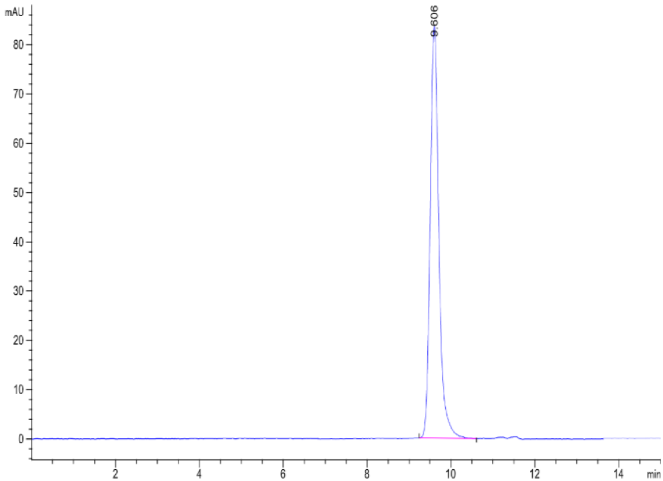
SEC-HPLC

Human HLA-A*02:01&B2M&ARF (AAPGAPAAV) Monomer Protein



Cat. No. MHC-HE024

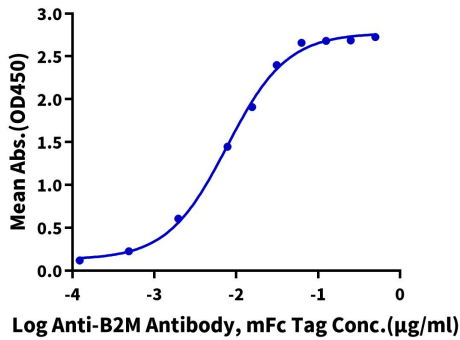
Assay Data



The purity of Human HLA-A*02:01&B2M&ARF (AAPGAPAAV) Monomer is greater than 95% as determined by SEC-HPLC.

ELISA Data

Human HLA-A*02:01&B2M&ARF (AAPGAPAAV) Monomer, His Tag ELISA
0.05µg Human HLA-A*02:01&B2M&ARF (AAPGAPAAV) Monomer, His Tag Per Well



Immobilized Human HLA-A*02:01&B2M&ARF (AAPGAPAAV) Monomer, His Tag at 0.5µg/ml (100µl/well) on the plate. Dose response curve for Anti-B2M Antibody, mFc Tag with the EC50 of 7.7ng/ml determined by ELISA.