

Biotinylated Human HLA-A*02:01&B2M&Influenza M1 (GILGFVFTL) Monomer Protein



Cat. No. MHC-HE038B

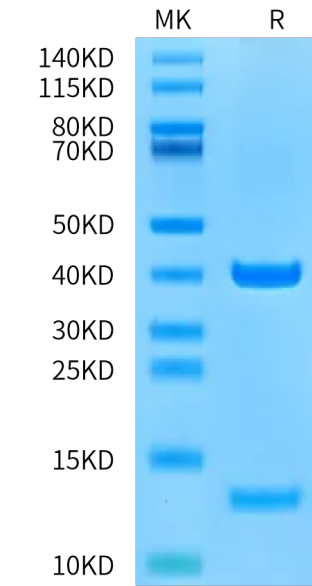
Description	
Source	Recombinant Biotinylated Human HLA-A*02:01&B2M&Influenza M1 (GILGFVFTL) Monomer Protein is expressed from E.coli with His tag and Avi tag at the C-terminus. It contains Gly25-Thr305(HLA-A*02:01), Ile21-Met119(B2M) and GILGFVFTL peptide.
Accession	A0A140T913(HLA-A*02:01)&P61769(B2M)&GILGFVFTL
Molecular Weight	The protein has a predicted MW of 35.6 kDa (HLA-A*02:01) and 11.9 kDa (B2M) same as Bis-Tris PAGE result.
Endotoxin	Less than 1 EU per µg by the LAL method.
Purity	> 95% as determined by Bis-Tris PAGE > 95% as determined by HPLC

Formulation and Storage	
Formulation	Supplied as 0.22 µm filtered solution in 20mM Tris, 200mM NaCl (pH 8.0).
Storage	Valid for 12 months from date of receipt when stored at -80°C. Recommend to aliquot the protein into smaller quantities for optimal storage. Please minimize freeze-thaw cycles.

Background	
Influenza A virus (IAV) is a respiratory pathogen that causes seasonal epidemics with significant mortality. One of the most abundant proteins in IAV particles is the matrix protein 1 (M1), which is essential for the virus structural stability. M1 organizes virion assembly and budding at the plasma membrane (PM), where it interacts with other viral components.	

Assay Data

Bis-Tris PAGE



Biotinylated Human HLA-A*02:01&B2M&Influenza M1 (GILGFVFTL) Monomer on Bis-Tris PAGE under reduced condition. The purity is greater than 95%.

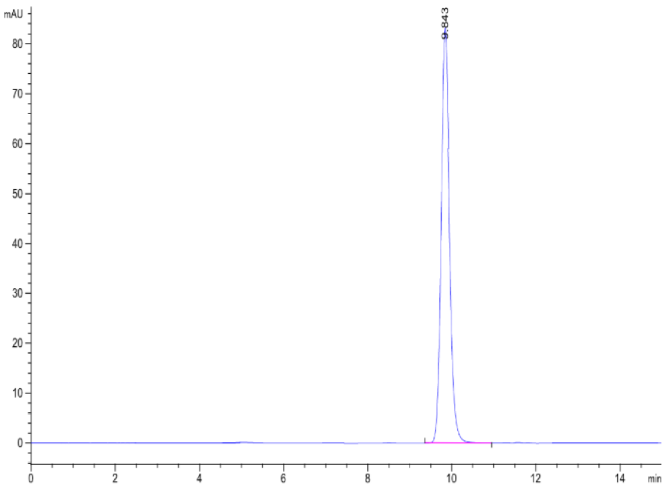
SEC-HPLC

Biotinylated Human HLA-A*02:01&B2M&Influenza M1 (GILGFVFTL) Monomer Protein



Cat. No. MHC-HE038B

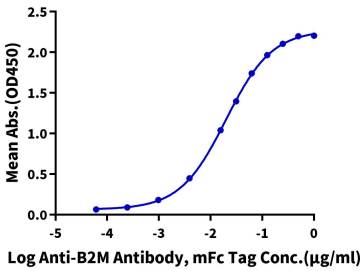
Assay Data



The purity of Biotinylated Human HLA-A*02:01&B2M&Influenza M1 (GILGFVFTL) Monomer is greater than 95% as determined by SEC-HPLC.

ELISA Data

Biotinylated Human HLA-A*02:01&B2M&Influenza M158-66(GILGFVFTL), His-Avi Tag ELISA
0.1µg Biotinylated Human HLA-A*02:01&B2M&Influenza M158-66 (GILGFVFTL), His-Avi Tag Per Well



Immobilized Biotinylated Human HLA-A*02:01&B2M&Influenza M158-66 (GILGFVFTL) Monomer, His Tag at 1µg/ml (100µl/well) on the streptavidin precoated plate (5µg/ml). Dose response curve for Anti-B2M Antibody, mFc Tag with the EC50 of 19.8ng/ml determined by ELISA..