

Human HLA-A\*02:01&B2M&Influenza M1 (GILGFVFTL) Monomer Protein



Cat. No. MHC-HE038

| Description      |  |
|------------------|--|
| Source           | Recombinant Human HLA-A*02:01&B2M&Influenza M1 (GILGFVFTL) Monomer Protein is expressed from E.coli with His tag and Avi tag at the C-terminus.<br>It contains Gly25-Thr305(HLA-A*02:01), Ile21-Met119(B2M) and GILGFVFTL peptide. |
| Accession        | A0A140T913(HLA-A*02:01)&P61769(B2M)&GILGFVFTL  |
| Molecular Weight | The protein has a predicted MW of 35.6 kDa (HLA-A*02:01) and 11.9 kDa (B2M) same as Bis-Tris PAGE result.  |
| Endotoxin        | Less than 1 EU per µg by the LAL method.   |
| Purity           | > 95% as determined by Bis-Tris PAGE<br>> 95% as determined by HPLC  |

| Formulation and Storage |  |
|-------------------------|--|
| Formulation             | Supplied as 0.22 µm filtered solution in 20mM Tris, 200mM NaCl (pH 8.0).   |
| Storage                 | Valid for 12 months from date of receipt when stored at -80°C. Recommend to aliquot the protein into smaller quantities for optimal storage. Please minimize freeze-thaw cycles. |

| Background   |  |
|--|--|
| Influenza A virus (IAV) is a respiratory pathogen that causes seasonal epidemics with significant mortality. One of the most abundant proteins in IAV particles is the matrix protein 1 (M1), which is essential for the virus structural stability. M1 organizes virion assembly and budding at the plasma membrane (PM), where it interacts with other viral components. |  |

Assay Data

Bis-Tris PAGE



Human HLA-A\*02:01&B2M&Influenza M1 (GILGFVFTL) Monomer on Bis-Tris PAGE under reduced condition. The purity is greater than 95%.

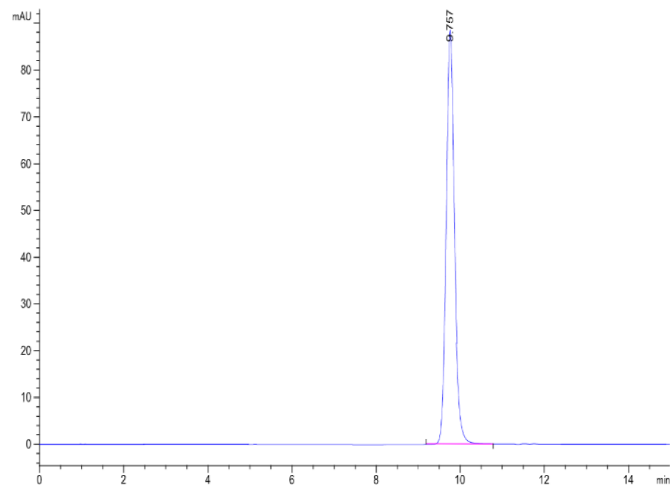
SEC-HPLC

Human HLA-A\*02:01&B2M&Influenza M1 (GILGFVFTL) Monomer Protein



Cat. No. MHC-HE038

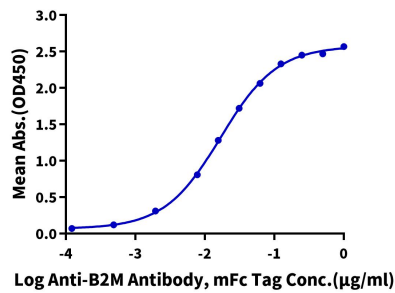
Assay Data



The purity of Human HLA-A\*02:01&B2M&Influenza M1 (GILGFVFTL) Monomer is greater than 95% as determined by SEC-HPLC.

ELISA Data

Human HLA-A\*02:01&B2M&Influenza M158-66(GILGFVFTL) Monomer, His Tag ELISA  
0.05µg Human HLA-A\*02:01&B2M&Influenza M158-66 (GILGFVFTL) Monomer, His Tag Per Well



Immobilized Human HLA-A\*02:01&B2M&Influenza M1 (GILGFVFTL) Monomer, His Tag at 0.5µg/ml (100µl/well) on the plate. Dose response curve for Anti-B2M Antibody, mFc Tag with the EC50 of 16.9ng/ml determined by ELISA.