

Human HLA-A\*11:01&B2M&EGFR L858R (KITDFGRAK) Monomer Protein



Cat. No. MHC-HE039

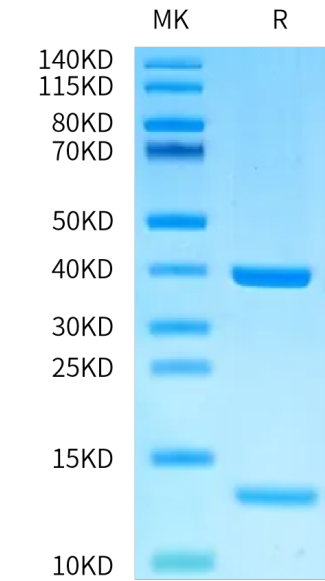
Description	
Source	Recombinant Human HLA-A*11:01&B2M&EGFR L858R (KITDFGRAK) Monomer Protein is expressed from E.coli with His tag and Avi tag at the C-terminus. It contains Gly25-Thr305(HLA-A*11:01), Ile21-Met119(B2M) and KITDFGRAK peptide.
Accession	AAV53343.1(HLA-A*11:01)&P61769(B2M)&KITDFGRAK
Molecular Weight	The protein has a predicted MW of 35.36 kDa (HLA-A*11:01) and 11.9 kDa (B2M) same as Bis-Tris PAGE result.
Endotoxin	Less than 1 EU per µg by the LAL method.
Purity	> 95% as determined by Bis-Tris PAGE > 95% as determined by HPLC

Formulation and Storage	
Formulation	Supplied as 0.22 µm filtered solution in 20mM Tris, 200mM NaCl (pH 8.0).
Storage	Valid for 12 months from date of receipt when stored at -80°C. Recommend to aliquot the protein into smaller quantities for optimal storage. Please minimize freeze-thaw cycles.

Background	
The epidermal growth factor receptor is a transmembrane protein that is a receptor for members of the epidermal growth factor family of extracellular protein ligands. The epidermal growth factor receptor is a member of the ErbB family of receptors, a subfamily of four closely related receptor tyrosine kinases: EGFR, HER2/neu, Her 3 and Her 4. Receptor tyrosine kinase binding ligands of the EGF family and activating several signaling cascades to convert extracellular cues into appropriate cellular responses.	

Assay Data

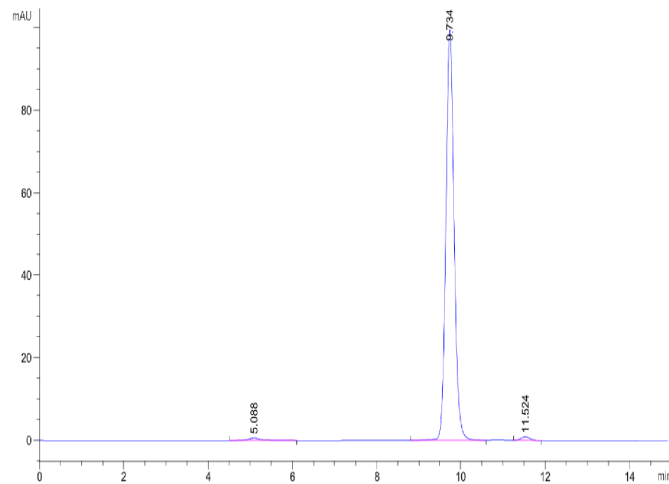
Bis-Tris PAGE



Human HLA-A\*11:01&B2M&EGFR L858R (KITDFGRAK) Monomer on Bis-Tris PAGE under reduced condition. The purity is greater than 95%.

SEC-HPLC

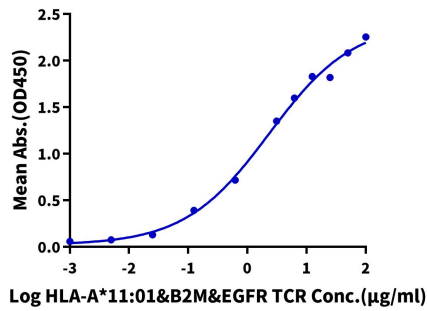
Assay Data



The purity of Human HLA-A\*11:01&B2M&EGFR L858R (KITDFGRAK) Monomer is greater than 95% as determined by SEC-HPLC.

ELISA Data

Human HLA-A\*11:01&B2M&EGFR L858R (KITDFGRAK) Monomer, His Tag ELISA  
0.5µg Human HLA-A\*11:01&B2M&EGFR L858R (KITDFGRAK) Monomer, His Tag Per Well



Immobilized Human HLA-A\*11:01&B2M&EGFR L858R (KITDFGRAK) Monomer, His Tag at 5µg/ml (100µl/well) on the plate. Dose response curve for HLA-A\*11:01&B2M&EGFR TCR with the EC50 of 2.33µg/ml determined by ELISA.