

Biotinylated Human HLA-A*02:01&B2M&Foxp3 (TLIRWAILEA) Monomer Protein



Cat. No. MHC-HE041B

| Description | |
|------------------|--|
| Source | Recombinant Biotinylated Human HLA-A*02:01&B2M&Foxp3 (TLIRWAILEA) Monomer Protein is expressed from E.coli with His tag and Avi tag at the C-terminus. It contains Gly25-Thr305(HLA-A*02:01), Ile21-Met119(B2M) and TLIRWAILEA peptide. |
| Accession | A0A140T913(HLA-A*02:01)&P61769(B2M)&TLIRWAILEA |
| Molecular Weight | The protein has a predicted MW of 35.6 kDa (HLA-A*02:01) and 11.9 kDa (B2M) same as Bis-Tris PAGE result. |
| Endotoxin | Less than 1 EU per µg by the LAL method. |
| Purity | > 95% as determined by Bis-Tris PAGE > 95% as determined by HPLC |

| Formulation and Storage | |
|-------------------------|--|
| Formulation | Supplied as 0.22 µm filtered solution in 20mM Tris, 200mM NaCl (pH 8.0). |
| Storage | Valid for 12 months from date of receipt when stored at -80°C. Recommend to aliquot the protein into smaller quantities for optimal storage. Please minimize freeze-thaw cycles. |

| Background | |
|--|--|
| TLIRWAILEA is position 344-353 of Foxp3 which is a member of a large forkhead family of related proteins. The peptide has minimal homology with other Foxp family members, such as Foxp1, 2 and 4, and it has also been shown to induce strong peptide-specific CD8+ T cell responses, which recognize Foxp3+/HLA-A*02:01+ cutaneous T lymphoma cells. | |

Assay Data

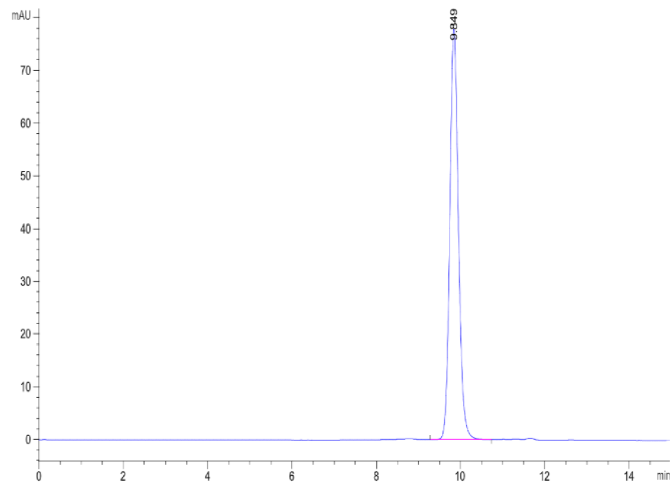
Bis-Tris PAGE



Biotinylated Human HLA-A*02:01&B2M&Foxp3 (TLIRWAILEA) Monomer on Bis-Tris PAGE under reduced condition. The purity is greater than 95%.

SEC-HPLC

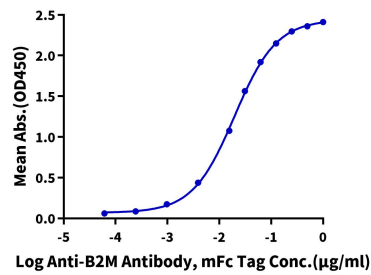
Assay Data



The purity of Biotinylated Human HLA-A*02:01&B2M&Foxp3 (TLIRWAILEA) Monomer is greater than 95% as determined by SEC-HPLC.

ELISA Data

Biotinylated Human HLA-A*02:01&B2M&Foxp3 (TLIRWAILEA) Monomer, His-Avi Tag ELISA
0.1µg Biotinylated Human HLA-A*02:01&B2M&Foxp3 (TLIRWAILEA) Monomer, His-Avi Tag Per Well



Immobilized Biotinylated Human HLA-A*02:01&B2M&Foxp3 (TLIRWAILEA) Monomer, His-Avi Tag at 1µg/ml (100µl/well) on the streptavidin precoated plate (5µg/ml). Dose response curve for Anti-B2M Antibody, mFc Tag with the EC50 of 19.7ng/ml determined by ELISA.