

Human HLA-A*03:01&B2M&KRAS WT (VVGAGGVGK) Monomer Protein



Cat. No. MHC-HE043

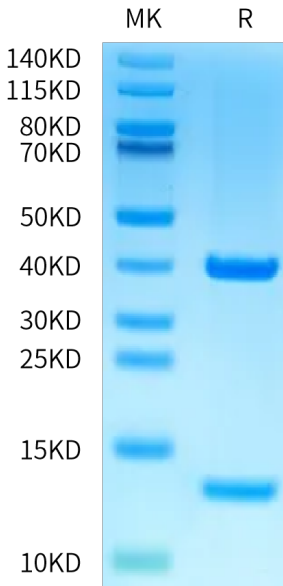
Description	
Source	Recombinant Human HLA-A*03:01&B2M&KRAS WT (VVGAGGVGK) Monomer Protein is expressed from E.coli with His tag and Avi tag at the C-terminus. It contains Gly25-Thr305(HLA-A*03:01), Ile21-Met119(B2M) and VVGAGGVGK peptide.
Accession	NP_002107.3(HLA-A*03:01)&P61769(B2M)&VVGAGGVGK
Molecular Weight	The protein has a predicted MW of 35.26 kDa (HLA-A*03:01) and 11.9 kDa (B2M) same as Bis-Tris PAGE result.
Endotoxin	Less than 1 EU per µg by the LAL method.
Purity	> 95% as determined by Bis-Tris PAGE > 95% as determined by HPLC

Formulation and Storage	
Formulation	Supplied as 0.22 µm filtered solution in 20mM Tris, 200mM NaCl (pH 8.0).
Storage	Valid for 12 months from date of receipt when stored at -80°C. Recommend to aliquot the protein into smaller quantities for optimal storage. Please minimize freeze-thaw cycles.

Background	
Kirsten rat sarcoma 2 viral oncogene homolog (KRAS) is the most commonly mutated oncogene in human cancer. The developments of many cancers depend on sustained expression and signaling of KRAS, which makes KRAS a high-priority therapeutic target.	

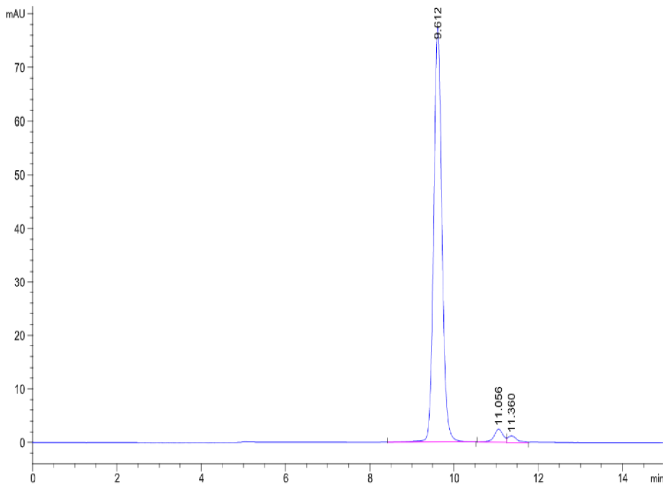
Assay Data

Bis-Tris PAGE



Human HLA-A*03:01&B2M&KRAS WT (VVGAGGVGK) Monomer on Bis-Tris PAGE under reduced condition. The purity is greater than 95%.

SEC-HPLC

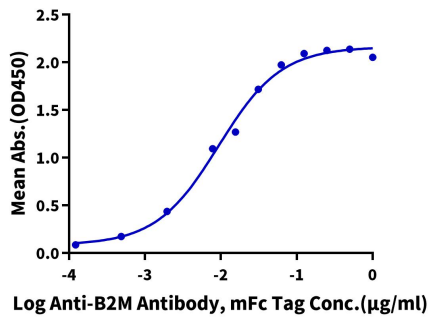


The purity of Human HLA-A*03:01&B2M&KRAS WT (VVGAGGVGK) Monomer is greater than 95% as determined by SEC-HPLC.

Assay Data

ELISA Data

Human HLA-A*03:01&B2M&KRAS WT (VVGAGGVGK) Monomer, His Tag ELISA
0.05µg Human HLA-A*03:01&B2M&KRAS WT (VVGAGGVGK) Monomer, His Tag Per Well



Immobilized Human HLA-A*03:01&B2M&KRAS WT (VVGAGGVGK) Monomer, His Tag at 0.5µg/ml (100µl/well) on the plate. Dose response curve for Anti-B2M Antibody, mFc Tag with the EC50 of 9.3ng/ml determined by ELISA.