

Chimeric HLA-A*02:01 (α3) &mB2M&MAGE-A3 (KVAELVHFL) Monomer Protein



Cat. No. MHC-HM105

Description

| | |
|------------------|---|
| Source | Recombinant Chimeric HLA-A*02:01 (α3) &mB2M&MAGE-A3 (KVAELVHFL) Monomer Protein is expressed from HEK293 with His tag at the C-terminus. It contains Gly25-Thr206 (Human HLA-A*02:01 α1&α2) and Asp207-Glu299 (Mouse H-2Ld α3), Ile21-Met119 (mB2M) and KVAELVHFL peptide. |
| Accession | A0A140T913(Human HLA-A*02:01 α1&α2)&P01897(Mouse H-2Ld α3)&P01887(Mouse B2M)&KVAELVHFL |
| Molecular Weight | The protein has a predicted MW of 48.00 kDa. Due to glycosylation, the protein migrates to 50-65 kDa based on Bis-Tris PAGE result. |
| Endotoxin | Less than 1 EU per µg by the LAL method. |
| Purity | > 95% as determined by Bis-Tris PAGE > 95% as determined by HPLC |

Formulation and Storage

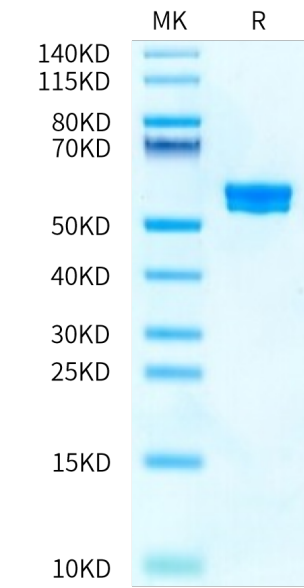
| | |
|-------------|--|
| Formulation | Supplied as 0.22 µm filtered solution in PBS (pH 7.4). |
| Storage | Valid for 12 months from date of receipt when stored at -80°C. Recommend to aliquot the protein into smaller quantities for optimal storage. Please minimize freeze-thaw cycles. |

Background

Melanoma antigen family A, 3 (MAGE-A3) is a cancer-testis antigen whose expression has been demonstrated in a wide array of malignancies including melanoma, brain, breast, lung and ovarian cancer. In addition, its ability to elicit spontaneous humoral and cellular immune responses has been shown in cancer patients.

Assay Data

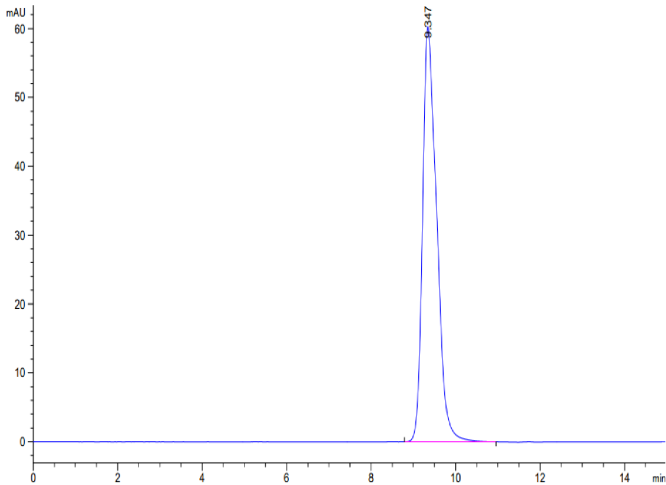
Bis-Tris PAGE



Chimeric HLA-A*02:01 (α3) &mB2M&MAGE-A3 (KVAELVHFL) Monomer on Bis-Tris PAGE under reduced condition. The purity is greater than 95%.

SEC-HPLC

Assay Data



The purity of Chimeric HLA-A*02:01 (mα3) &mB2M&MAGE-A3 (KVAELVHFL) Monomer is greater than 95% as determined by SEC-HPLC.