

Chimeric HLA-A\*02:01 (α3) &mB2M&NY-ESO-1 (SLLMWITQC) Monomer Protein



Cat. No. MHC-HM151

Description

Source	Recombinant Chimeric HLA-A*02:01 (α3) &mB2M&NY-ESO-1 (SLLMWITQC) Monomer Protein is expressed from HEK293 with His tag at the C-terminus. It contains Gly25-Thr206 (Human HLA-A*02:01 α1&α2) and Asp207-Glu299 (Mouse H-2Ld α3), Ile21-Met119 (mB2M) and SLLMWITQC peptide.
Accession	A0A140T913(Human HLA-A*02:01 α1&α2)&P01897(Mouse H-2Ld α3)&&P01887(Mouse B2M)&SLLMWITQC
Molecular Weight	The protein has a predicted MW of 48.02 kDa. Due to glycosylation, the protein migrates to 50-65 kDa based on Bis-Tris PAGE result.
Endotoxin	Less than 1 EU per µg by the LAL method.
Purity	> 95% as determined by Bis-Tris PAGE

Formulation and Storage

Formulation	Supplied as 0.22 µm filtered solution in PBS (pH 7.4).
Storage	Valid for 12 months from date of receipt when stored at -80°C. Recommend to aliquot the protein into smaller quantities for optimal storage. Please minimize freeze-thaw cycles.

Background

NY-ESO-1 or New York esophageal squamous cell carcinoma 1 is a well-known cancer-testis antigen (CTAs) with re-expression in numerous cancer types. Its ability to elicit spontaneous humoral and cellular immune responses, together with its restricted expression pattern, have rendered it a good candidate target for cancer immunotherapy.

Assay Data

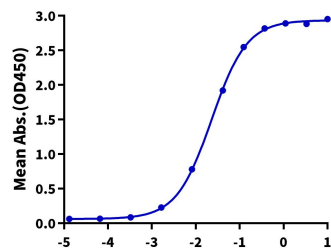
Bis-Tris PAGE



Chimeric HLA-A\*02:01 (α3) &mB2M&NY-ESO-1 (SLLMWITQC) Monomer on Bis-Tris PAGE under reduced condition. The purity is greater than 95%.

ELISA Data

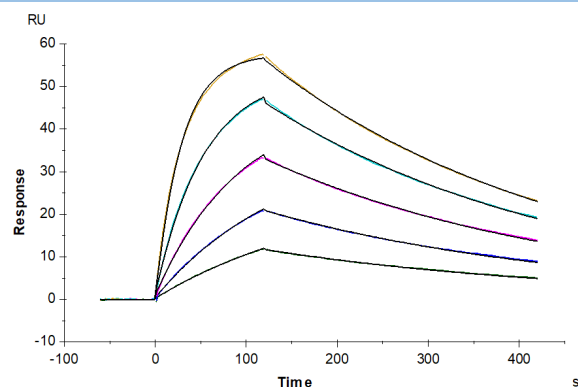
Chimeric HLA-A\*02:01 (α3) &mB2M&NY-ESO-1 (SLLMWITQC), His Tag ELISA  
0.5µg Anti-HLA-A\*02:01&B2M&NY-ESO-1 (SLLMWITQC) Antibody, hFc Tag Per Well



Immobilized Anti-HLA-A\*02:01&B2M&NY-ESO-1 (SLLMWITQC) Antibody, hFc Tag at 5µg/ml (100µl/well) on the plate. Dose response curve for Chimeric HLA-A\*02:01 (α3) &mB2M&NY-ESO-1 (SLLMWITQC) Monomer, His Tag with the EC50 of 23.0ng/ml determined by ELISA (QC Test).

SPR Data

## Assay Data



Anti-HLA-A\*02:01&B2M&NY-ESO-1 (SLLMWITQC) Antibody, hFc Tag captured on CM5 Chip via Protein A can bind Chimeric HLA-A\*02:01( $\alpha 3$ )&mB2M&NY-ESO-1(SLLMWITQC) Monomer, His Tag with an affinity constant of 9.32 nM as determined in SPR assay (Biacore T200).