

# Human HLA-A\*11:01&B2M&EGFR WT (KITDFGLAK) Monomer Protein



Cat. No. MHC-HM180

## Description

Source	Recombinant Human HLA-A*11:01&B2M&EGFR WT (KITDFGLAK) Monomer Protein is expressed from HEK293 with His tag at the C-terminus.
	It contains Gly25-Thr305(HLA-A*11:01), Ile21-Met119(B2M) and KITDFGLAK peptide.
Accession	AAV53343.1(HLA-A*11:01)&P61769(B2M)&KITDFGLAK
Molecular Weight	The protein has a predicted MW of 48.50 kDa. Due to glycosylation, the protein migrates to 50-60 kDa based on Tris-Bis PAGE result.
Endotoxin	Less than 1 EU per µg by the LAL method.
Purity	> 95% as determined by Bis-Tris PAGE
	> 95% as determined by HPLC

## Formulation and Storage

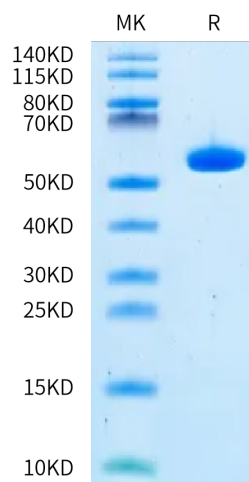
Formulation	Supplied as 0.22 µm filtered solution in PBS, 200mM L-Arginine (pH 7.4).
Storage	Valid for 12 months from date of receipt when stored at -80°C. Recommend to aliquot the protein into smaller quantities for optimal storage. Please minimize freeze-thaw cycles.

## Background

The epidermal growth factor receptor is a transmembrane protein that is a receptor for members of the epidermal growth factor family of extracellular protein ligands. The epidermal growth factor receptor is a member of the ErbB family of receptors, a subfamily of four closely related receptor tyrosine kinases: EGFR, HER2/neu, Her 3 and Her 4. Receptor tyrosine kinase binding ligands of the EGF family and activating several signaling cascades to convert extracellular cues into appropriate cellular responses.

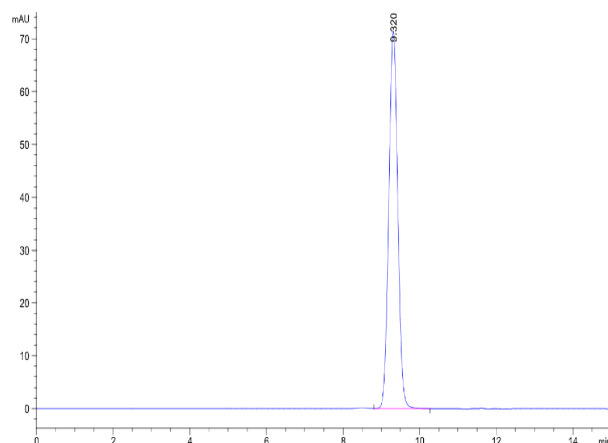
## Assay Data

### Bis-Tris PAGE



Human HLA-A\*11:01&B2M&EGFR WT (KITDFGLAK) Monomer on Bis-Tris PAGE under reduced condition. The purity is greater than 95%.

### SEC-HPLC



The purity of Human HLA-A\*11:01&B2M&EGFR WT (KITDFGLAK) Monomer is greater than 95% as determined by SEC-HPLC.



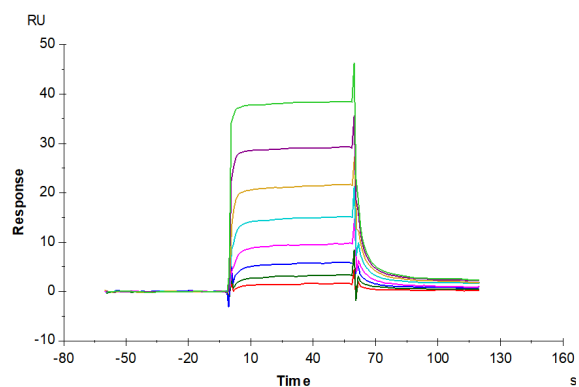
# Human HLA-A\*11:01&B2M&EGFR WT (KITDFGLAK) Monomer Protein

Cat. No. MHC-HM180



## Assay Data

### SPR Data



Human HLA-A\*11:01&B2M&EGFR WT (KITDFGLAK) Monomer, His Tag captured on CM5 Chip via Anti-His Antibody can bind HLA-A\*11:01&B2M&EGFR TCR with an affinity constant of 0.34  $\mu$ M as determined in SPR assay (Biacore T200).