

Human HLA-A*02:01&B2M&GP100 (YLEPGPVTA) Tetramer Protein



Cat. No. MHC-HM402T

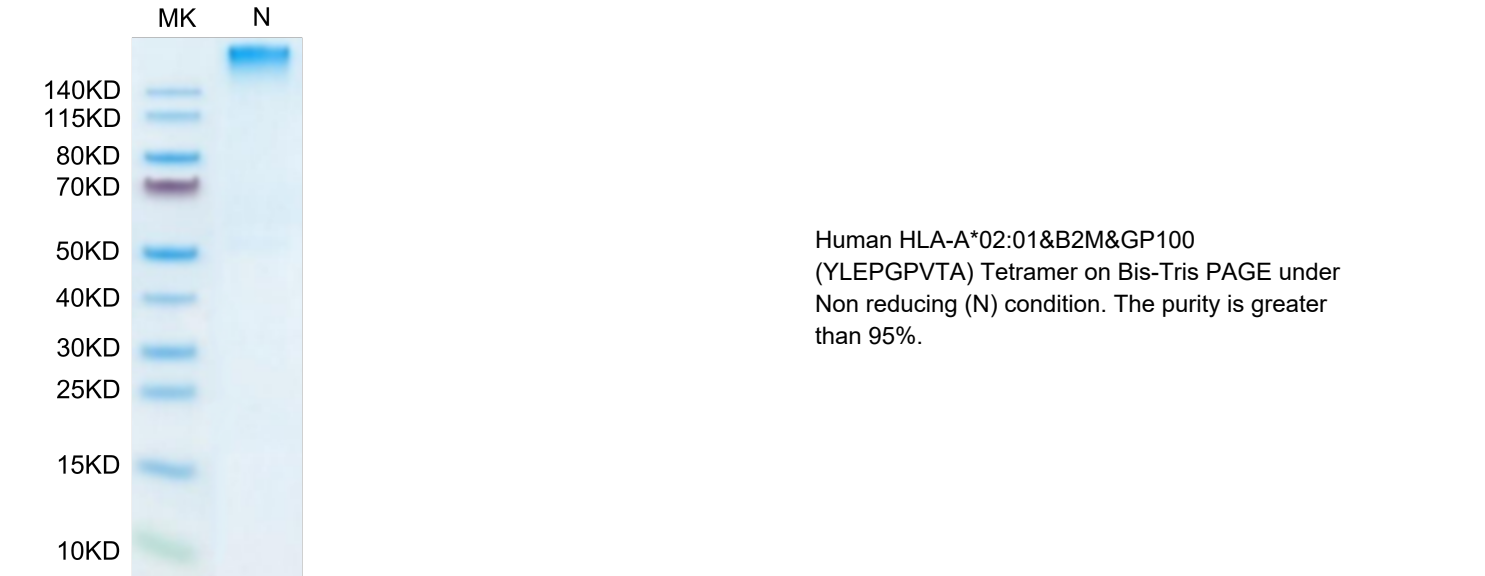
Description	
Source	Recombinant Human HLA-A*02:01&B2M&GP100 (YLEPGPVTA) Tetramer Protein is expressed from HEK293 with His tag and Avi tag at the C-Terminus,tetramer is assembled by biotinylated monomer and streptavidin. It contains Gly25-Thr305(HLA-A*02:01), Ile21-Met119(B2M) and YLEPGPVTA peptide.
Accession	A0A140T913(HLA-A*02:01)&P61769(B2M)&YLEPGPVTA
Molecular Weight	The protein has a predicted MW of 258 kDa. Due to glycosylation, the protein migrates to 260-265 kDa under Non reducing (N) condition based on Bis-Tris PAGE result.
Endotoxin	Less than 1 EU per µg by the LAL method.
Purity	> 95% as determined by Bis-Tris PAGE > 95% as determined by HPLC

Formulation and Storage	
Formulation	Lyophilized from 0.22µm filtered solution in PBS (pH 7.4). Normally 8% trehalose is added as protectant before lyophilization.
Reconstitution	Dissolve the lyophilized protein in distilled water. Please refer to the Certificate of Analysis for detailed instructions.
Storage	-20 to -80°C for 12 months as supplied from date of receipt.-80°C for 3 months after reconstitution.Recommend to aliquot the protein into smaller quantities for optimal storage. Please minimize freeze-thaw cycles.

Background	
Glycoprotein 100, gp100 or Melanocyte protein PMEL is 661 amino acids long and is a type I transmembrane glycoprotein enriched in melanosomes, which are the melanin-producing organelles in melanocytes. This protein is involved in melanosome maturation. The Human HLA-A*0201 gp100 (YLEPGPVTA) complex Protein is a complex of HLA-A*0201 of the MHC Class I, B2M and YLEPGPVTA peptide of the gp100.	

Assay Data

Bis-Tris PAGE



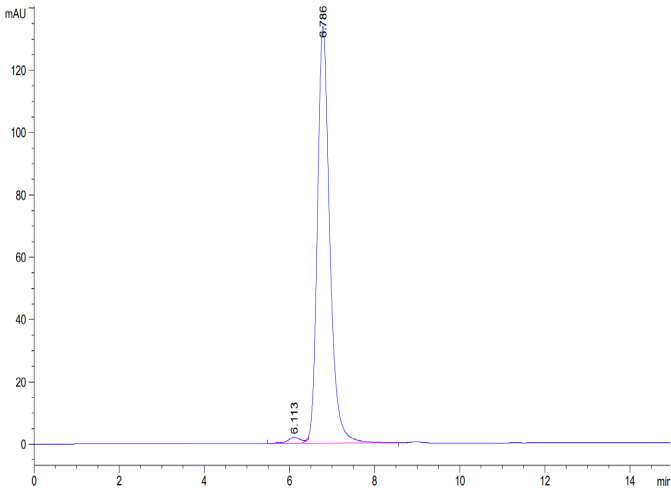
SEC-HPLC

Human HLA-A*02:01&B2M&GP100 (YLEPGPVTA) Tetramer Protein



Cat. No. MHC-HM402T

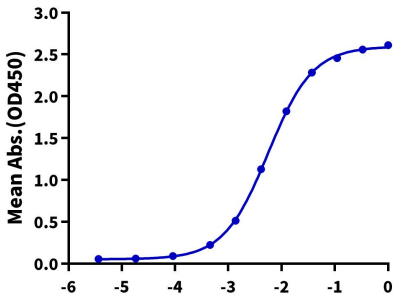
Assay Data



The purity of Human HLA-A*02:01&B2M&GP100 (YLEPGPVTA) Tetramer was greater than 95% as determined by SEC-HPLC.

ELISA Data

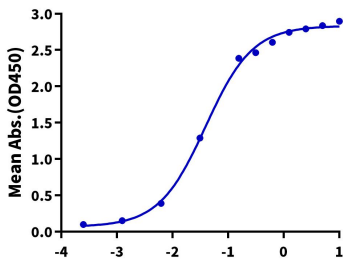
Human HLA-A*02:01&B2M&GP100 (YLEPGPVTA) Tetramer, His Tag ELISA
0.1µg Human HLA-A*02:01&B2M&GP100 (YLEPGPVTA) Tetramer, His Tag Per Well



Immobilized Human HLA-A*02:01&B2M&GP100 (YLEPGPVTA) Tetramer, His Tag at 2µg/ml (100µl/Well) on the plate. Dose response curve for Anti-HLA-A*02:01&B2M&GP100 (YLEPGPVTA) Antibody, hFc Tag with the EC50 of 5.6ng/ml determined by ELISA (QC Test).

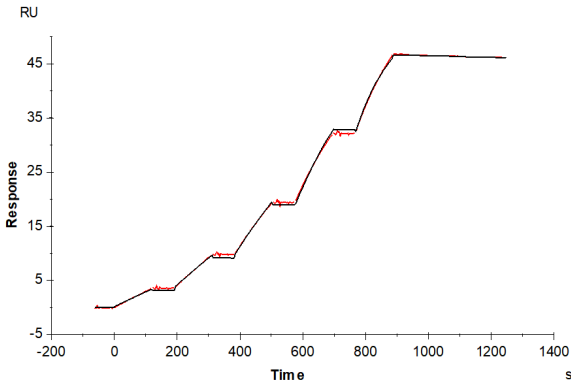
ELISA Data

Human HLA-A*02:01&B2M&GP100 (YLEPGPVTA) Tetramer, His Tag ELISA
0.1µg Tebentafusp Per Well



Immobilized Tebentafusp, No Tag at 1µg/ml (100µl/well) on the plate. Dose response curve for Human HLA-A*02:01&B2M&GP100 (YLEPGPVTA) Tetramer, His Tag with the EC50 of 39.5ng/ml determined by ELISA.

SPR Data



Human HLA-A*02:01&B2M&GP100 (YLEPGPVTA) Tetramer, His Tag immobilized on CM5 Chip can bind Tebentafusp with an affinity constant of 0.196 nM as determined in SPR assay (Biacore T200).