

Human HLA-A*02:01&B2M&AFP (FMNKFIYEI) Monomer Protein



Cat. No. MHC-HM407

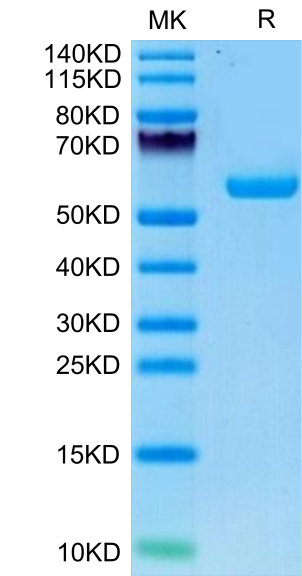
Description	
Source	Recombinant Human HLA-A*02:01&B2M&AFP (FMNKFIYEI) Monomer Protein is expressed from HEK293 with His tag and Avi tag at the C-Terminus. It contains Gly25-Thr305 (HLA-A*02:01), Ile21-Met119 (B2M) and FMNKFIYEI peptide.
Accession	A0A140T913(HLA-A*02:01)&P61769(B2M)&FMNKFIYEI
Molecular Weight	The protein has a predicted MW of 50.6 kDa. Due to glycosylation, the protein migrates to 53-60 kDa based on Bis-Tris PAGE result.
Endotoxin	Less than 1 EU per ug by the LAL method.
Purity	> 95% as determined by Bis-Tris PAGE > 95% as determined by HPLC

Formulation and Storage	
Formulation	Lyophilized from 0.22µm filtered solution in PBS (pH 7.4). Normally 8% trehalose is added as protectant before lyophilization.
Reconstitution	Dissolve the lyophilized protein in distilled water. Please refer to the Certificate of Analysis for detailed instructions.
Storage	-20 to -80°C for 12 months as supplied from date of receipt.-80°C for 3 months after reconstitution.Recommend to aliquot the protein into smaller quantities for optimal storage. Please minimize freeze-thaw cycles.

Background	
Alpha-fetoprotein (AFP), a specific liver cancer marker, T cells expressing AFP-CAR selectively degranulated, released cytokines, and lysed liver cancer cells that were HLA-A*02:01 /AFP while sparing cells from multiple tissue types that were negative for either expressed proteins.CAR T-cell immunotherapy targeting intracellular/secreted solid tumor antigens can elicit a potent antitumor response.	

Assay Data

Bis-Tris PAGE



Human HLA-A*02:01&B2M&AFP (FMNKFIYEI) Monomer on Bis-Tris PAGE under reduced condition. The purity is greater than 95%.

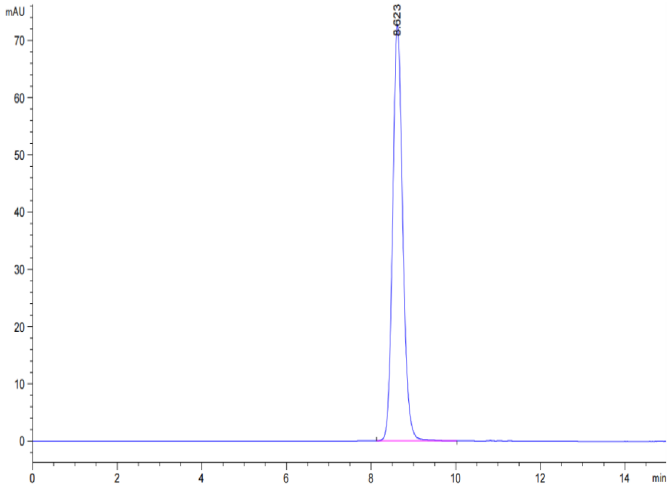
SEC-HPLC

Human HLA-A*02:01&B2M&AFP (FMNKFIYEI) Monomer Protein



Cat. No. MHC-HM407

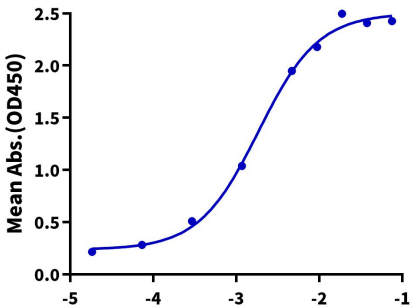
Assay Data



The purity of Human HLA-A*02:01&B2M&AFP (FMNKFIYEI) Monomer is greater than 95% as determined by SEC-HPLC.

ELISA Data

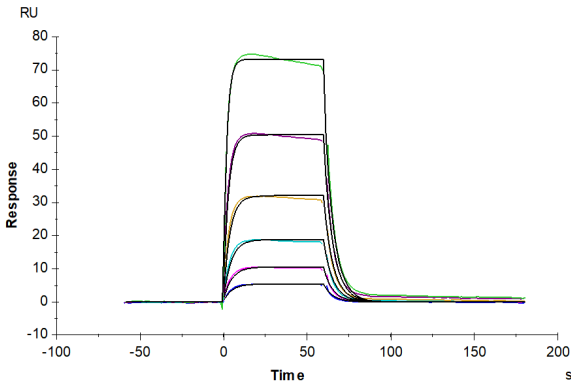
Human HLA-A*02:01&B2M&AFP (FMNKFIYEI) Monomer, His Tag ELISA
0.1µg Human HLA-A*02:01&B2M&AFP (FMNKFIYEI) Monomer, His Tag Per Well



Log Anti-HLA-A*02:01&B2M&AFP Antibody, hFc Tag Conc.(µg/ml)

Immobilized Human HLA-A*02:01&B2M&AFP (FMNKFIYEI) Monomer, His Tag at 1µg/ml (100µl/well) on the plate. Dose response curve for Anti-HLA-A*02:01&B2M&AFP (FMNKFIYEI) Antibody, hFc Tag with the EC50 of 1.9ng/ml determined by ELISA (QC Test).

SPR Data



Human HLA-A*02:01&B2M&AFP (FMNKFIYEI) Monomer, His Tag captured on CM5 Chip via Anti-His Antibody can bind HLA-A*02:01&B2M&AFP (FMNKFIYEI) TCR with an affinity constant of 0.923 µM as determined in SPR assay (Biacore T200).