

Biotinylated Human HLA-A\*02:01&B2M&NY-ESO-1 (SLLMWITQV) Monomer Protein



Cat. No. MHC-HM40NB

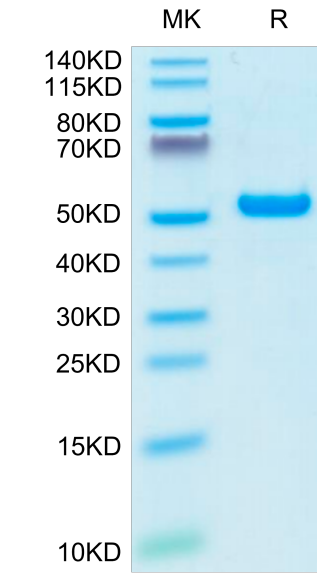
| Description      |                                                                                                                                                                                                                                             |
|------------------|---------------------------------------------------------------------------------------------------------------------------------------------------------------------------------------------------------------------------------------------|
| Source           | Recombinant Biotinylated Human HLA-A*02:01&B2M&NY-ESO-1 (SLLMWITQV) Monomer Protein is expressed from HEK293 with His tag and Avi tag at the C-Terminus.<br>It contains Gly25-Thr305(HLA-A*02:01), Ile21-Met119(B2M) and SLLMWITQV peptide. |
| Accession        | A0A140T913(HLA-A*02:01)&P61769(B2M)&SLLMWITQV                                                                                                                                                                                               |
| Molecular Weight | The protein has a predicted MW of 50.5 kDa. Due to glycosylation, the protein migrates to 51-56 kDa based on Bis-Tris PAGE result.                                                                                                          |
| Endotoxin        | Less than 1 EU per µg by the LAL method.                                                                                                                                                                                                    |
| Purity           | > 95% as determined by Bis-Tris PAGE<br>> 95% as determined by HPLC                                                                                                                                                                         |

| Formulation and Storage |                                                                                                                                                                                                                       |
|-------------------------|-----------------------------------------------------------------------------------------------------------------------------------------------------------------------------------------------------------------------|
| Formulation             | Lyophilized from 0.22µm filtered solution in PBS (pH 7.4). Normally 8% trehalose is added as protectant before lyophilization.                                                                                        |
| Reconstitution          | Dissolve the lyophilized protein in distilled water. Please refer to the Certificate of Analysis for detailed instructions.                                                                                           |
| Storage                 | -20 to -80°C for 12 months as supplied from date of receipt.-80°C for 3 months after reconstitution.Recommend to aliquot the protein into smaller quantities for optimal storage. Please minimize freeze-thaw cycles. |

| Background                                                                                                                                                                                                                                                                                                                                       |  |
|--------------------------------------------------------------------------------------------------------------------------------------------------------------------------------------------------------------------------------------------------------------------------------------------------------------------------------------------------|--|
| NY-ESO-1 or New York esophageal squamous cell carcinoma 1 is a well-known cancer-testis antigen (CTAs) with re-expression in numerous cancer types. Its ability to elicit spontaneous humoral and cellular immune responses, together with its restricted expression pattern, have rendered it a good candidate target for cancer immunotherapy. |  |

Assay Data

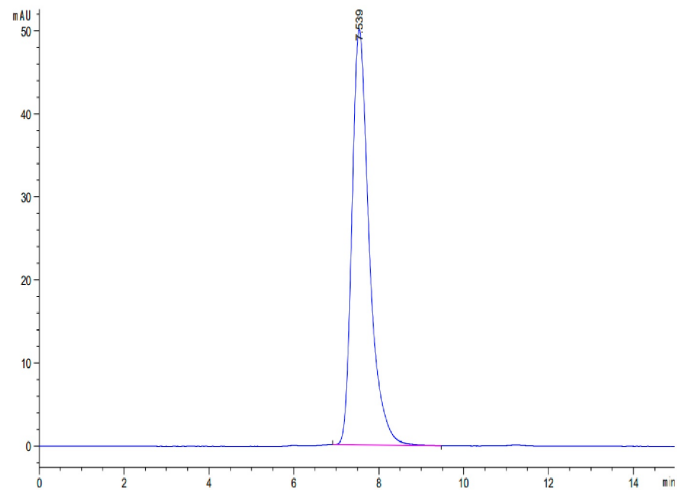
Bis-Tris PAGE



Biotinylated Human HLA-A\*02:01&B2M&NY-ESO-1 (SLLMWITQV) Monomer on Bis-Tris PAGE under reduced condition. The purity is greater than 95%.

SEC-HPLC

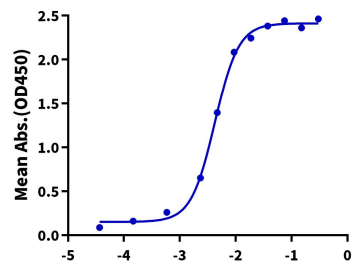
Assay Data



The purity of Biotinylated Human HLA-A\*02:01&B2M&NY-ESO-1 (SLLMWITQV) Monomer is greater than 95% as determined by SEC-HPLC.

ELISA Data

**Biotinylated Human HLA-A\*02:01&B2M&NY-ESO-1 (SLLMWITQV), His-Avi Tag ELISA**  
0.05µg Biotinylated Human HLA-A\*02:01&B2M&NY-ESO-1 (SLLMWITQV), His-Avi Tag Per Well



Immobilized Biotinylated Human HLA-A\*02:01&B2M&NY-ESO-1 (SLLMWITQV) Monomer, His-Avi Tag at 0.5µg/ml (100µl/well) on the streptavidin precoated plate (5µg/ml). Dose response curve for Anti-HLA-A\*02:01&B2M&NY-ESO-1 (SLLMWITQV) Antibody, hFc Tag with the EC50 of 4.2ng/ml determined by ELISA (QC Test).