

Human HLA-A*02:01&B2M&NY-ESO-1 (SLLMWITQV) Tetramer Protein



Cat. No. MHC-HM40NT

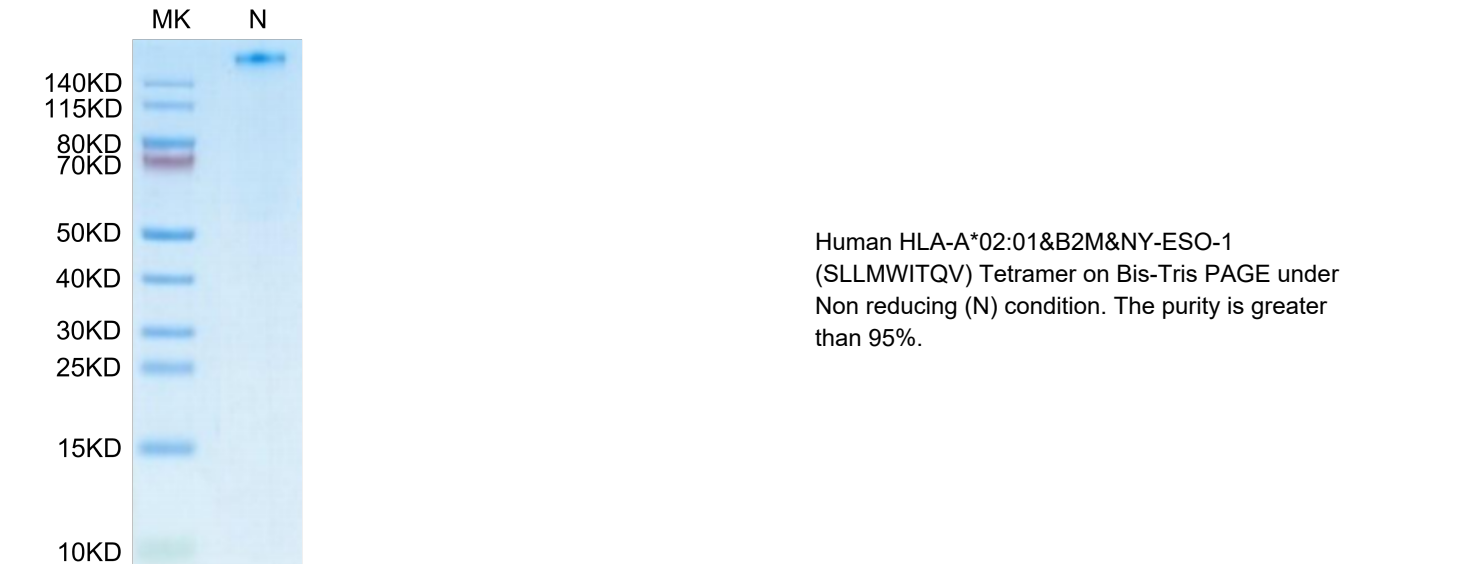
Description	
Source	Recombinant Human NY-ESO-1(HLA-A*02:01) Tetramer Protein is expressed from HEK293 with His tag and Avi tag at the C-Terminus,tetramer is assembled by biotinylated monomer and streptavidin. It contains Gly25-Thr305(HLA-A*02:01), Ile21-Met119(B2M) and SLLMWITQV peptide.
Accession	A0A140T913(HLA-A*02:01)&P61769(B2M)&SLLMWITQV
Molecular Weight	The protein has a predicted MW of 258 kDa. Due to glycosylation, the protein migrates to 260-265 kDa under Non reducing (N) condition based on Bis-Tris PAGE result.
Endotoxin	Less than 1 EU per µg by the LAL method.
Purity	> 95% as determined by Bis-Tris PAGE > 95% as determined by HPLC

Formulation and Storage	
Formulation	Lyophilized from 0.22µm filtered solution in PBS (pH 7.4). Normally 8% trehalose is added as protectant before lyophilization.
Reconstitution	Dissolve the lyophilized protein in distilled water. Please refer to the Certificate of Analysis for detailed instructions.
Storage	-20 to -80°C for 24 months as supplied from date of receipt.-80°C for 3 months after reconstitution.Recommend to aliquot the protein into smaller quantities for optimal storage. Please minimize freeze-thaw cycles.

Background	
NY-ESO-1 or New York esophageal squamous cell carcinoma 1 is a well-known cancer-testis antigen (CTAs) with re-expression in numerous cancer types. Its ability to elicit spontaneous humoral and cellular immune responses, together with its restricted expression pattern, have rendered it a good candidate target for cancer immunotherapy.	

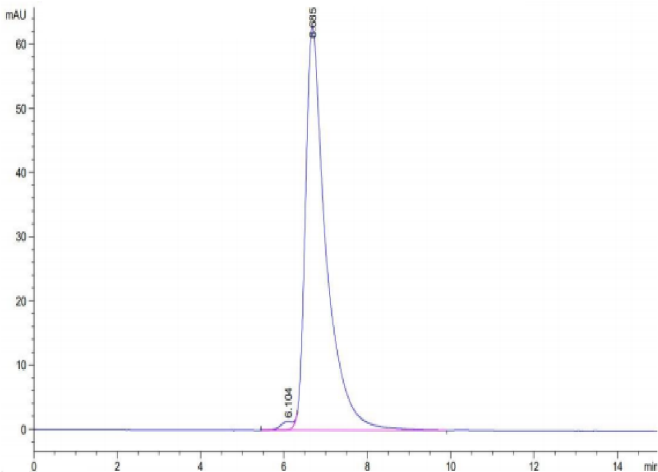
Assay Data

Bis-Tris PAGE



SEC-HPLC

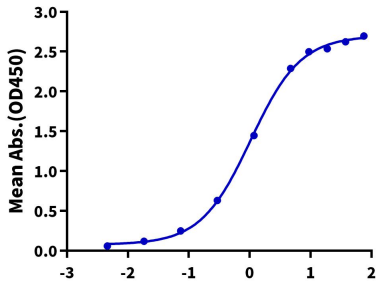
Assay Data



The purity of Human HLA-A*02:01&B2M&NY-ESO-1 (SLLMWITQV) Tetramer is greater than 95% as determined by SEC-HPLC.

ELISA Data

Human HLA-A*02:01&B2M&NY-ESO-1 (SLLMWITQV) Tetramer, His Tag ELISA
0.5µg Human HLA-A*02:01&B2M&NY-ESO-1 (SLLMWITQV) Tetramer, His Tag Per Well



Immobilized Human HLA-A*02:01&B2M&NY-ESO-1 (SLLMWITQV) Tetramer, His Tag at 5µg/ml (100µl/well) on the plate. Dose response curve for Anti-HLA-A*02:01&B2M&NY-ESO-1 (SLLMWITQV) Antibody, hFc Tag with the EC50 of 1.0ng/ml determined by ELISA.