

Human HLA-A\*02:01&B2M&NY-ESO-1 (SLLMWITQV) Monomer Protein



Cat. No. MHC-HM40N

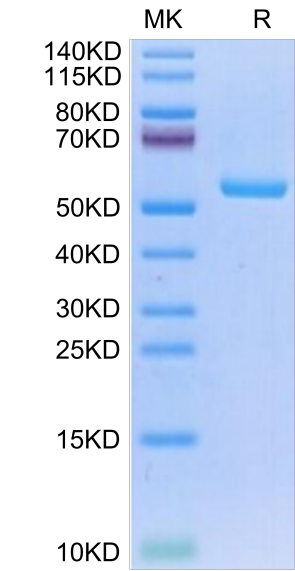
| Description      |  |
|------------------|--|
| Source           | Recombinant Human HLA-A*02:01&B2M&NY-ESO-1 (SLLMWITQV) Monomer Protein is expressed from HEK293 with His tag and Avi tag at the C-Terminus.<br>It contains Gly25-Thr305(HLA-A*02:01), Ile21-Met119(B2M) and SLLMWITQV peptide. |
| Accession        | A0A140T913(HLA-A*02:01)&P61769(B2M)&SLLMWITQV  |
| Molecular Weight | The protein has a predicted MW of 50.5 kDa. Due to glycosylation, the protein migrates to 55-60 kDa based on Bis-Tris PAGE result.   |
| Endotoxin        | Less than 1 EU per µg by the LAL method.   |
| Purity           | > 95% as determined by Bis-Tris PAGE<br>> 95% as determined by HPLC  |

| Formulation and Storage |   |
|-------------------------|---|
| Formulation             | Lyophilized from 0.22µm filtered solution in PBS (pH 7.4). Normally 8% trehalose is added as protectant before lyophilization.  |
| Reconstitution          | Dissolve the lyophilized protein in distilled water. Please refer to the Certificate of Analysis for detailed instructions.   |
| Storage                 | -20 to -80°C for 12 months as supplied from date of receipt.-80°C for 3 months after reconstitution.Recommend to aliquot the protein into smaller quantities for optimal storage. Please minimize freeze-thaw cycles. |

| Background |  |
|------------|--|
|            | NY-ESO-1 or New York esophageal squamous cell carcinoma 1 is a well-known cancer-testis antigen (CTAs) with re-expression in numerous cancer types. Its ability to elicit spontaneous humoral and cellular immune responses, together with its restricted expression pattern, have rendered it a good candidate target for cancer immunotherapy. |

Assay Data

Bis-Tris PAGE



Human HLA-A\*02:01&B2M&NY-ESO-1 (SLLMWITQV) Monomer on Bis-Tris PAGE under reduced condition. The purity is greater than 95%.

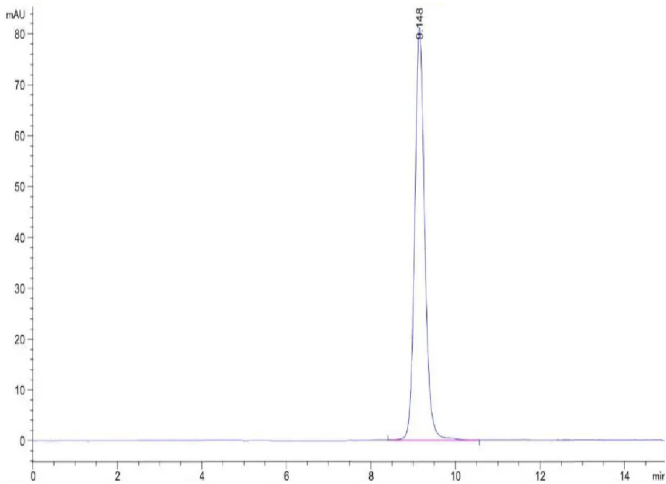
SEC-HPLC

Human HLA-A\*02:01&B2M&NY-ESO-1 (SLLMWITQV) Monomer Protein



Cat. No. MHC-HM40N

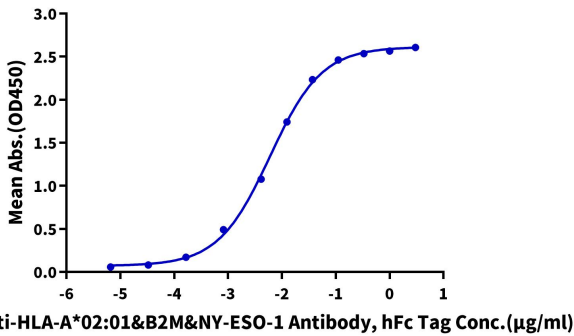
Assay Data



The purity of Human HLA-A\*02:01&B2M&NY-ESO-1 (SLLMWITQV) Monomer is greater than 95% as determined by SEC-HPLC.

ELISA Data

Human HLA-A\*02:01&B2M&NY-ESO-1 (SLLMWITQV) Monomer, His Tag ELISA  
0.5µg Human HLA-A\*02:01&B2M&NY-ESO-1 (SLLMWITQV) Monomer, His Tag Per Well



Immobilized Human HLA-A\*02:01&B2M&NY-ESO-1 (SLLMWITQV) Monomer, His Tag at 5µg/ml (100µl/well) on the plate. Dose response curve for Anti-HLA-A\*02:01&B2M&NY-ESO-1 (SLLMWITQV) Antibody, hFc Tag with the EC50 of 6.0ng/ml determined by ELISA.