

Human HLA-A*11:01&B2M&LMP2 (SSCSSCPLTK) Tetramer Protein



Cat. No. MHC-HM410T

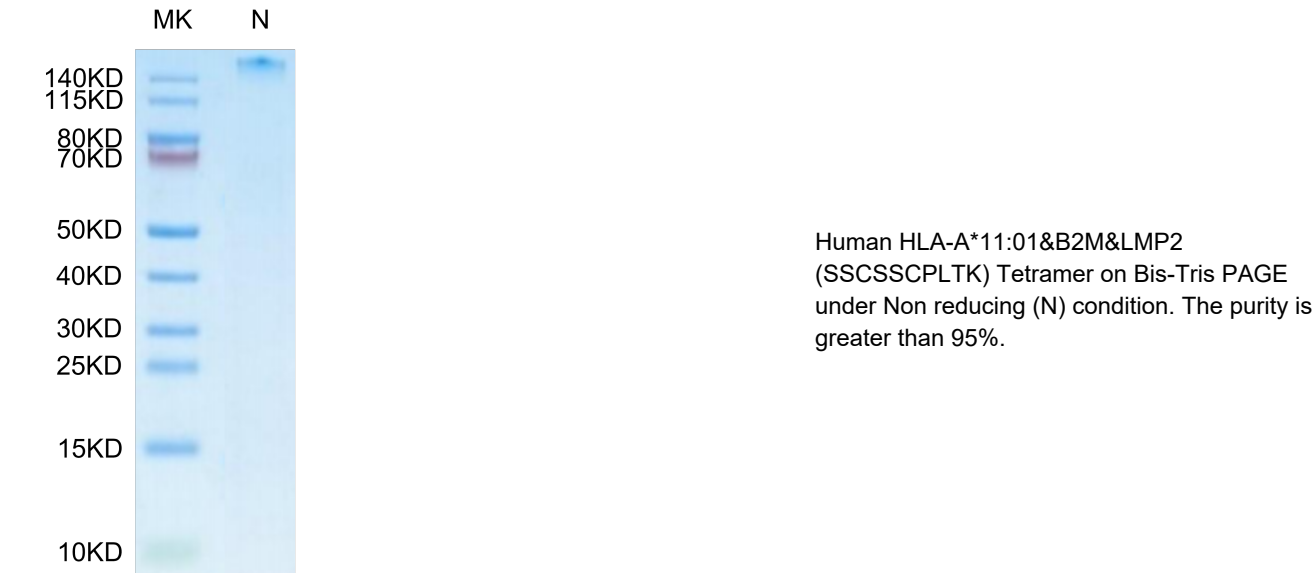
Description	
Source	Recombinant Human LMP2(HLA-A*11:01) Tetramer Protein is expressed from HEK293 with His tag and Avi tag at the C-Terminus,tetramer is assembled by biotinylated monomer and streptavidin. It contains Gly25-Thr305(HLA-A*11:01), Ile21-Met119(B2M) and SSCSSCPLTK peptide.
Accession	AAV53343.1(HLA-A*11:01)&P61769(B2M)&SSCSSCPLTK
Molecular Weight	The protein has a predicted MW of 258 kDa. Due to glycosylation, the protein migrates to 260-265 kDa under Non reducing (N) condition based on Bis-Tris PAGE result.
Endotoxin	Less than 1 EU per µg by the LAL method.
Purity	> 95% as determined by Bis-Tris PAGE > 95% as determined by HPLC

Formulation and Storage	
Formulation	Lyophilized from 0.22µm filtered solution in PBS (pH 7.4). Normally 8% trehalose is added as protectant before lyophilization.
Reconstitution	Dissolve the lyophilized protein in distilled water. Please refer to the Certificate of Analysis for detailed instructions.
Storage	-20 to -80°C for 12 months as supplied from date of receipt.-80°C for 3 months after reconstitution.Recommend to aliquot the protein into smaller quantities for optimal storage. Please minimize freeze-thaw cycles.

Background	
The immunoproteasome, having been linked to neurodegenerative diseases and hematological cancers, has been shown to play an important role in MHC class I antigen presentation. The development of molecular probes that selectively inhibit the major catalytic subunit, LMP2, of the immunoproteasome,LMP2-rich cancer cells compared to LMP2-deficient cancer cells are more sensitive to growth inhibition by the LMP2-specific inhibitor, implicating an important role of LMP2 in regulating cell growth of malignant tumors that highly express LMP2.	

Assay Data

Bis-Tris PAGE



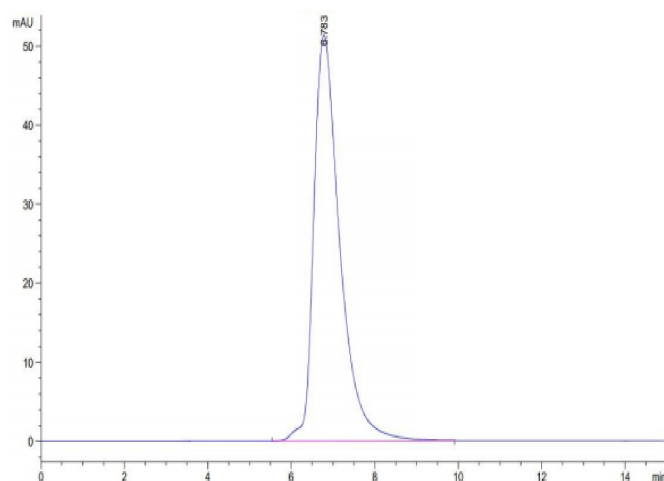
SEC-HPLC

Human HLA-A*11:01&B2M&LMP2 (SSCSSCPLTK) Tetramer Protein

Cat. No. MHC-HM410T



Assay Data



The purity of Human HLA-A*11:01&B2M&LMP2 (SSCSSCPLTK) Tetramer is greater than 95% as determined by SEC-HPLC.