

Chimeric HLA-A*02:01 (α3) &B2M&WT-1 (RMFPNAPYL) Monomer Protein



Cat. No. MHC-HM414

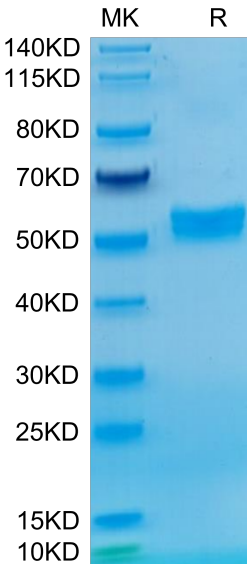
Description	
Source	Recombinant Chimeric HLA-A*02:01(α3)&B2M&WT-1 (RMFPNAPYL) Monomer Protein is expressed from HEK293 with His tag and Avi tag at the C-Terminus. It contains Gly25-Thr206(Human HLA-A*02:01 α1&α2)&Asp207-Glu299(Mouse H-2Ld α3), Ile21-Met119 (B2M) and RMFPNAPYL peptide.
Accession	A0A140T913(Human HLA-A*02:01 α1&α2)&P01897(Mouse H-2Ld α3)&P61769(B2M)&RMFPNAPYL
Molecular Weight	The protein has a predicted MW of 50.5 kDa. Due to glycosylation, the protein migrates to 51-60 kDa based on Bis-Tris PAGE result.
Endotoxin	Less than 1 EU per ug by the LAL method.
Purity	> 95% as determined by Bis-Tris PAGE > 95% as determined by HPLC

Formulation and Storage	
Formulation	Lyophilized from 0.22μm filtered solution in PBS (pH 7.4). Normally 8% trehalose is added as protectant before lyophilization.
Reconstitution	Dissolve the lyophilized protein in distilled water. Please refer to the Certificate of Analysis for detailed instructions.
Storage	-20 to -80°C for 12 months as supplied from date of receipt.-80°C for 3 months after reconstitution.Recommend to aliquot the protein into smaller quantities for optimal storage. Please minimize freeze-thaw cycles.

Background	
The WT1 protein plays a role in cell growth, the process by which cells mature to perform specific functions (differentiation), and the self-destruction of cells (apoptosis). WT1 is differentially expressed in serous, endometrioid, clear cell, and mucinous carcinomas of the peritoneum, fallopian tube, ovary, and endometrium.The Human HLA-A*0201 WT-1 (RMFPNAPYL) complex Protein is a complex of HLA-A*0201 of the MHC Class I, B2M and RMFPNAPYL peptide of the WT-1.	

Assay Data

Bis-Tris PAGE



Chimeric HLA-A*02:01 (α3) &B2M&WT-1 (RMFPNAPYL) Monomer on Bis-Tris PAGE under reduced condition. The purity is greater than 95%.

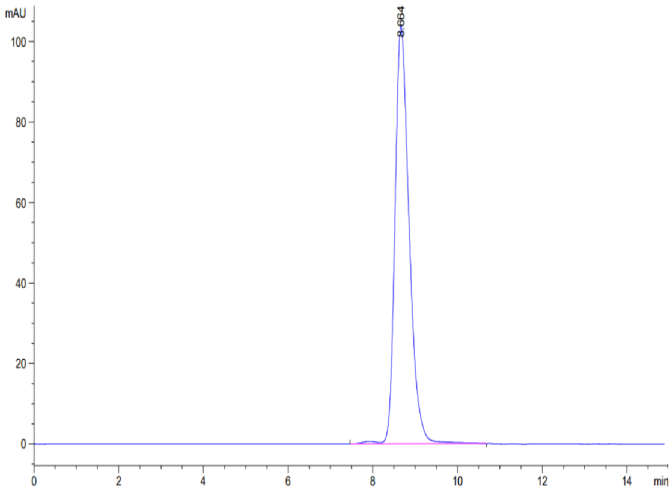
SEC-HPLC

Chimeric HLA-A*02:01 (α3) &B2M&WT-1 (RMFPNAPYL) Monomer Protein

Cat. No. MHC-HM414



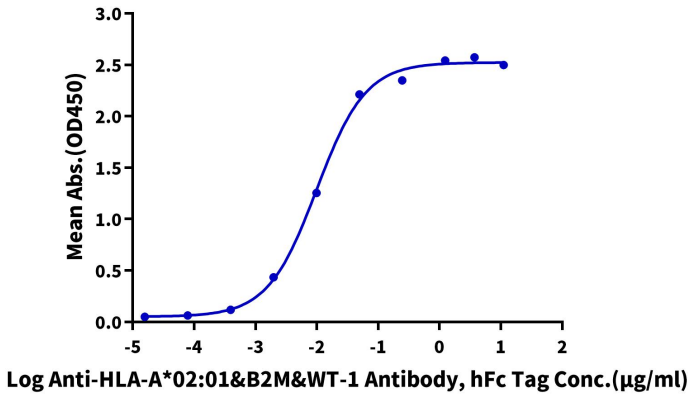
Assay Data



The purity of Chimeric HLA-A*02:01 (α3) &B2M&WT-1 (RMFPNAPYL) Monomer is greater than 95% as determined by SEC-HPLC.

ELISA Data

Human&Mouse Chimeric HLA-A*02:01&B2M&WT-1, His Tag ELISA
0.5μg Human&Mouse Chimeric HLA-A*02:01&B2M&WT-1, His Tag Per Well



Immobilized Chimeric HLA-A*02:01 (α3) &B2M&WT-1 (RMFPNAPYL) Monomer, His Tag at 5μg/ml (100μl/well) on the plate. Dose response curve for Anti-HLA-A*02:01&B2M&WT-1 (RMFPNAPYL) Antibody, hFc Tag with the EC50 of 9.9ng/ml determined by ELISA.