

Human Peptide Ready HLA-A\*11:01&B2M Monomer Protein



Cat. No. MHC-HM41R

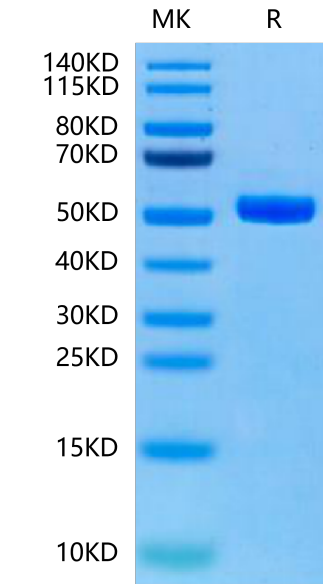
Description	
Source	Recombinant Human Peptide Ready HLA-A*11:01&B2M Monomer Protein is expressed from HEK293 with His tag and Avi tag at the C-Terminus. It contains Gly25-Thr305 (HLA-A*11:01) and Ile21-Met119 (B2M).
Accession	AAV53343.1 (HLA-A*11:01)&P61769 (B2M)
Molecular Weight	The protein has a predicted MW of 48.50 kDa. Due to glycosylation, the protein migrates to 50-60 kDa based on Bis-Tris PAGE result.
Endotoxin	Less than 1 EU per µg by the LAL method.
Purity	> 95% as determined by Bis-Tris PAGE > 95% as determined by HPLC

Formulation and Storage	
Formulation	Lyophilized from 0.22 µm filtered solution in PBS, 100mM L-Arginine (pH 7.4). Normally 8% trehalose is added as protectant before lyophilization.
Reconstitution	Dissolve the lyophilized protein in distilled water. Please refer to the Certificate of Analysis for detailed instructions.
Storage	-20 to -80°C for 12 months as supplied from date of receipt.-80°C for 3 months after reconstitution.Recommend to aliquot the protein into smaller quantities for optimal storage. Please minimize freeze-thaw cycles.

Background	
Peptide Ready HLA-A*11:01&B2M Monomer is absent from peptide, namely peptide-receptive MHC. It can be loaded with antigenic peptides matching HLA-A*11:01. Peptide ready MHC molecules comprising human HLA alleles and B2M, which can be readily tetramerized and loaded with peptides of choice in a high-throughput manner.	

Assay Data

Bis-Tris PAGE



Human Peptide Ready HLA-A\*11:01&B2M Monomer on Bis-Tris PAGE under reduced condition. The purity is greater than 95%.

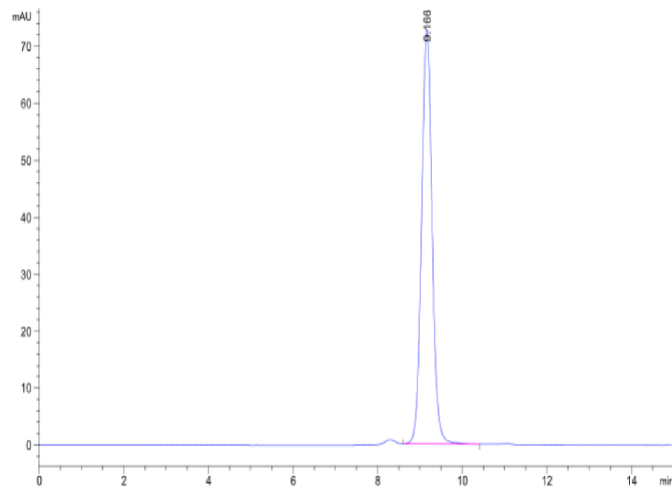
SEC-HPLC

Human Peptide Ready HLA-A\*11:01&B2M Monomer Protein

Cat. No. MHC-HM41R



Assay Data

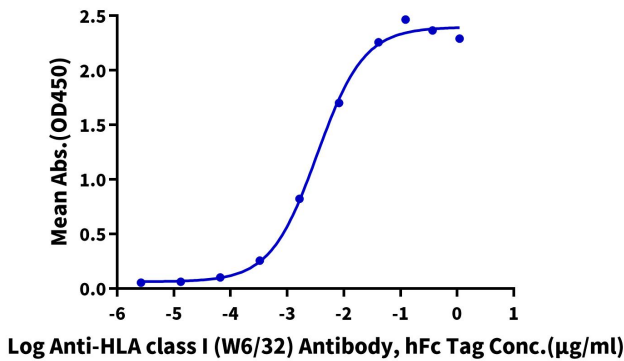


The purity of Human Peptide Ready HLA-A\*11:01&B2M Monomer is greater than 95% as determined by SEC-HPLC.

ELISA Data

Human Peptide Ready HLA-A\*11:01&B2M Monomer, His Tag ELISA

0.1µg Human Peptide Ready HLA-A\*11:01&B2M Monomer, His Tag Per Well



Immobilized Human Peptide Ready HLA-A\*11:01&B2M Monomer, His Tag at 1 µg/ml (100 µl/well) on the plate. Dose response curve for Anti-HLA class I (W6/32) Antibody, hFc Tag with the EC50 of 3.4 ng/ml determined by ELISA.