

Human HLA-A*01:01&B2M&MAGE-A3 (EVDPIGHLY) Tetramer Protein



Cat. No. MHC-HM427T

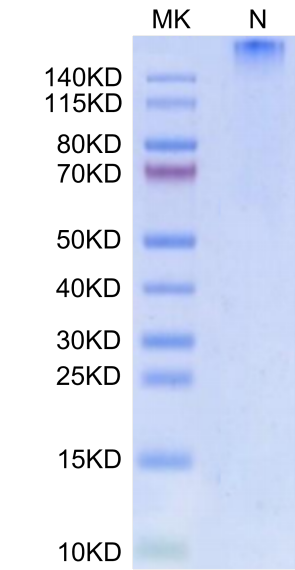
Description	
Source	Recombinant Human MAGE-A3(HLA-A*01:01) Tetramer Protein is expressed from HEK293 with His tag and Avi tag at the C-Terminus, tetramer is assembled by biotinylated monomer and streptavidin. It contains Gly25-Thr305(HLA-A*01:01), Ile21-Met119(B2M) and EVDPIGHLY peptide.
Accession	Q5SUL5(HLA-A*01:01)&P61769(B2M)&EVDPIGHLY
Molecular Weight	The protein has a predicted MW of 258 kDa. Due to glycosylation, the protein migrates to 260-265 kDa under Non reducing (N) condition based on Bis-Tris PAGE result.
Endotoxin	Less than 1 EU per µg by the LAL method.
Purity	> 95% as determined by Bis-Tris PAGE > 95% as determined by HPLC

Formulation and Storage	
Formulation	Lyophilized from 0.22µm filtered solution in PBS (pH 7.4). Normally 8% trehalose is added as protectant before lyophilization.
Reconstitution	Dissolve the lyophilized protein in distilled water. Please refer to the Certificate of Analysis for detailed instructions.
Storage	-20 to -80°C for 12 months as supplied from date of receipt. -80°C for 3 months after reconstitution. Recommend to aliquot the protein into smaller quantities for optimal storage. Please minimize freeze-thaw cycles.

Background	
Melanoma antigen gene A3 (MAGE-A3) is one of the most immunogenic cancer testis antigens and is common in various types of cancers. MAGE-A3 can be considered as a predictor for poor prognosis and an option for vaccine immunotherapy in patients with PCa.	

Assay Data

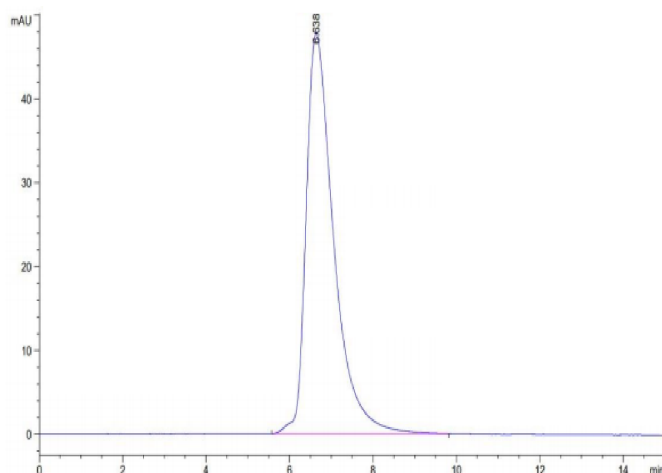
Bis-Tris PAGE



Human HLA-A*01:01&B2M&MAGE-A3 (EVDPIGHLY) Tetramer on Bis-Tris PAGE under Non reducing (N) condition. The purity is greater than 95%.

SEC-HPLC

Assay Data



The purity of Human HLA-A*01:01&B2M&MAGE-A3 (EVDPIGHLY) Tetramer is greater than 95% as determined by SEC-HPLC.