

Biotinylated Human HLA-A\*02:01&B2M&MAGE-A4 (KVLEHVVRV) Monomer Protein



Cat. No. MHC-HM437B

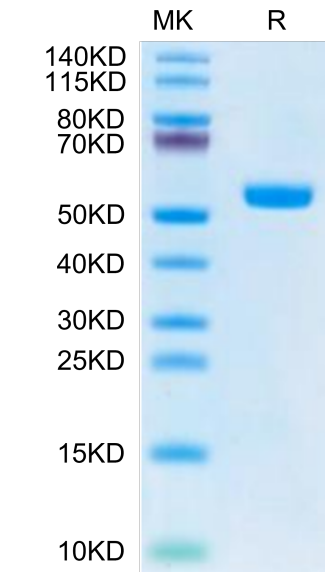
Description	
Source	Recombinant Biotinylated Human HLA-A*02:01&B2M&MAGE-A4 (KVLEHVVRV) Monomer Protein is expressed from HEK293 with His tag and Avi tag at the C-Terminus. It contains Gly25-Thr305 (HLA-A*02:01), Ile21-Met119 (B2M) and KVLEHVVRV peptide.
Accession	A0A140T913(HLA-A*02:01)&P61769(B2M)&KVLEHVVRV
Molecular Weight	The protein has a predicted MW of 50.50 kDa. Due to glycosylation, the protein migrates to 52-62 kDa based on Bis-Tris PAGE result.
Endotoxin	Less than 1 EU per µg by the LAL method.
Purity	> 95% as determined by Bis-Tris PAGE > 95% as determined by HPLC

Formulation and Storage	
Formulation	Lyophilized from 0.22 µm filtered solution in PBS (pH 7.4). Normally 8% trehalose is added as protectant before lyophilization.
Reconstitution	Dissolve the lyophilized protein in distilled water. Please refer to the Certificate of Analysis for detailed instructions.
Storage	-20 to -80°C for 12 months as supplied from date of receipt. -80°C for 3 months after reconstitution. Recommend to aliquot the protein into smaller quantities for optimal storage. Please minimize freeze-thaw cycles.

Background	
MAGE-A4 and MAGE-A8 are type I members of the melanoma associated antigen (MAGE) family. The MAGE family is a large, highly conserved group of proteins that share a common MAGE homology domain. Both MAGE-A4 and MAGE-A8 antigen-presenting peptides can be presented by HLA-A*02:01.	

Assay Data

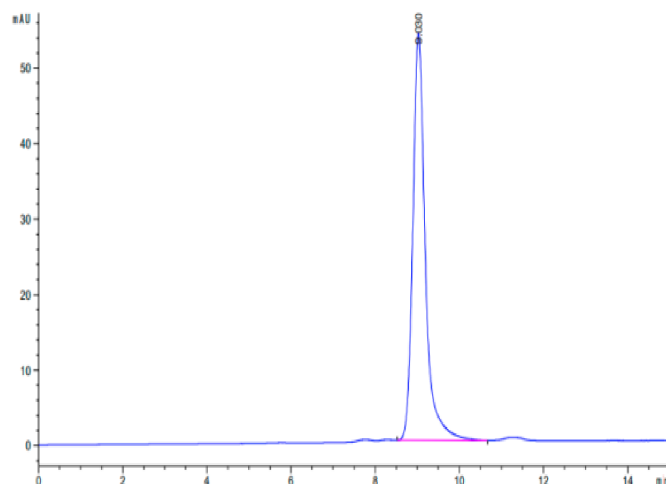
Bis-Tris PAGE



Biotinylated Human HLA-A\*02:01&B2M&MAGE-A4 (KVLEHVVRV) Monomer on Bis-Tris PAGE under reduced condition. The purity is greater than 95%.

SEC-HPLC

Assay Data



The purity of Biotinylated Human HLA-A\*02:01&B2M&MAGE-A4 (KVLEHVVRV) Monomer is greater than 95% as determined by SEC-HPLC.