

Human HLA-A*11:01&B2M&KRAS G12A (VVVGAAGVGK) Monomer Protein



Cat. No. MHC-HM441

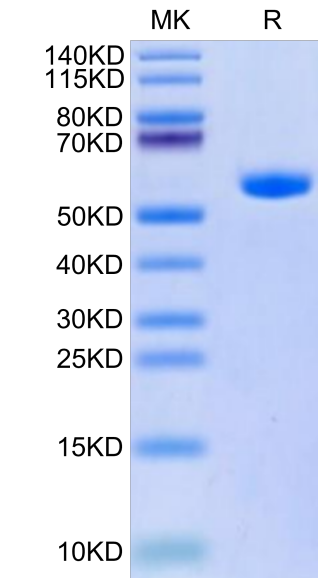
Description	
Source	Recombinant Human HLA-A*11:01&B2M&KRAS G12A (VVVGAAGVGK) Monomer Protein is expressed from HEK293 with His tag and Avi tag at the C-Terminus. It contains Gly25-Thr305(HLA-A*11:01), Ile21-Met119(B2M) and VVVGAAGVGK peptide.
Accession	AAV53343.1(HLA-A*11:01)&&P61769(B2M)&VVVGAAGVGK
Molecular Weight	The protein has a predicted MW of 50.30 kDa. Due to glycosylation, the protein migrates to 52-62 kDa based on Bis-Tris PAGE result.
Endotoxin	Less than 1 EU per µg by the LAL method.
Purity	> 95% as determined by Bis-Tris PAGE > 95% as determined by HPLC

Formulation and Storage	
Formulation	Lyophilized from 0.22µm filtered solution in PBS (pH 7.4). Normally 8% trehalose is added as protectant before lyophilization.
Reconstitution	Dissolve the lyophilized protein in distilled water. Please refer to the Certificate of Analysis for detailed instructions.
Storage	-20 to -80°C for 12 months as supplied from date of receipt.-80°C for 3 months after reconstitution.Recommend to aliquot the protein into smaller quantities for optimal storage. Please minimize freeze-thaw cycles.

Background	
Kirsten rat sarcoma 2 viral oncogene homolog (KRAS) is the most commonly mutated oncogene in human cancer. The developments of many cancers depend on sustained expression and signaling of KRAS, which makes KRAS a high-priority therapeutic target. The virtual screening approach to discover novel KRAS inhibitors and synthetic lethality interactors of KRAS are discussed in detail.	

Assay Data

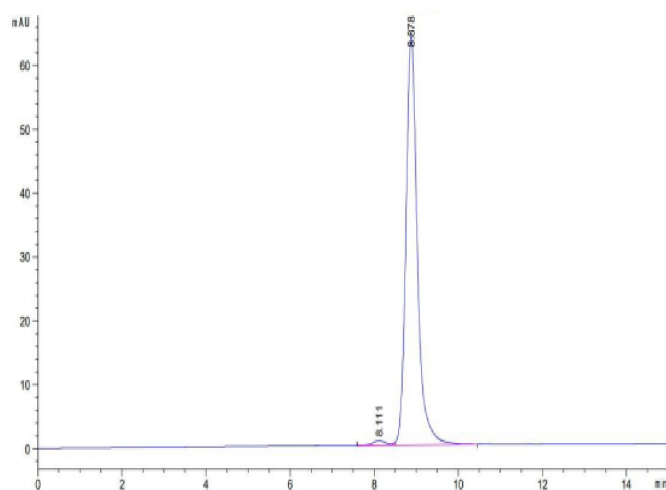
Bis-Tris PAGE



Human HLA-A*11:01&B2M&KRAS G12A (VVVGAAGVGK) Monomer on Bis-Tris PAGE under reduced condition. The purity is greater than 95%.

SEC-HPLC

Assay Data



The purity of Human HLA-A*11:01&B2M&KRAS G12A (VVVGAAGVGK) Monomer is greater than 95% as determined by SEC-HPLC.