

Human HLA-A*02:01&B2M&PRAME (SLLQHLIGL) Tetramer Protein



Cat. No. MHC-HM443T

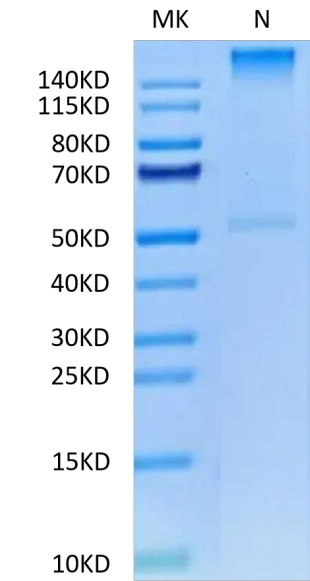
Description	
Source	Recombinant Human HLA-A*02:01&B2M&PRAME (SLLQHLIGL) Tetramer Protein is expressed from HEK293 with His tag and Avi tag at the C-Terminus, tetramer is assembled by biotinylated monomer and streptavidin. It contains Gly25-Thr305 (HLA-A*02:01), Ile21-Met119 (B2M) and SLLQHLIGL peptide.
Accession	A0A140T913 (HLA-A*02:01)&P61769 (B2M)&SLLQHLIGL
Molecular Weight	The protein has a predicted MW of 258 kDa. Due to glycosylation, the protein migrates to 260-265 kDa under Non reducing (N) condition based on Bis-Tris PAGE result.
Endotoxin	Less than 1 EU per µg by the LAL method.
Purity	> 95% as determined by Bis-Tris PAGE > 95% as determined by HPLC

Formulation and Storage	
Formulation	Lyophilized from 0.22 µm filtered solution in PBS (pH 7.4). Normally 8% trehalose is added as protectant before lyophilization.
Reconstitution	Dissolve the lyophilized protein in distilled water. Please refer to the Certificate of Analysis for detailed instructions.
Storage	-20 to -80°C for 12 months as supplied from date of receipt. -80°C for 3 months after reconstitution. Recommend to aliquot the protein into smaller quantities for optimal storage. Please minimize freeze-thaw cycles.

Background	
PRAME (PReferentially expressed Antigen in MELanoma) is a melanoma-associated antigen expressed in cutaneous and ocular melanomas and some other malignant neoplasms, while its expression in normal tissue and benign tumors is limited.	

Assay Data

Bis-Tris PAGE



Human HLA-A*02:01&B2M&PRAME (SLLQHLIGL) Tetramer on Bis-Tris PAGE under Non reducing (N) condition. The purity is greater than 95%.

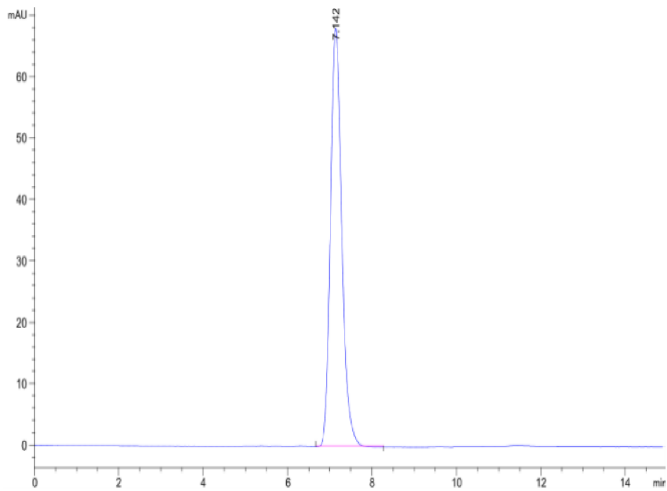
SEC-HPLC

Human HLA-A*02:01&B2M&PRAME (SLLQHLIGL) Tetramer Protein



Cat. No. MHC-HM443T

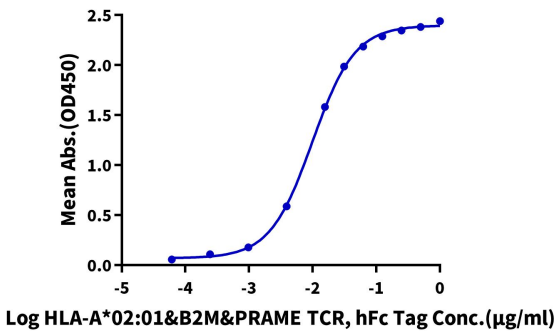
Assay Data



The purity of Human HLA-A*02:01&B2M&PRAME (SLLQHLIGL) Tetramer is greater than 95% as determined by SEC-HPLC.

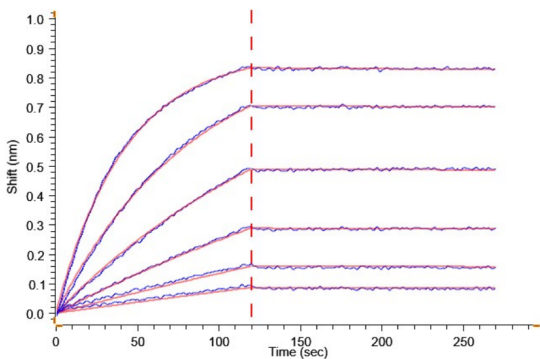
ELISA Data

Human HLA-A*02:01&B2M&PRAME (SLLQHLIGL) Tetramer, His Tag ELISA
0.1µg Human HLA-A*02:01&B2M&PRAME (SLLQHLIGL) Tetramer, His Tag Per Well



Immobilized Human HLA-A*02:01&B2M&PRAME (SLLQHLIGL) Tetramer, His Tag at 1 µg/ml (100 µl/well) on the plate. Dose response curve for HLA-A*02:01&B2M&PRAME TCR with the EC50 of 9.9 ng/ml determined by ELISA.

BLI Data



Loaded HLA-A*02:01&B2M&PRAME TCR, hFc Tag on ProA-Biosensor can bind Human HLA-A*02:01&B2M&PRAME (SLLQHLIGL) Tetramer with an affinity constant of 48.80 pM as determined in BLI assay (Gator® Prime).