

Biotinylated Human HLA-A*02:01&B2M&MAGE-A1 (KVLEYVIKV) Monomer Protein



Cat. No. MHC-HM445B

Description	
Source	Recombinant Biotinylated Human HLA-A*02:01&B2M&MAGE-A1 (KVLEYVIKV) Monomer Protein is expressed from HEK293 with His tag and Avi tag at the C-Terminus. It contains Gly25-Thr305(HLA-A*02:01), Ile21-Met119(B2M) and KVLEYVIKV peptide.
Accession	A0A140T913(HLA-A*02:01)&P61769(B2M)&KVLEYVIKV
Molecular Weight	The protein has a predicted MW of 50.50 kDa. Due to glycosylation, the protein migrates to 53-65 kDa based on Bis-Tris PAGE result.
Endotoxin	Less than 1 EU per µg by the LAL method.
Purity	> 95% as determined by Bis-Tris PAGE > 95% as determined by HPLC

Formulation and Storage	
Formulation	Lyophilized from 0.22 µm filtered solution in PBS (pH 7.4). Normally 8% trehalose is added as protectant before lyophilization.
Reconstitution	Dissolve the lyophilized protein in distilled water. Please refer to the Certificate of Analysis for detailed instructions.
Storage	-20 to -80°C for 12 months as supplied from date of receipt. -80°C for 3 months after reconstitution. Recommend to aliquot the protein into smaller quantities for optimal storage. Please minimize freeze-thaw cycles.

Background	
MAGE-A1 belongs to the chromosome X-clustered genes of cancer-testis antigen family and is normally expressed in the human germ line but is also overexpressed in various tumors.	

Assay Data

Bis-Tris PAGE



Biotinylated Human HLA-A*02:01&B2M&MAGE-A1 (KVLEYVIKV) Monomer on Bis-Tris PAGE under reduced condition. The purity is greater than 95%.

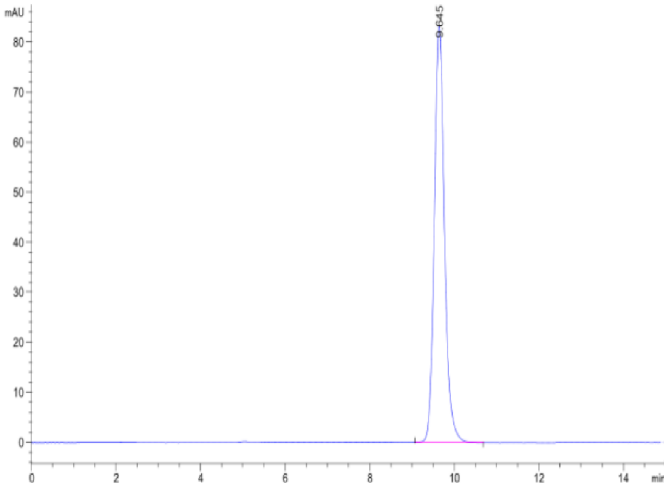
SEC-HPLC

Biotinylated Human HLA-A*02:01&B2M&MAGE-A1 (KVLEYVIKV) Monomer Protein



Cat. No. MHC-HM445B

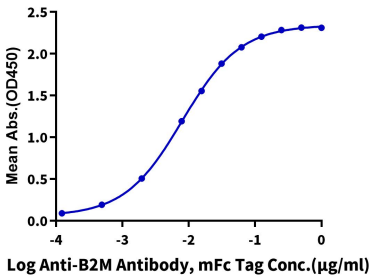
Assay Data



The purity of Biotinylated Human HLA-A*02:01&B2M&MAGE-A1 (KVLEYVIKV) Monomer is greater than 95% as determined by SEC-HPLC.

ELISA Data

Biotinylated Human HLA-A*02:01&B2M&MAGE-A1 (KVLEYVIKV) Monomer, His Tag ELISA
0.05µg Biotinylated Human HLA-A*02:01&B2M&MAGE-A1 (KVLEYVIKV) Monomer, His Tag Per Well



Immobilized Biotinylated Human HLA-A*02:01&B2M&MAGE-A1 (KVLEYVIKV) Monomer, His Tag at 0.5µg/ml (100µl/Well) on streptavidin (5µg/ml) precoated plate. Dose response curve for Anti-B2M Antibody, mFc Tag with the EC50 of 8.0ng/ml determined by ELISA (QC Test).