

Human HLA-A\*02:01&B2M&PRAME (ALYVDSLFFL) Monomer Protein



Cat. No. MHC-HM447

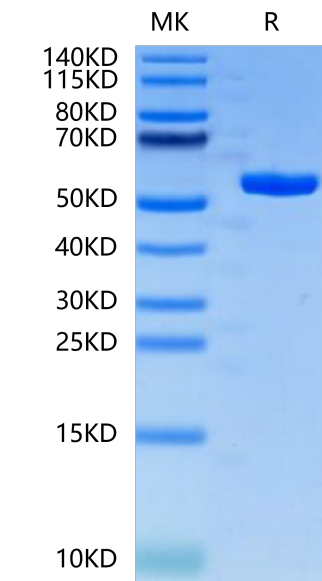
Description	
Source	Recombinant Human HLA-A*02:01&B2M&PRAME (ALYVDSLFFL) Monomer Protein is expressed from HEK293 with His tag and Avi tag at the C-Terminus. It contains Gly25-Thr305(HLA-A*02:01), Ile21-Met119(B2M) and ALYVDSLFFL peptide.
Accession	P79603(HLA-A*02:01)&P61769(B2M)&ALYVDSLFFL
Molecular Weight	The protein has a predicted MW of 50.60 kDa. Due to glycosylation, the protein migrates to 53-63 kDa based on Bis-Tris PAGE result.
Endotoxin	Less than 1 EU per µg by the LAL method.
Purity	> 95% as determined by Bis-Tris PAGE > 95% as determined by HPLC

Formulation and Storage	
Formulation	Lyophilized from 0.22 µm filtered solution in PBS, 100mM Arginine (pH 7.4). Normally 8% trehalose is added as protectant before lyophilization.
Reconstitution	Dissolve the lyophilized protein in distilled water. Please refer to the Certificate of Analysis for detailed instructions.
Storage	-20 to -80°C for 12 months as supplied from date of receipt.-80°C for 3 months after reconstitution.Recommend to aliquot the protein into smaller quantities for optimal storage. Please minimize freeze-thaw cycles.

Background	
PRAME (PReferentially expressed Antigen in MELanoma) is a melanoma-associated antigen expressed in cutaneous and ocular melanomas and some other malignant neoplasms, while its expression in normal tissue and benign tumors is limited.	

Assay Data

Bis-Tris PAGE



Human HLA-A\*02:01&B2M&PRAME (ALYVDSLFFL) Monomer on Bis-Tris PAGE under reduced condition. The purity is greater than 95%.

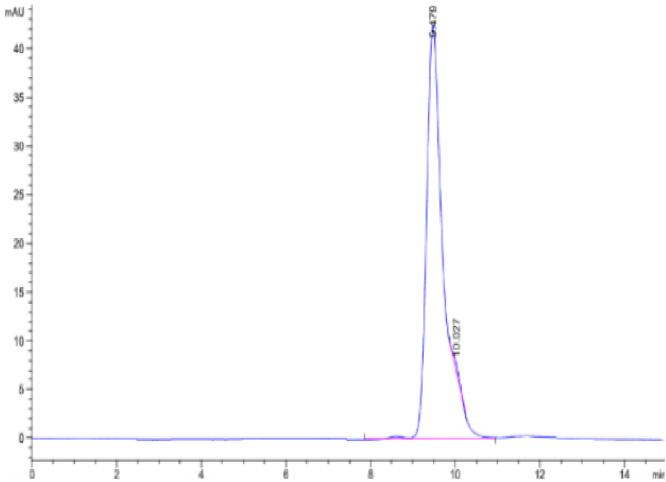
SEC-HPLC

Human HLA-A\*02:01&B2M&PRAME (ALYVDSLFFL) Monomer Protein

Cat. No. MHC-HM447



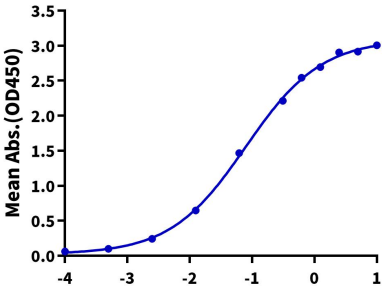
Assay Data



The purity of Human HLA-A\*02:01&B2M&PRAME (ALYVDSLFFL) Monomer is greater than 95% as determined by SEC-HPLC.

ELISA Data

Human HLA-A\*02:01&B2M&PRAME (ALYVDSLFFL) Monomer, His Tag ELISA  
0.5µg Human HLA-A\*02:01&B2M&PRAME (ALYVDSLFFL) Monomer, His Tag Per Well



Immobilized Human HLA-A\*02:01&B2M&PRAME (ALYVDSLFFL) Monomer, His Tag at 5µg/ml (100µl/well) on the plate. Dose response curve for Anti-HLA-A\*02:01&B2M&PRAME (ALYVDSLFFL) Antibody, hFc Tag with the EC50 of 79.5ng/ml determined by ELISA (QC Test).