

Biotinylated Human HLA-A\*03:01&B2M&KRAS G12V (VVGAVGVGK) Monomer Protein



Cat. No. MHC-HM456B

| Description      |   |
|------------------|---|
| Source           | Recombinant Biotinylated Human HLA-A*03:01&B2M&KRAS G12V (VVGAVGVGK) Monomer Protein is expressed from HEK293 with His tag and Avi tag at the C-Terminus<br>It contains Gly25-Thr305 (HLA-A*03:01), Ile21-Met119 (B2M) and VVGAVGVGK peptide. |
| Accession        | NP_002107.3(HLA-A*03:01)&P61769(B2M)&VVGAVGVGK  |
| Molecular Weight | The protein has a predicted MW of 50.09 kDa. Due to glycosylation, the protein migrates to 51-60 kDa based on Bis-Tris PAGE result.   |
| Endotoxin        | Less than 1 EU per µg by the LAL method.  |
| Purity           | > 95% as determined by Bis-Tris PAGE<br>> 95% as determined by HPLC   |

| Formulation and Storage |   |
|-------------------------|---|
| Formulation             | Lyophilized from 0.22 µm filtered solution in PBS (pH 7.4). Normally 8% trehalose is added as protectant before lyophilization.   |
| Reconstitution          | Dissolve the lyophilized protein in distilled water. Please refer to the Certificate of Analysis for detailed instructions.   |
| Storage                 | -20 to -80°C for 12 months as supplied from date of receipt.-80°C for 3 months after reconstitution.Recommend to aliquot the protein into smaller quantities for optimal storage. Please minimize freeze-thaw cycles. |

**Background**

Kirsten rat sarcoma 2 viral oncogene homolog (KRAS) is the most commonly mutated oncogene in human cancer. The developments of many cancers depend on sustained expression and signaling of KRAS, which makes KRAS a high-priority therapeutic target. The virtual screening approach to discover novel KRAS inhibitors and synthetic lethality interactors of KRAS are discussed in detail.

Assay Data

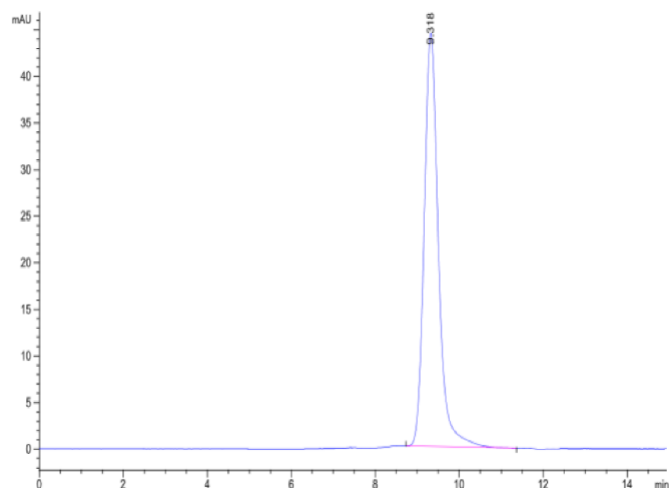
Bis-Tris PAGE



Biotinylated Human HLA-A\*03:01&B2M&KRAS G12V (VVGAVGVGK) Monomer on Bis-Tris PAGE under reduced condition. The purity is greater than 95%.

SEC-HPLC

Assay Data



The purity of Biotinylated Human HLA-A\*03:01&B2M&KRAS G12V (VVGAVGVGK) Monomer is greater than 95% as determined by SEC-HPLC.