

Biotinylated Human HLA-A*02:01&B2M&Survivin (LTLGEFLKL) Monomer Protein



Cat. No. MHC-HM4A1B

Description	
Source	Recombinant Biotinylated Human HLA-A*02:01&B2M&Survivin (LTLGEFLKL) Monomer Protein is expressed from HEK293 with His tag and Avi tag at the C-terminus. It contains Gly25-Thr305(HLA-A*02:01), Ile21-Met119(B2M) and LTLGEFLKL peptide.
Accession	A0A140T913(HLA-A*02:01)&P61769(B2M)<LGEFLKL
Molecular Weight	The protein has a predicted MW of 50.44 kDa. Due to glycosylation, the protein migrates to 52-65 kDa based on Bis-Tris PAGE result.
Endotoxin	Less than 1 EU per µg by the LAL method.
Purity	> 95% as determined by Bis-Tris PAGE > 95% as determined by HPLC

Formulation and Storage	
Formulation	Supplied as 0.22 µm filtered solution in PBS (pH 7.4).
Storage	Valid for 12 months from date of receipt when stored at -80°C. Recommend to aliquot the protein into smaller quantities for optimal storage. Please minimize freeze-thaw cycles.

Background	
Survivin (also known as BIRC5) is an evolutionarily conserved eukaryotic protein that is essential for cell division and can inhibit cell death. Normally it is only expressed in actively proliferating cells, but is upregulated in most, if not all cancers; consequently, it has received significant attention as a potential oncotherapeutic target.	

Assay Data

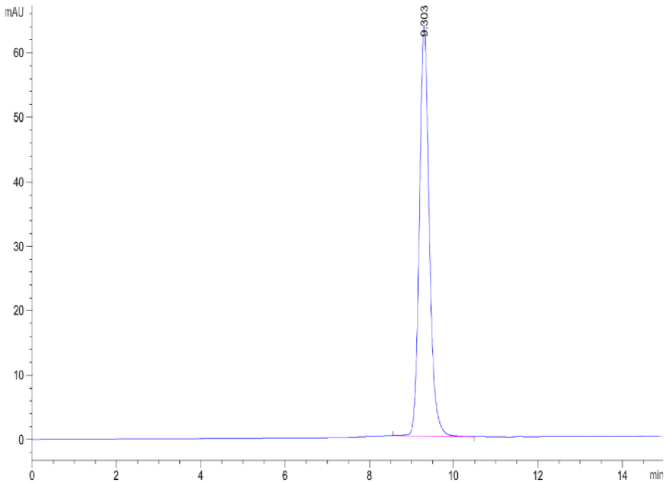
Bis-Tris PAGE



Biotinylated Human HLA-A*02:01&B2M&Survivin (LTLGEFLKL) Monomer on Bis-Tris PAGE under reduced condition. The purity is greater than 95%.

SEC-HPLC

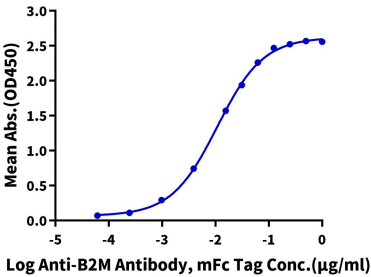
Assay Data



The purity of Biotinylated Human HLA-A*02:01&B2M&Survivin (LTLGEFLKL) Monomer is greater than 95% as determined by SEC-HPLC.

ELISA Data

Biotinylated Human HLA-A*02:01&B2M&Survivin (LTLGEFLKL) Monomer, His Tag ELISA
0.1µg Biotinylated Human HLA-A*02:01&B2M&Survivin (LTLGEFLKL) Monomer, His Tag Per Well



Immobilized Biotinylated Human HLA-A*02:01&B2M&Survivin (LTLGEFLKL) Monomer, His Tag at 1µg/ml (100µl/well) on the streptavidin precoated plate (5µg/ml). Dose response curve for Anti-B2M Antibody, mFc Tag with the EC50 of 10.9ng/ml determined by ELISA (QC Test).