

Human MSLN/Mesothelin Protein



Cat. No. MSL-HM280

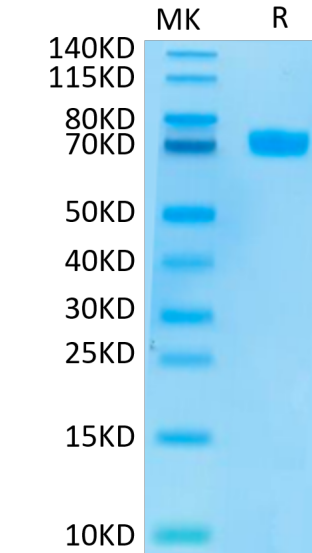
Description	
Source	Recombinant Human MSLN/Mesothelin Protein is expressed from HEK293 with hFc tag at the C-Terminus. It contains Glu296-Gly580.
Accession	Q13421-2
Molecular Weight	The protein has a predicted MW of 59 kDa. Due to glycosylation, the protein migrates to 68-78 kDa based on Bis-Tris PAGE result.
Endotoxin	Less than 1 EU per µg by the LAL method.
Purity	> 95% as determined by Bis-Tris PAGE

Formulation and Storage	
Formulation	Lyophilized from 0.22µm filtered solution in PBS (pH 7.4). Normally 8% trehalose is added as protectant before lyophilization.
Reconstitution	Dissolve the lyophilized protein in distilled water. Please refer to the Certificate of Analysis for detailed instructions.
Storage	-20 to -80°C for 12 months as supplied from date of receipt.-80°C for 3 months after reconstitution.Recommend to aliquot the protein into smaller quantities for optimal storage. Please minimize freeze-thaw cycles.

Background	
Mesothelin, also known as MSLN, is a protein that in humans is encoded by the MSLN gene.Cloning studies showed that the mesothelin gene encodes a precursor protein that is processed to yield mesothelin which is attached to the cell membrane by a glycoposphatidylinositol linkage and a 31-kDa shed fragment named megakaryocyte-potentiating factor (MPF). Although it has been proposed that mesothelin may be involved in cell adhesion, its biological function is not known.A knockout mouse line that lacks mesothelin reproduces and develops normally.	

Assay Data

Bis-Tris PAGE

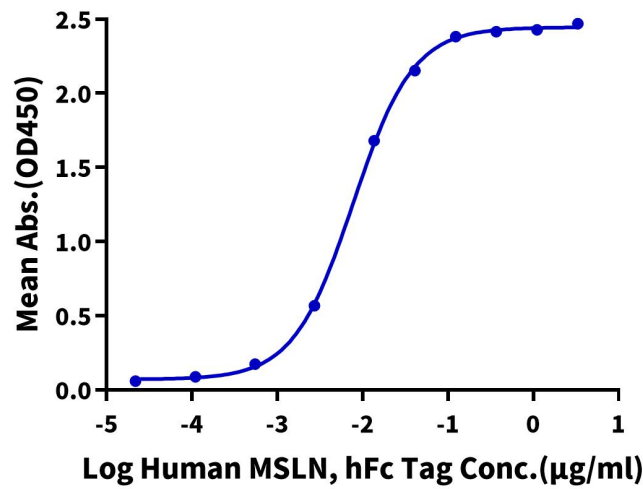


Human MSLN on Bis-Tris PAGE under reduced conditions. The purity is greater than 95%.

ELISA Data

Human MSLN, hFc Tag ELISA

0.1µg Human CA125, His Tag Per Well

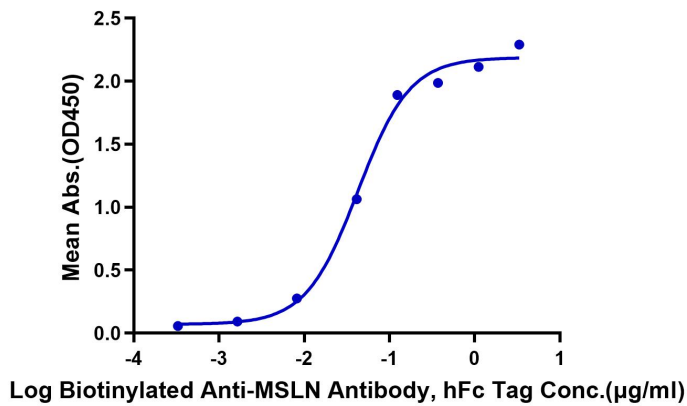


Immobilized Human CA125, His Tag at 1µg/ml (100µl/well) on the plate. Dose response curve for Human MSLN, hFc Tag with the EC50 of 7.8ng/ml determined by ELISA (QC Test).

ELISA Data

Human MSLN, hFc Tag ELISA

0.05µg Human MSLN, hFc Tag Per Well



Immobilized Human MSLN at 0.5µg/ml (100µl/well) on the plate. Dose response curve for Biotinylated Anti-MSLN Antibody, hFc Tag with the EC50 of 44.2ng/ml determined by ELISA.