

Human PSCA Protein



Cat. No. PCA-HM201

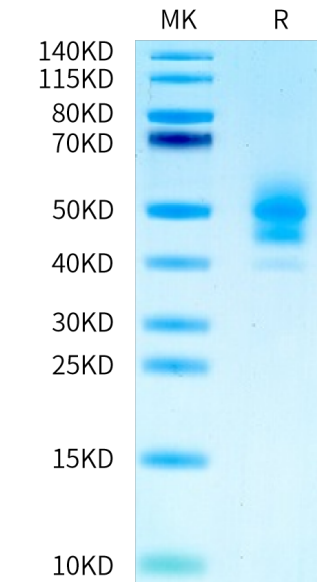
Description	
Source	Recombinant Human PSCA Protein is expressed from HEK293 with hFc tag at the N-Terminus. It contains Leu12-Ser86.
Accession	O43653
Molecular Weight	The protein has a predicted MW of 34.3 kDa. Due to glycosylation, the protein migrates to 40-55 kDa based on Bis-Tris PAGE result.
Endotoxin	Less than 1 EU per µg by the LAL method.
Purity	> 95% as determined by Bis-Tris PAGE > 95% as determined by HPLC

Formulation and Storage	
Formulation	Lyophilized from 0.22µm filtered solution in PBS (pH 7.4). Normally 8% trehalose is added as protectant before lyophilization.
Reconstitution	Dissolve the lyophilized protein in distilled water. Please refer to the Certificate of Analysis for detailed instructions.
Storage	-20 to -80°C for 12 months as supplied from date of receipt. -80°C for 3 months after reconstitution. Recommend to aliquot the protein into smaller quantities for optimal storage. Please minimize freeze-thaw cycles.

Background	
Gastric cancer is a deadly malignancy and is a prognostically unfavorable entity with restricted therapeutic strategies available. Prostate stem cell antigen (PSCA) is a glycosylphosphatidylinositol (GPI)-anchored cell surface protein widely expressed in bladder, prostate, and pancreatic cancers. Existing studies have thoroughly recognized the availability of utilizing anti-PSCA CAR-T cells in the treatment of metastatic prostate cancer and non-small-cell lung cancer.	

Assay Data

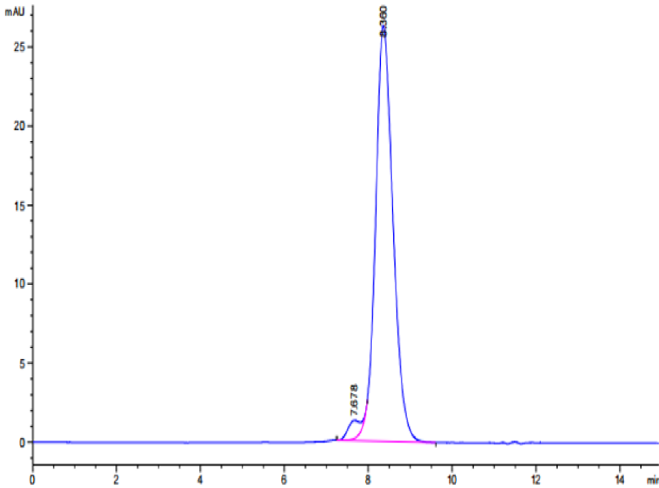
Bis-Tris PAGE



Human PSCA on Bis-Tris PAGE under reduced condition. The purity is greater than 95%.

SEC-HPLC

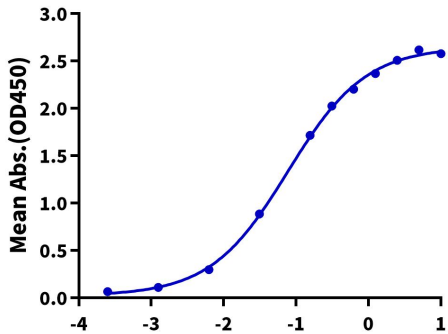
Assay Data



The purity of Human PSCA is greater than 95% as determined by SEC-HPLC.

ELISA Data

Human PSCA, hFc Tag ELISA  
0.2µg Human PSCA, hFc Tag Per Well



Immobilized Human PSCA, hFc Tag at 2µg/ml (100µl/Well) on the plate. Dose response curve for Biotinylated Anti-PSCA Antibody, hFc Tag with the EC50 of 77.4ng/ml determined by ELISA.