

Canine PDGF R beta/CD140b Protein



Cat. No. PGF-DM1RB

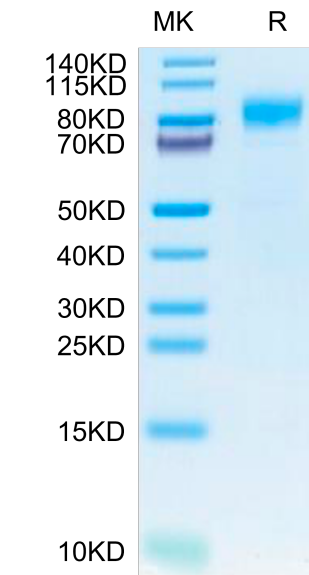
| Description | |
|------------------|--|
| Source | Recombinant Canine PDGF R beta/CD140b Protein is expressed from HEK293 with His tag at the C-Terminus. It contains Gly32-Val532. |
| Accession | Q6QNF3 |
| Molecular Weight | The protein has a predicted MW of 57.25 kDa. Due to glycosylation, the protein migrates to 70-100 kDa based on Bis-Tris PAGE result. |
| Endotoxin | Less than 1 EU per µg by the LAL method. |
| Purity | > 95% as determined by Bis-Tris PAGE > 95% as determined by HPLC |

| Formulation and Storage | |
|-------------------------|---|
| Formulation | Lyophilized from 0.22µm filtered solution in PBS (pH 7.4). Normally 8% trehalose is added as protectant before lyophilization. |
| Reconstitution | Dissolve the lyophilized protein in distilled water. Please refer to the Certificate of Analysis for detailed instructions. |
| Storage | -20 to -80°C for 12 months as supplied from date of receipt. -80°C for 3 months after reconstitution. Recommend to aliquot the protein into smaller quantities for optimal storage. Please minimize freeze-thaw cycles. |

| Background | |
|---|--|
| PDGF is a major serum mitogen that can exist as a homo or hetero-dimeric protein consisting of disulfide-linked PDGF-A and PDGF-B chains. The PDGF-AA,PDGF-BB and PDGF-AB isoforms have been shown to bind to two distinct cell surface PDGF receptors with different affinities. Where as PDGF R alpha binds all three PDGF isoforms with high affinity, PDGF R beta binds PDGF-BB only with high-affinity. PDGF R plays an essential role in blood vessel development by promoting proliferation, migration and recruitment of pericytes and smooth muscle cells to endothelial cells. Plays a role in the migration of vascular smooth muscle cells and the formation of neointima at vascular injury sites. | |

Assay Data

Bis-Tris PAGE



Canine PDGF R beta on Bis-Tris PAGE under reduced condition. The purity is greater than 95%.

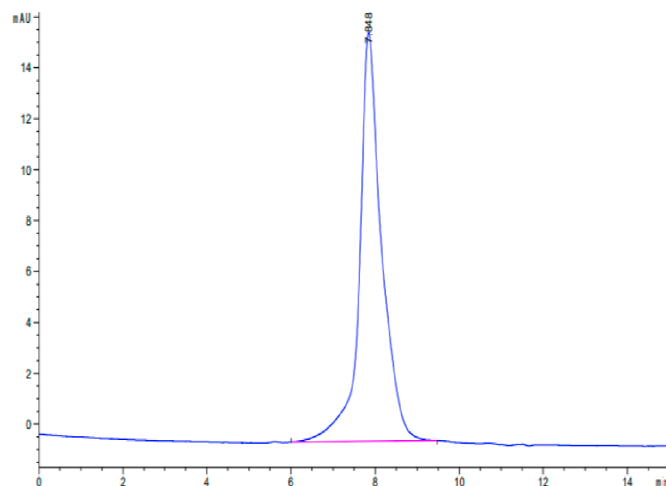
SEC-HPLC

Canine PDGF R beta/CD140b Protein

Cat. No. PGF-DM1RB

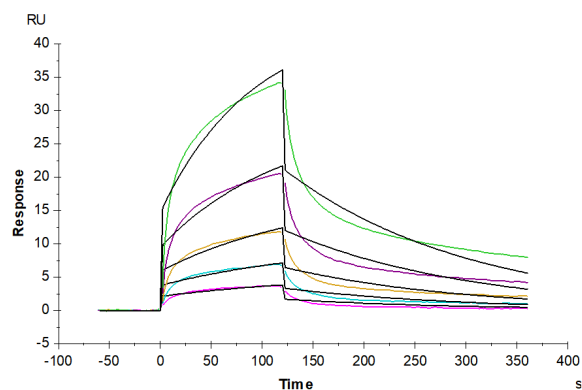


Assay Data



The purity of Canine PDGF R beta is greater than 95% as determined by SEC-HPLC.

SPR Data



Human PDGFB, His Tag immobilized on CM5 Chip can bind Canine PDGF R beta, His Tag with an affinity constant of 0.203 μM as determined in SPR assay (Biacore T200).