

## Mouse PLA2G1B Protein

Cat. No. PLA-MM21B



### Description

Source	Recombinant Mouse PLA2G1B Protein is expressed from HEK293 with hFc tag at the C-Terminus.
	It contains Ala23-Cys146.
Accession	Q9Z0Y2
Molecular Weight	The protein has a predicted MW of 40.9 kDa. Due to glycosylation, the protein migrates to 48-50 kDa based on Bis-Tris PAGE result.
Endotoxin	Less than 1 EU per µg by the LAL method.
Purity	> 95% as determined by Bis-Tris PAGE
	> 95% as determined by HPLC

### Formulation and Storage

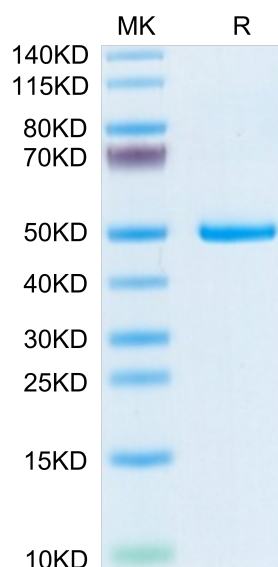
Formulation	Lyophilized from 0.22µm filtered solution in PBS (pH 7.4). Normally 8% trehalose is added as protectant before lyophilization.
Reconstitution	Dissolve the lyophilized protein in distilled water. Please refer to the Certificate of Analysis for detailed instructions.
Storage	-20 to -80°C for 12 months as supplied from date of receipt. -80°C for 3 months after reconstitution. Recommend to aliquot the protein into smaller quantities for optimal storage. Please minimize freeze-thaw cycles.

### Background

Phospholipase A2 (PLA2) plays crucial roles in diverse cellular responses, including phospholipid digestion and metabolism, host defense and signal transduction. PLA2 provides precursors for generation of eicosanoids, such as prostaglandins (PGs) and leukotrienes (LTs), when the cleaved fatty acid is arachidonic acid, platelet-activating factor (PAF) when the sn-1 position of the phosphatidylcholine contains an alkyl ether linkage and some bioactive lysophospholipids, such as lysophosphatidic acid (lysoPA).

### Assay Data

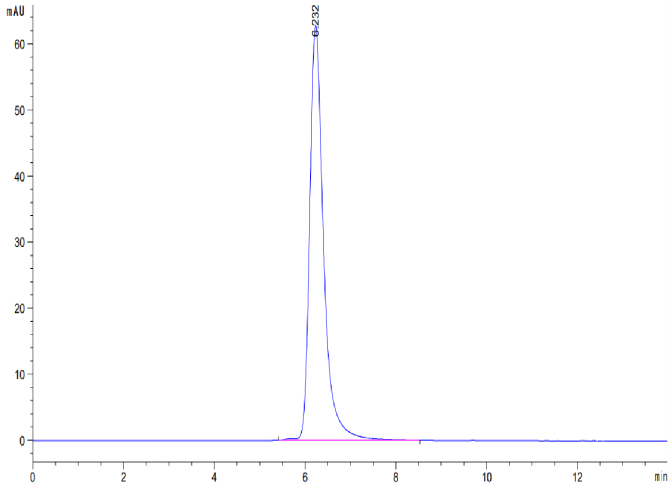
#### Bis-Tris PAGE



Mouse PLA2G1B on Bis-Tris PAGE under reduced condition. The purity is greater than 95%.

#### SEC-HPLC

Assay Data



The purity of Mouse PLA2G1B is greater than 95% as determined by SEC-HPLC.