

Human PTH Protein

Cat. No. PTH-HM201



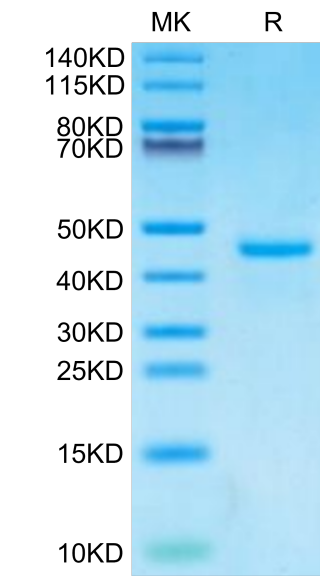
| Description      |   |
|------------------|---|
| Source           | Recombinant Human PTH Protein is expressed from HEK293 with hFc tag at the N-Terminus.<br>It contains Ser32-Gln115.                 |
| Accession        | P01270  |
| Molecular Weight | The protein has a predicted MW of 34.95 kDa. Due to glycosylation, the protein migrates to 40-50 kDa based on Bis-Tris PAGE result. |
| Endotoxin        | Less than 1 EU per µg by the LAL method.  |
| Purity           | > 95% as determined by Bis-Tris PAGE<br>> 95% as determined by HPLC   |

| Formulation and Storage |   |
|-------------------------|---|
| Formulation             | Lyophilized from 0.22µm filtered solution in PBS (pH 7.4). Normally 8% trehalose is added as protectant before lyophilization.  |
| Reconstitution          | Dissolve the lyophilized protein in distilled water. Please refer to the Certificate of Analysis for detailed instructions.   |
| Storage                 | -20 to -80°C for 12 months as supplied from date of receipt. -80°C for 3 months after reconstitution. Recommend to aliquot the protein into smaller quantities for optimal storage. Please minimize freeze-thaw cycles. |

| Background   |  |
|--|--|
| Parathyroid hormone (PTH) is an 84-amino-acid peptide hormone that is secreted by the parathyroid gland. It has different administration modes in bone tissue through which it promotes bone formation (intermittent administration) and bone resorption (continuous administration) and has great potential for application in sbone defect repair. |  |

Assay Data

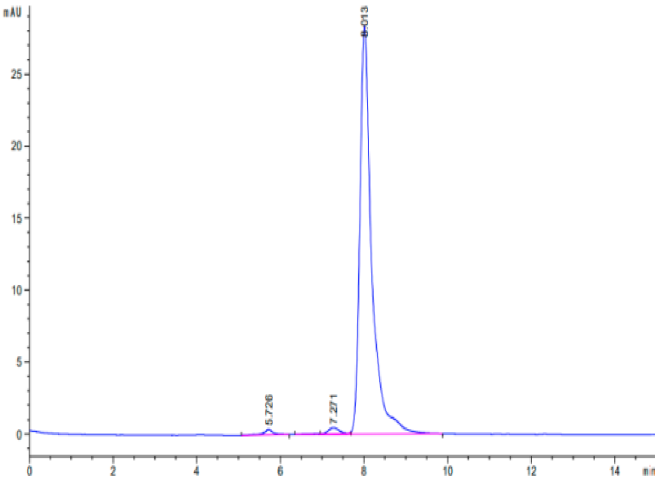
Bis-Tris PAGE



Human PTH on Bis-Tris PAGE under reduced condition. The purity is greater than 95%.

SEC-HPLC

Assay Data



The purity of Human PTH is greater than 95% as determined by SEC-HPLC.