

Cynomolgus Semaphorin 4D/SEMA4D/CD100 Protein



Cat. No. SEM-CM14D

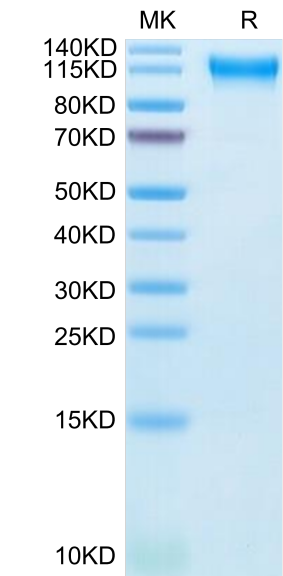
Description	
Source	Recombinant Cynomolgus Semaphorin 4D/SEMA4D/CD100 Protein is expressed from HEK293 with His tag at the C-Terminus. It contains Phe24-Arg734.
Accession	A0A2K5TZC9
Molecular Weight	The protein has a predicted MW of 80.1 kDa. Due to glycosylation, the protein migrates to 90-120 kDa based on Bis-Tris PAGE result.
Endotoxin	Less than 1 EU per µg by the LAL method.
Purity	> 95% as determined by Bis-Tris PAGE > 95% as determined by HPLC

Formulation and Storage	
Formulation	Lyophilized from 0.22µm filtered solution in PBS (pH 7.4). Normally 8% trehalose is added as protectant before lyophilization.
Reconstitution	Dissolve the lyophilized protein in distilled water. Please refer to the Certificate of Analysis for detailed instructions.
Storage	-20 to -80°C for 12 months as supplied from date of receipt. -80°C for 3 months after reconstitution. Recommend to aliquot the protein into smaller quantities for optimal storage. Please minimize freeze-thaw cycles.

Background	
Semaphorin 4D (Sema4D) is a multifunctional protein widely expressed in an organism that plays an important role in the control of many physiological and pathological processes, including immunoregulation, neurogenesis, angiogenesis, and tumor progression.	

Assay Data

Bis-Tris PAGE



Cynomolgus Semaphorin 4D on Bis-Tris PAGE under reduced condition. The purity is greater than 95%.

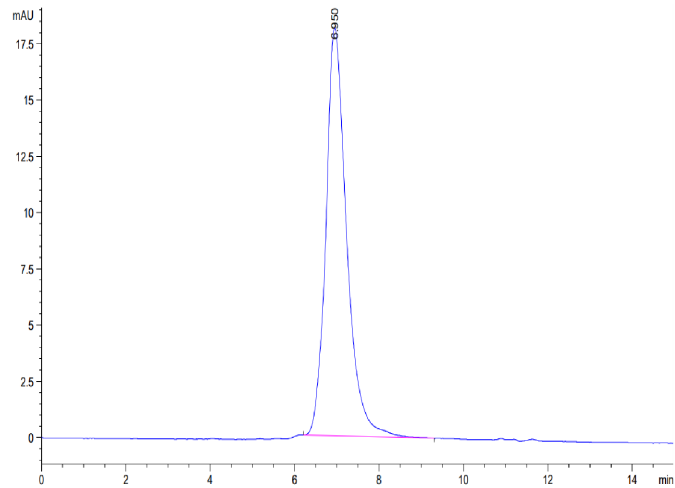
SEC-HPLC

Cynomolgus Semaphorin 4D/SEMA4D/CD100 Protein

Cat. No. SEM-CM14D



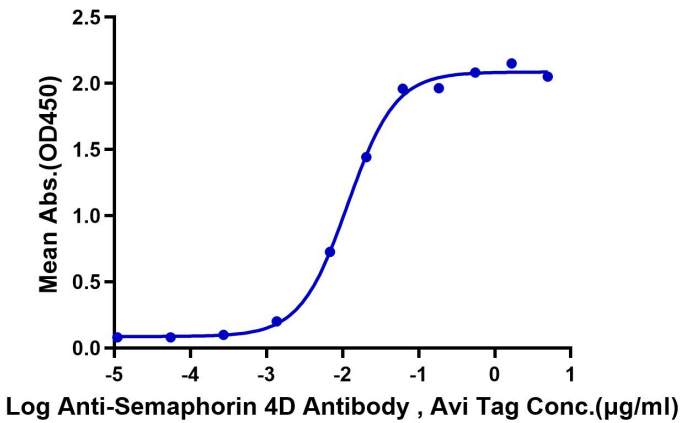
Assay Data



The purity of Cynomolgus Semaphorin 4D is greater than 95% as determined by SEC-HPLC.

ELISA Data

Cynomolgus Semaphorin 4D, His Tag ELISA  
0.2µg Cynomolgus Semaphorin 4D, His Tag Per Well



Immobilized Cynomolgus Semaphorin 4D, His Tag at 2µg/ml (100µl/well) on the plate. Dose response curve for Anti-Semaphorin 4D Antibody, hFc Tag with the EC50 of 11.8ng/ml determined by ELISA.