

Human Semaphorin 4D/SEMA4D/CD100 Protein



Cat. No. SEM-HM44D

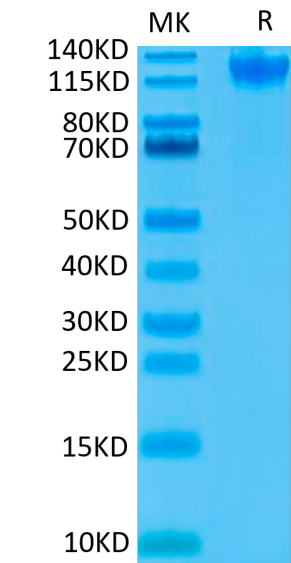
Description	
Source	Recombinant Human Semaphorin 4D/SEMA4D/CD100 Protein is expressed from HEK293 with His tag and Avi tag at the C-Terminus. It contains Met22-Arg734.
Accession	Q92854-1
Molecular Weight	The protein has a predicted MW of 82.1 kDa. Due to glycosylation, the protein migrates to 115-140 kDa based on Bis-Tris PAGE result.
Endotoxin	Less than 1 EU per µg by the LAL method.
Purity	> 95% as determined by Bis-Tris PAGE > 95% as determined by HPLC

Formulation and Storage	
Formulation	Lyophilized from 0.22µm filtered solution in PBS (pH 7.4). Normally 8% trehalose is added as protectant before lyophilization.
Reconstitution	Dissolve the lyophilized protein in distilled water. Please refer to the Certificate of Analysis for detailed instructions.
Storage	-20 to -80°C for 12 months as supplied from date of receipt.-80°C for 3 months after reconstitution.Recommend to aliquot the protein into smaller quantities for optimal storage. Please minimize freeze-thaw cycles.

Background	
Semaphorin 4D (Sema4D) is a multifunctional protein widely expressed in an organism that plays an important role in the control of many physiological and pathological processes, including immunoregulation, neurogenesis, angiogenesis, and tumor progression.	

Assay Data

Bis-Tris PAGE



Human Semaphorin 4D on Bis-Tris PAGE under reduced condition. The purity is greater than 95%.

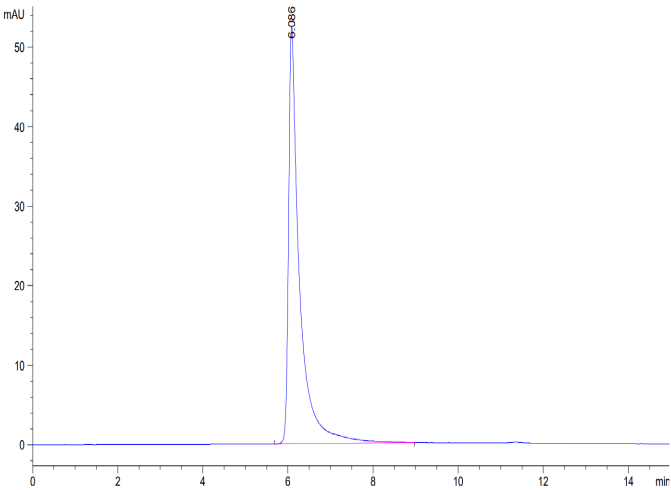
SEC-HPLC

Human Semaphorin 4D/SEMA4D/CD100 Protein

Cat. No. SEM-HM44D



Assay Data

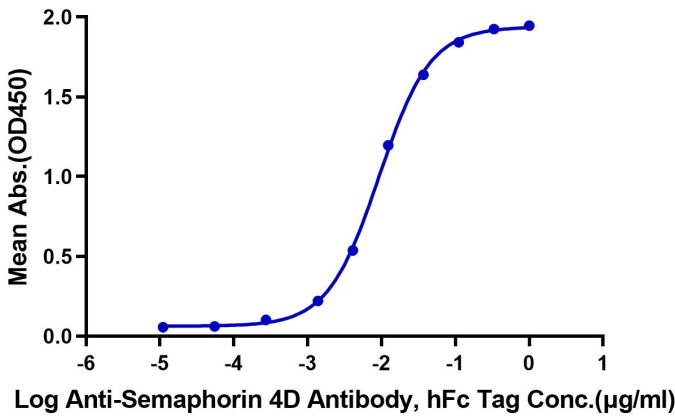


The purity of Human Semaphorin 4D is greater than 95% as determined by SEC-HPLC.

ELISA Data

Human Semaphorin 4D, His Tag ELISA

0.1µg Human Semaphorin 4D, His Tag Per Well



Immobilized Human Semaphorin 4D, His Tag at 1µg/ml (100µl/well) on the plate. Dose response curve for Anti-Semaphorin 4D Antibody , hFc Tag with the EC50 of 9.3ng/ml determined by ELISA.