

Human Siglec-4a/MAG Protein



Cat. No. SIG-HM24A

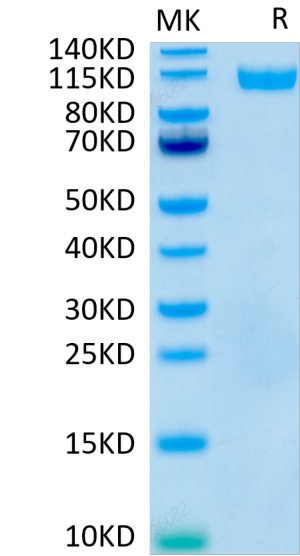
Description	
Source	Recombinant Human Siglec-4a/MAG Protein is expressed from HEK293 with hFc tag at the C-Terminus. It contains Gly20-Pro516.
Accession	P20916
Molecular Weight	The protein has a predicted MW of 81.4 kDa. Due to glycosylation, the protein migrates to 100-115 kDa based on Bis-Tris PAGE result.
Endotoxin	Less than 1 EU per µg by the LAL method.
Purity	> 95% as determined by Bis-Tris PAGE > 95% as determined by HPLC

Formulation and Storage	
Formulation	Supplied as 0.22µm filtered solution in PBS, 500mM Nacl (pH 7.4).
Storage	Valid for 12 months from date of receipt when stored at -80°C. Recommend to aliquot the protein into smaller quantities for optimal storage. Please minimize freeze-thaw cycles.

Background	
Siglec-4a, also known as Myelin-Associated Glycoprotein (MAG), is a type I transmembrane glycoprotein belonging to the Siglec family, a subgroup of the Ig superfamily. Adhesion molecule that mediates interactions between myelinating cells and neurons by binding to neuronal sialic acid-containing gangliosides and to the glycoproteins RTN4R and RTN4RL2.	

Assay Data

Bis-Tris PAGE



Human Siglec-4a on Bis-Tris PAGE under reduced conditions. The purity is greater than 95%.

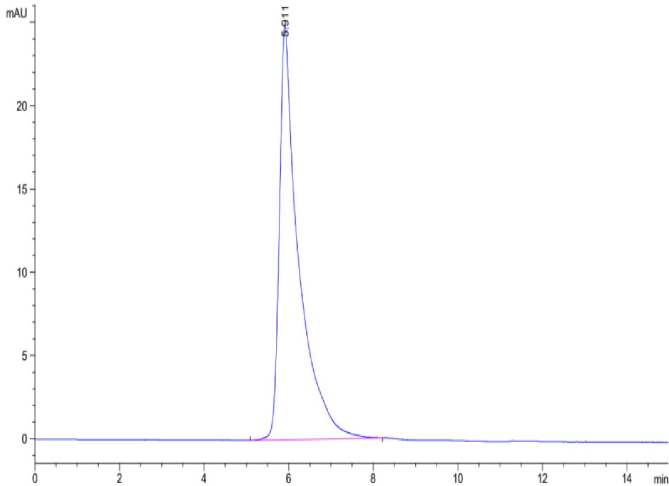
SEC-HPLC

Human Siglec-4a/MAG Protein

Cat. No. SIG-HM24A



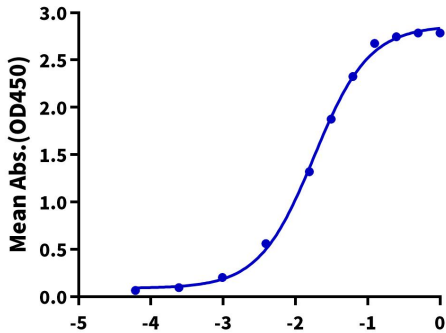
Assay Data



The purity of Human Siglec-4a is greater than 95% as determined by SEC-HPLC.

ELISA Data

Human Siglec-4a, hFc Tag ELISA
0.1µg Human Siglec-4a, hFc Tag Per Well



Immobilized Human Siglec-4a, hFc Tag at 1µg/ml (100µl/well) on the plate. Dose response curve for Biotinylated Anti-Siglec-4a Antibody, hFc Tag with the EC50 of 18.0ng/ml determined by ELISA (QC Test).