

Human SLAMF7/CRACC/CD319 Protein



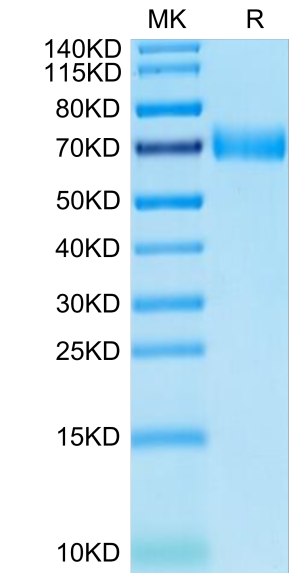
Cat. No. SMF-HM207

Description	
Source	Recombinant Human SLAMF7/CRACC/CD319 Protein is expressed from HEK293 with hFc tag at the C-Terminus. It contains Ser23-Met226.
Accession	Q9NQ25-1
Molecular Weight	The protein has a predicted MW of 49.2 kDa. Due to glycosylation, the protein migrates to 68-80 kDa based on Bis-Tris PAGE result.
Endotoxin	Less than 1 EU per µg by the LAL method.
Purity	> 95% as determined by Bis-Tris PAGE > 95% as determined by HPLC

Formulation and Storage	
Formulation	Lyophilized from 0.22µm filtered solution in PBS (pH 7.4). Normally 8% trehalose is added as protectant before lyophilization.
Reconstitution	Dissolve the lyophilized protein in distilled water. Please refer to the Certificate of Analysis for detailed instructions.
Storage	-20 to -80°C for 12 months as supplied from date of receipt. -80°C for 3 months after reconstitution. Recommend to aliquot the protein into smaller quantities for optimal storage. Please minimize freeze-thaw cycles.

Background	
	CD2-like receptor activating cytotoxic cells (CRACC), also known as CS1, novel Ly9, SLAMF7, and CD319, is a 65-75 kDa type I transmembrane glycoprotein in the SLAM subgroup of the CD2 family. Self-ligand receptor of the signaling lymphocytic activation molecule (SLAM) family. SLAM receptors triggered by homo- or heterotypic cell-cell interactions are modulating the activation and differentiation of a wide variety of immune cells and thus are involved in the regulation and interconnection of both innate and adaptive immune response.

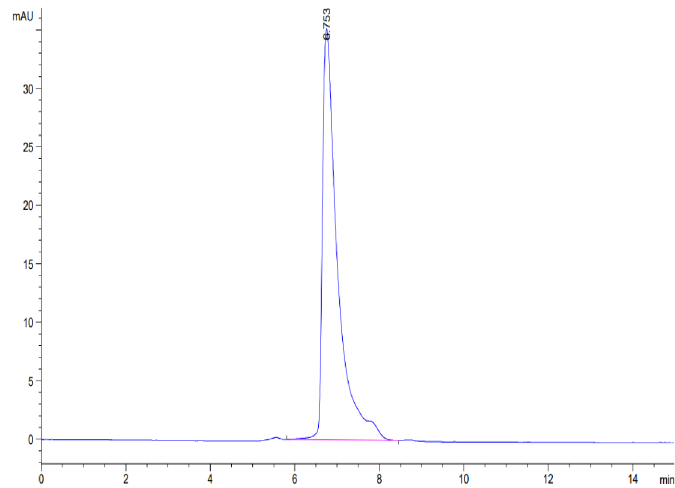
Assay Data	
Bis-Tris PAGE	



Human SLAMF7 on Bis-Tris PAGE under reduced condition. The purity is greater than 95%.

SEC-HPLC

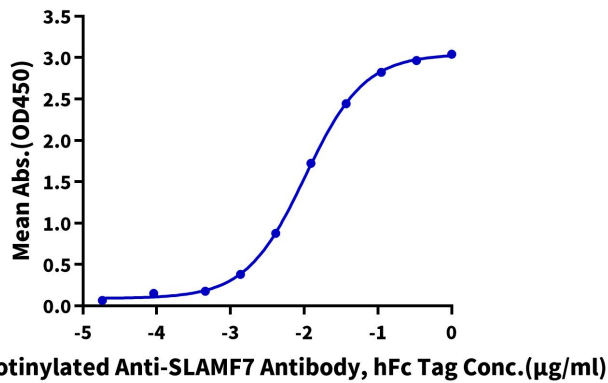
Assay Data



The purity of Human SLAMF7 is greater than 95% as determined by SEC-HPLC.

ELISA Data

Human SLAMF7, His Tag ELISA
0.05µg Human SLAMF7, His Tag Per Well



Immobilized Human SLAMF7, hFc Tag at 0.5µg/ml (100µl/Well) on the plate. Dose response curve for Biotinylated Anti-SLAMF7 Antibody, hFc Tag with the EC50 10.4ng/ml determined by ELISA.