

Cynomolgus TIM-1/HAVCR1 Protein



Cat. No. TIM-CM101

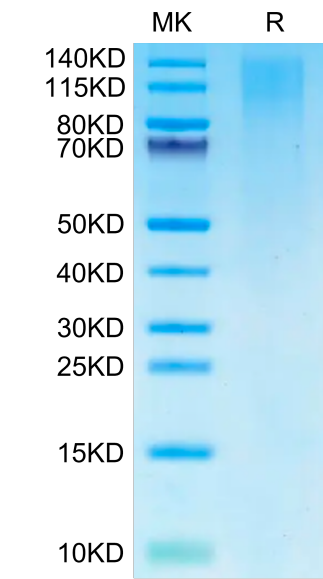
Description	
Source	Recombinant Cynomolgus TIM-1/HAVCR1 Protein is expressed from HEK293 with His tag at the C-Terminus. It contains Val23-Gly342.
Accession	A0A2K5WXJ6
Molecular Weight	The protein has a predicted MW of 35.25 kDa. Due to glycosylation, the protein migrates to 100-150 kDa based on Bis-Tris PAGE result.
Endotoxin	Less than 1 EU per µg by the LAL method.
Purity	> 95% as determined by Bis-Tris PAGE > 95% as determined by HPLC

Formulation and Storage	
Formulation	Lyophilized from 0.22µm filtered solution in PBS (pH 7.4). Normally 8% trehalose is added as protectant before lyophilization.
Reconstitution	Dissolve the lyophilized protein in distilled water. Please refer to the Certificate of Analysis for detailed instructions.
Storage	-20 to -80°C for 12 months as supplied from date of receipt. -80°C for 3 months after reconstitution. Recommend to aliquot the protein into smaller quantities for optimal storage. Please minimize freeze-thaw cycles.

Background	
Kidney injury molecule 1 (KIM-1, also known as TIM-1) is markedly upregulated in the proximal tubule after injury and is maladaptive when chronically expressed. KIM-1-mediated epithelial cell phagocytosis of apoptotic cells protects the kidney after acute injury by downregulating innate immunity and inflammation.	

Assay Data

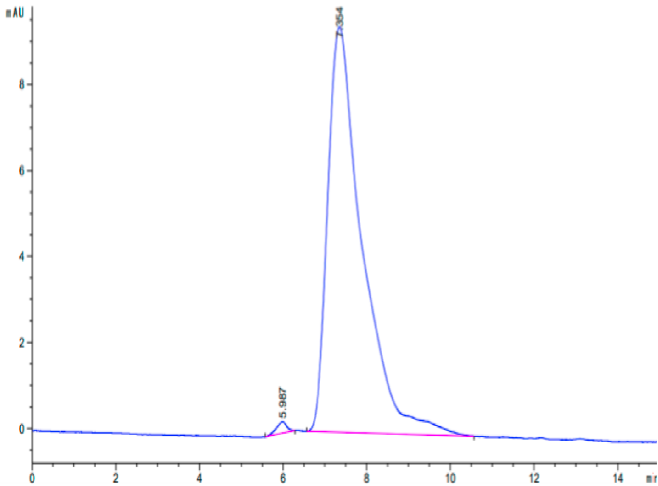
Bis-Tris PAGE



Cynomolgus TIM-1 on Bis-Tris PAGE under reduced condition. The purity is greater than 95%.

SEC-HPLC

Assay Data



The purity of Cynomolgus TIM-1 is greater than 95% as determined by SEC-HPLC.