

Human TLR3 Protein

Cat. No. TLR-HM103



Description

Source	Recombinant Human TLR3 Protein is expressed from HEK293 with His tag at the C-Terminus.
	It contains Ser23-Glu703.
Accession	Q6PCD4
Molecular Weight	The protein has a predicted MW of 78.7 kDa. Due to glycosylation, the protein migrates to 90-115 kDa based on Bis-Tris PAGE result.
Endotoxin	Less than 1 EU per µg by the LAL method.
Purity	> 95% as determined by Bis-Tris PAGE
	> 95% as determined by HPLC

Formulation and Storage

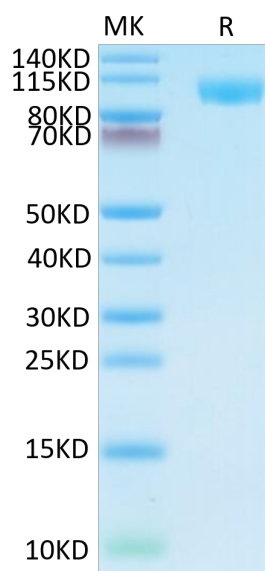
Formulation	Lyophilized from 0.22µm filtered solution in PBS (pH 7.4). Normally 8% trehalose is added as protectant before lyophilization.
Reconstitution	Dissolve the lyophilized protein in distilled water. Please refer to the Certificate of Analysis for detailed instructions.
Storage	-20 to -80°C for 12 months as supplied from date of receipt. -80°C for 3 months after reconstitution. Recommend to aliquot the protein into smaller quantities for optimal storage. Please minimize freeze-thaw cycles.

Background

TLR3 is expressed in the central nervous system (CNS), where it is required to control HSV-1, which spreads from the epithelium to the CNS via cranial nerves. TLR3 is also expressed in epithelial and dendritic cells, which apparently use TLR3-independent pathways to prevent further dissemination of HSV-1 and to provide resistance to other pathogens in TLR3-deficient patients. Human TLR3 appears to be redundant in host defense to most microbes but is vital for natural immunity to HSV-1 in the CNS, which suggests that neurotropic viruses have contributed to the evolutionary maintenance of TLR3.

Assay Data

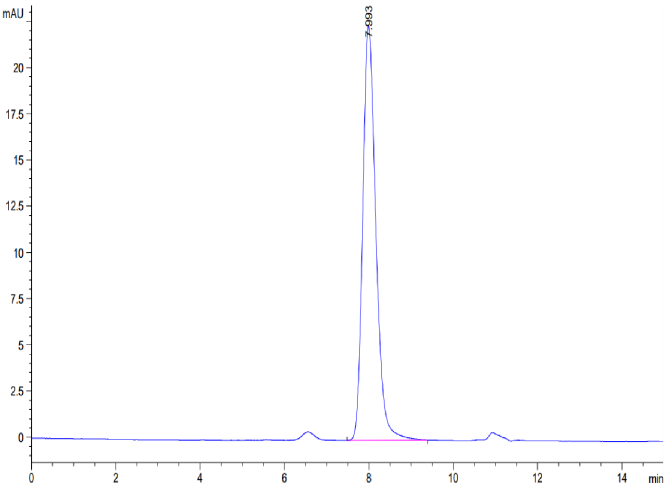
Bis-Tris PAGE



Human TLR3 on Bis-Tris PAGE under reduced condition. The purity is greater than 95%.

SEC-HPLC

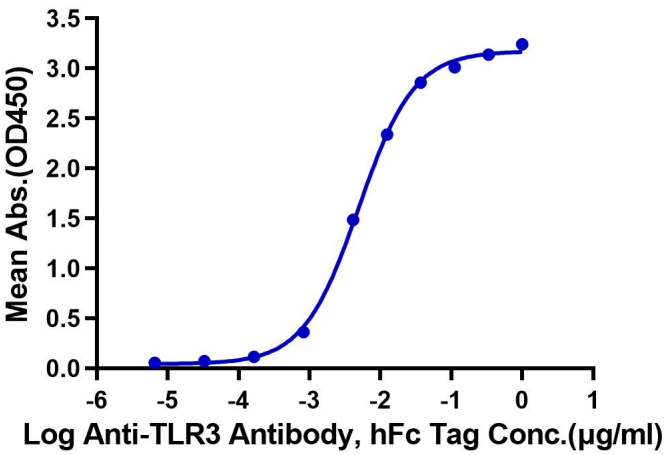
Assay Data



The purity of Human TLR3 is greater than 95% as determined by SEC-HPLC.

ELISA Data

Human TLR3, His Tag ELISA
0.05µg Human TLR3, His Tag Per Well



Immobilized Human TLR3, His Tag at 0.5µg/ml (100µl/well) on the plate. Dose response curve for Anti-TLR3 Antibody, hFc Tag with the EC50 of 4.9ng/ml determined by ELISA.