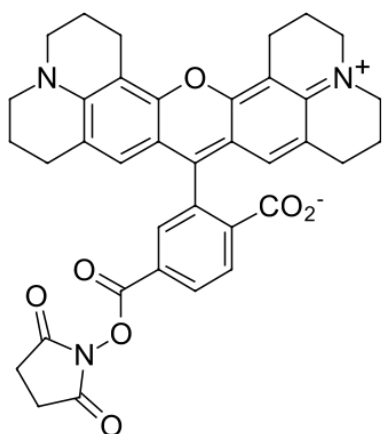


ROX NHS ester, 6-isomer

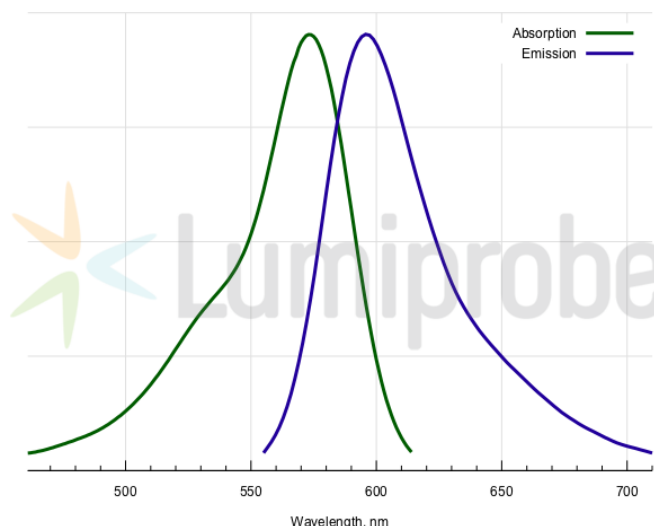
<http://www.lumiprobe.com/p/6-rox-nhs-ester>

ROX (Rhodamine X, R101) is a highly fluorescent, and photostable rhodamine dye for various applications. ROX labeled oligonucleotide probes are often used in qPCR, and qPCR instruments have ROX channel.

This is reactive dye for the labeling of amino-groups in peptides, proteins, and amino-oligonucleotides. Pure single isomer.



Absorption and emission spectra of ROX dye



Absorption and emission spectra of ROX dye

General properties

Appearance:	dark crimson powder
Mass spec M+ increment:	516.2
Molecular weight:	631.67
CAS number:	117491-83-5; 1890922-83-4; 216699-36-4
Molecular formula:	C ₃₇ H ₃₃ N ₃ O ₇
Solubility:	good in polar organic solvents (DMF, DMSO), low in water
Quality control:	NMR ¹ H, HPLC-MS (80+%, balance mostly free carboxylic acid)
Storage conditions:	Storage: 12 months after receipt at -20°C in the dark. Transportation: at room temperature for up to 3 weeks. Avoid prolonged exposure to light. Desiccate.
Legal statement:	This Product is offered and sold for research purposes only. It has not been tested for safety and efficacy in food, drug, medical device, cosmetic, commercial or any other use. Supply does not express or imply authorization to use for any other purpose, including, without limitation, in vitro diagnostic purposes, in the manufacture of food or pharmaceutical products, in medical devices or in cosmetic products.

Spectral properties

Excitation/absorption maximum, nm:	570
ε, L·mol ⁻¹ ·cm ⁻¹ :	88000
Emission maximum, nm:	591
Fluorescence quantum yield:	1.0
CF ₂₆₀ :	0.62
CF ₂₈₀ :	0.49