

**Product Name** : ALDH1A inhibitor 673A

**Synonyms** : ALDH1Ai 673A

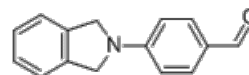
**Cat No.** : M10366

**CAS Number** : 109437-62-9

**Molecular Formula** : C<sub>15</sub>H<sub>13</sub>NO

**Formula Weight** : 223.28

**Chemical Name** : 4-(isoindolin-2-yl)benzaldehyde



**Description** : ALDH1A inhibitor 673A (ALDH1Ai 673A) is a potent, selective, pan-ALDH1A inhibitor with IC<sub>50</sub> of 246, 230 and 348 nM for ALDH1A1, ALDH1A2 and ALDH1A3, respectively; shows no significant activity against ALDH2 (IC<sub>50</sub> 14 mM) or numerous other ALDH family members; ALDH1Ai 673A preferentially kills CD133+ ovarian cancer stem-like cells (CSCs), induces necroptotic CSC death, mediated, in part, by the induction of mitochondrial uncoupling proteins (UCPs) and reduction in oxidative phosphorylation; ALDH1Ai 673A is highly synergistic with chemotherapy, reducing tumor initiation capacity and increasing tumor eradication in vivo.

**Pathway** : Metabolic Enzyme/Protease

**Target** : ALDH

**Receptor** : ALDH

**Solubility** : —

**SMILES** : C1C2=CC=CC=C2CN1C3=CC=C(C=C3)C=O

**Storage** : (-20°C)

**Stability** : ≥ 2 years

**Reference** :

1. Chefetz I, et al. Cell Rep. 2019 Mar 12;26(11):3061-3075.e6.