

Product Name : MM-102

Synonyms : MM102;MM 102

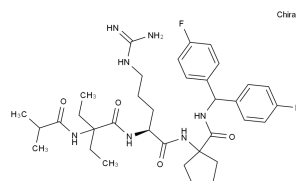
Cat No. : M11741

CAS Number : 1417329-24-8

Molecular Formula : C₃₅H₄₉F₂N₇O₄

Formula Weight : 669.80

Chemical Name : Cyclopentanecarboxamide, 1-[[[(2S)-5-[(aminoiminomethyl)amino]-2-[[2-ethyl-2-[(2-methyl-1-oxopropyl)amino]-1-oxobutyl]amino]-1-oxopentyl]amino]-N-[bis(4-fluorophenyl)methyl]-



Description : A high-affinity, small-molecule peptidomimetic inhibitor of MLL1/WDR5 protein-protein interaction with K_i of 2.4 nM; effectively decreases the expression of HoxA9 and Meis-1; specifically inhibits cell growth and induces apoptosis in leukemia cells harboring MLL1 fusion proteins.

Pathway : Chromatin/Epigenetic

Target : HMTase

Receptor : MLL1

Solubility : 10 mM in DMSO

SMILES : O=C(C1(NC([C@@H](NC(C(NC(C(C)C)=O)(CC)CC)=O)CCC/N=C(N)/N)=O)CCCC1)NC(C2=CC=C(F)C=C2)C3=CC=C(F)C=C3

Storage : (-20°C)

Stability : ≥ 2 years

Reference :

1. Karatas H, et al. J Am Chem Soc. 2013 Jan 16;135(2):669-82.