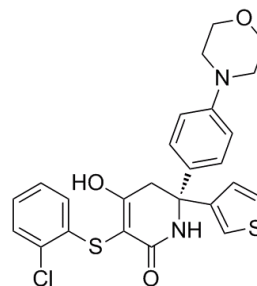


**Product Name** : (R)-GNE-140  
**Synonyms** : GNE-140; GNE 140; GNE140  
**Cat No.** : M13127  
**CAS Number** : 2003234-63-5  
**Molecular Formula** : C<sub>25</sub>H<sub>23</sub>ClN<sub>2</sub>O<sub>3</sub>S<sub>2</sub>  
**Formula Weight** : 499.04  
**Chemical Name** : —



**Description** : (R)-GNE-140 (GNE-140) is a novel potent, selective lactate dehydrogenase (LDH) inhibitor with IC<sub>50</sub> of 3, 5, and 5 nM for LDHA, LDHB, and LDHC, respectively; displays no inhibition on malate MDH-1, MDH-2 (IC<sub>50</sub>>10 μM for both enzymes), and no appreciable inhibition against a panel of 301 kinases (<50% inhibition at 1 μM); perturbs glycolysis and inhibits proliferation in MIA PaCa-2 cells (IC<sub>50</sub>=0.43 μM), decreases glucose uptake (IC<sub>50</sub>=0.47 μM); pancreatic cell lines that utilize oxidative OXPHOS rather than glycolysis are inherently resistant to GNE-140, which can be resensitized to GNE-140 with the OXPHOS inhibitor phenformin. Pancreatic Cancer Phase 1 Clinical

**Pathway** : Metabolic Enzyme/Protease

**Target** : LDH

**Receptor** : LDH

**Solubility** : 10 mM in DMSO

**SMILES** : C1COCCN1C2=CC=C(C=C2)C3(CC(=C(C(=O)N3)SC4=CC=CC=C4Cl)O)C5=CSC=C5

**Storage** : (-20°C)

**Stability** : ≥ 2 years

**Reference** :

1. Boudreau A, et al. Nat Chem Biol. 2016 Oct; 12(10):779-86.