

Product Name : LGD-2226

Synonyms : LGD2226

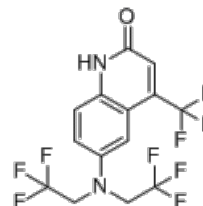
Cat No. : M14078

CAS Number : 328947-93-9

Molecular Formula : C₁₄H₉F₉N₂O

Formula Weight : 392.23

Chemical Name : 6-(bis-(2,2,2-trifluoroethyl)amino)-4-trifluoromethyl-1H-quinolin-2-one



Description : LGD-2226 (LGD2226) is an orally active, selective androgen receptor modulator (SARM) with binding K_i of 1 nM, >1000-fold selectivity over GR, PR, MR and ER; LGD2226 is fully active in cell-based models of bone and muscle, exhibits anabolic activity on muscle and bone with reduced impact on prostate growth in rodent models; LGD2226 is also efficacious in a sex-behavior model in male rats measuring mounts, intromissions, ejaculations, and copulation efficiency. Osteoporosis Discontinued

Pathway : Endocrinology/Hormones

Target : Androgen Receptor (AR)

Receptor : Androgen Receptor (AR)

Solubility : —

SMILES : O=C1NC2=C(C=C(N(CC(F)(F)F)CC(F)(F)F)C=C2)C(C(F)(F)F)=C1

Storage : (-20°C)

Stability : ≥ 2 years

Reference :

1. Miner JN, et al. Endocrinology. 2007 Jan;148(1):363-73. | 2. van Oeveren A, et al. J Med Chem. 2006 Oct 19;49(21):6143-6.